

F45



F 45



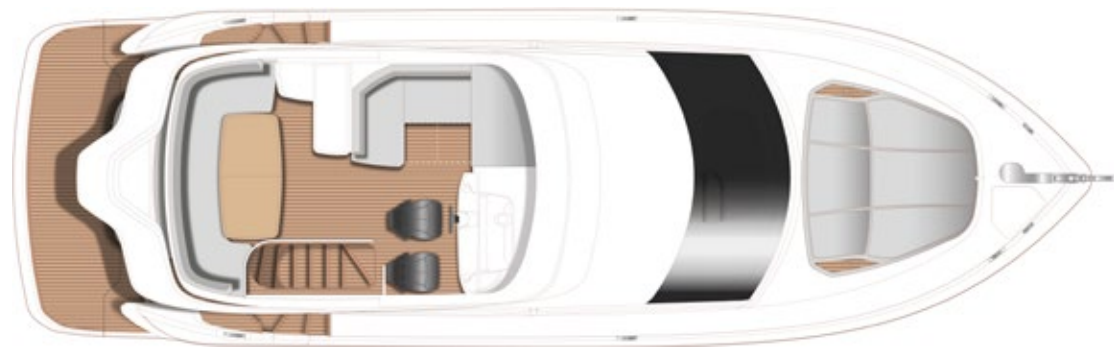
The exceptional new F45 flybridge delivers unparalleled space, quality and flexibility for the ultimate on-water experience. Her extended flybridge includes a seating area with teak dining table and forward L-shaped seats that convert to a sunpad when required. At the touch of a button, her unique, electrically-sliding transom seating arrangement extends the length of the cockpit area to deliver unrivalled main deck space for a 45ft yacht. Below deck, a full beam owner's cabin complemented by a forward ensuite cabin await and exceed your accommodation expectations belying her sleek proportions. Powered by Volvo IPS 600's and reaching a top speed of 31 knots, the F45 is a breathtakingly beautiful craft. Together with its elegant full-length hull windows, beautifully resolved surfacing, and unusual design detail, the F45 establishes itself as the pinnacle of small flybridge yachts.

O flybridge excepcional e novo do F45 oferece incomparável espaço, qualidade e flexibilidade para uma experiência excelente no mar. O flybridge estendido inclui uma área de estar com mesa de jantar de teca e assentos em forma de L que podem ser convertidos em solário quando necessário. Com o toque de um botão, um arranjo de assento no espelho de popa eletricamente deslizante estende o comprimento da área do cockpit para gerar um inigualável espaço do convés principal para um iate de 45 pés. Abaixo do convés, cabine do proprietário ocupa toda a largura do iate, e é complementada por uma cabine de proa privativa tipo suite e excede as suas expectativas de alojamento, apesar de suas proporções elegantes. Acionado por uma motor Volvo IPS 600 e atingindo uma velocidade máxima de 31 nós, o F45 é um iate poderoso e incrivelmente bonito. Juntamente com suas janelas elegantes de casco amplas, com lindo acabamento e detalhes de design incomuns, o F45 representa a vanguarda dos iates de flybridge pequeno.

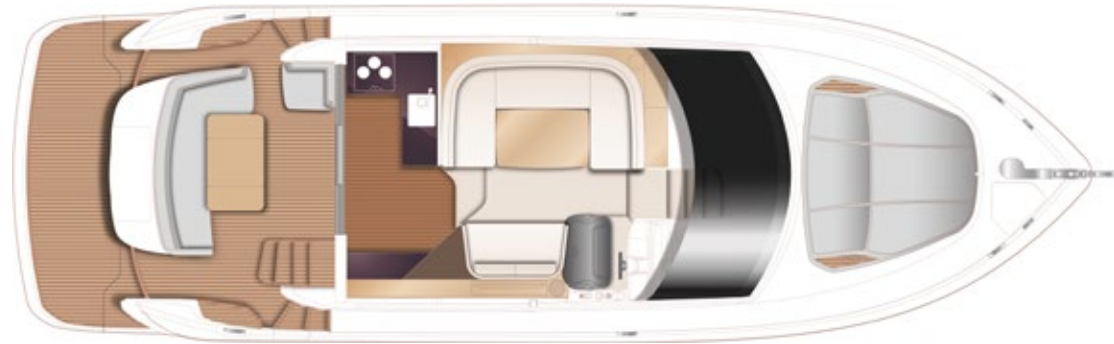
El nuevo y excepcional F45 con flybridge ofrece un espacio, una calidad y una flexibilidad sin igual para disfrutar de la mejor experiencia en el agua. Su amplio flybridge incluye un área de asientos con mesa de comedor de teca, y asientos delanteros en forma de L que se convierten en solórium acolchado cuando es necesario. Con sólo tocar un botón, su exclusiva disposición de asientos en el espejo de popa, que se deslizan eléctricamente, amplía la extensión del área de la bañera, para ofrecer un espacio de cubierta principal inigualable para un yate de 45 pies. Debajo de la cubierta, le aguarda un camarote principal que ocupa toda la manga, complementado con un camarote de proa con baño en suite, que supera sus expectativas de alojamiento y desafía las elegantes proporciones de este yate. Accionado por Volvo IPS 600, y alcanzando una velocidad máxima de 31 nudos, el F45 es una embarcación de una belleza impresionante. Junto con sus elegantes ventanales de casco completo, su superficie bellamente resuelta, y sus inusuales detalles de diseño, el F45 se establece como la cúspide de los yates pequeños con flybridge.

卓越的全新F45飞桥为终极水上体验提供无与伦比的空间、品质和灵活性。更宽大的飞桥设有一个带柚木餐桌的休息区和朝前的L形座位，并且可在需要时转换为日光浴垫。只需轻按一个按钮，她独特的电动滑动舱尾座位就可以延长后甲板区的长度，为45英尺长的游艇提供无与伦比的主甲板空间。她外观修长，甲板下方还有沿着整个船宽设计的主卧舱与船首客舱套房构成的巧妙住宿格局等着您，必定让您喜出望外。F45游艇由Volvo IPS 600引擎驱动，最高时速达31节，是一艘令人惊叹的迷人游艇。凭借其优雅的全长船体窗户，精美的表面处理和不同寻常的设计细节，F45成为小型飞桥游艇的巅峰之作。

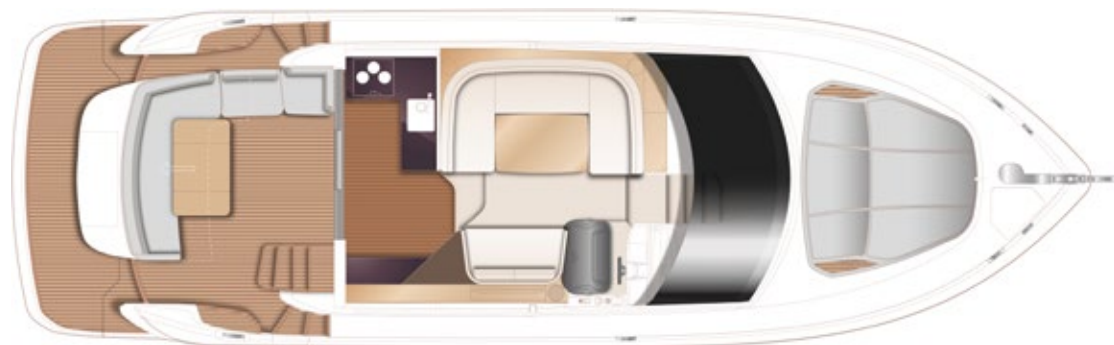
Die herausragende neue F45 Flybridge begeistert mit einem unvergleichlichen Raumangebot sowie höchster Qualität und Flexibilität für das ultimative Erlebnis auf dem Wasser. Die verlängerte Flybridge umfasst einen Sitzbereich mit Esstisch aus Teakholz sowie nach vorne ausgerichtete L-förmige Sitze, die sich nach Wunsch in einen Sonnenbereich umbauen lassen. Auf Knopfdruck verlängert der elektrisch schiebbare heckseitige Sitzbereich das Cockpit und bietet somit ein für eine 45 Fuß lange Yacht außergewöhnlich großes Hauptdeck. Ungeachtet ihrer schlanken Proportionen verbergen sich unter Deck eine sich über die gesamte Breite erstreckende Eignerkabine sowie eine Vorderkabine mit jeweils eigenem Badezimmer. Die F45 ist eine atemberaubend schöne Yacht, angetrieben von Volvo IPS 600 mit einer Spitzengeschwindigkeit von 31 Knoten. Mit den eleganten deckenhohen Rumpffestern, wunderschön gelöster Oberflächengestaltung und ungewöhnlichen Design-Akzenten etabliert sich die F45 als Spitzenreiter der kleinen Flybridge-Yachten.



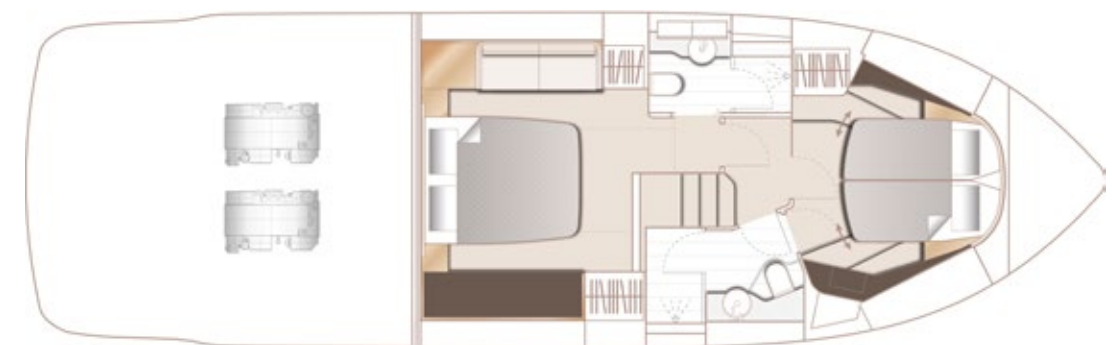
MAIN DECK



MAIN DECK



MAIN DECK (OPTIONAL)



LOWER DECK

PRINCIPAL DIMENSIONS

Length overall (inc pulpit)	46ft 5in (14.15m)
Length overall (excl pulpit)	44ft 9in (13.64m)
Beam	13ft 11in (4.25m)
Draft	3ft 7in (1.09m)
Displacement approx	16,779kg (36,991lbs)
Fuel capacity	286 gal/343 US gal/1,300l
Water capacity (incl calorifier)	100 gal/120 US gal/455l

ENGINES

Twin Volvo IPS 600 (2 x 435mhp)	Speed range: 29-31 knots*
---------------------------------	---------------------------

DECK FITTINGS

- Teak-laid transom platform, cockpit deck, flybridge stairway and steps to side decks
- Self-stowing 20kg/44lbs Delta anchor with 40m of chain
- Reversible electric anchor winch with foredeck, helm position and flybridge controls
- Stainless steel cleats, fairleads and handrails
- Foredeck sunbathing area
- Storage lockers for fenders and ropes
- LED deck level lighting

COCKPIT

- L-shaped seating with sliding mechanism and teak folding table
- Twin transom gates leading to bathing platform (with optional electro-hydraulic raise/lower mechanism and dinghy chock system)
- Transom bathing platform with foldaway swimming ladder and hot and cold shower
- Lockable gas strut assisted hatch to engine room/lazarette
- Liferaft storage locker
- Locker housing 220/240v shore support inlet
- Cockpit cover

FLYBRIDGE

- Dual station instrumentation, controls and alarm system including VHF/RT, speed and distance log, echo sounder with alarm and autopilot
- Large U-shaped seating area with folding teak table
- L-shaped seat (converts to a sunbed)
- Twin helm seats with fore and aft adjustment for helmsman
- Optional wetbar with barbecue, sink and refrigerated top loading coolbox
- Waterproof speakers linked to saloon stereo
- Console and seat covers

LOWER HELM POSITION

- Double helm seat with fore and aft adjustment
- Electric opening window
- Full engine instrumentation including fuel gauges, exhaust temperature and engine warning system and rudder position indicator
- Navigation system including VHF/RT, speed and distance log, echo sounder with alarm, autopilot and high speed magnetic compass
- Controls for joystick, bow thruster, windscreen wipers, bilge pump and trim tabs with indicators
- 24v and 240v control panel
- Red night lighting

DECK SALOON

- Triple opening stainless steel framed sliding doors to aft cockpit
- U-shaped sofa with dining table
- Two-seater sofa
- Naim audio system

GALLEY

- 3-zone hob
- Combination microwave/convection oven with grill
- Stainless steel sink with mixer tap
- Twin refrigerator with one freezer compartment
- Storage cupboards, drawers and lockers

ACCOMMODATION

- All cabins and bathrooms feature opening portholes
- All cabins feature 220/240v power points
- All mattresses pocket sprung
- All bathrooms feature full shower stalls, electric freshwater toilets, extractor fan and 240v shaver points

OWNER'S STATEROOM

- Large double bed with drawers below
- Wardrobe with shelves
- Dressing table
- Sofa
- Storage lockers and drawers
- En suite bathroom

FORWARD GUEST CABIN

- Large double bed with drawers below (option of scissor berths)
- Wardrobe with shelves
- Vanity unit
- Storage lockers and drawers
- Deck hatch
- En suite bathroom with day access

INTERIOR FINISH

- Furniture in Rovere Oak with satin or high gloss finish. Walnut or Alba Oak available as an option
- Solid surface worktops and tiled floors in all guest bathrooms
- Solid surface worktop and timber-laid floor in galley
- Choice of high quality carpet and upholstery fabric from extensive range
- Blinds or sunscreens to all windows and portholes

POWER AND DRIVE SYSTEMS

- Twin Volvo IPS-435 with joystick control
- Power-assisted electro-hydraulic steering system with hydraulic back-up
- Electronic engine controls
- Volvo active corrosion protection system
- Engine room extractor fan with electronic time delay

ELECTRICAL SYSTEMS

- 24 Volt:
 - 4 x heavy duty batteries for engine starting
 - 4 x heavy duty auxiliary batteries
 - 60 amp battery charger charges both banks of batteries via an automatic switch charging system
 - Remote battery master switches with control switch at main panel
 - LED lighting throughout

220/240 Volt:

- Shore support inlet
- Earth leakage safety trip, polarity check system, circuit breakers on all circuits
- Power points in all areas

FUEL SYSTEM

- Twin fuel tanks (in NS8 marine grade alloy) with interconnection system giving 286 gal/343 US gal/1,300l capacity
- Fuel fillers on port and starboard side decks
- High capacity duplex fuel filters/water traps with audible and visual fuel contamination warning system
- Remote fuel isolation controls in cockpit locker

WATER SYSTEM

- 93 gal/112 US gal/423l plus 7 gal/8 US gal/32l hot water calorifier, heated by engine and 240v immersion heater
- Water level gauge
- Deck filler
- Electric freshwater WC system with 33 gal/40 US gal/150l holding tank

FIRE EXTINGUISHERS

- Automatic/manual override fire extinguishers in engine room with warning system at both helm positions
- Hand-operated fire extinguishers in all cabins, galley and lower helm (4)

BILGE PUMPS

- Automatic electric bilge pumps (4)
- High capacity manual bilge pump with valve system and suction points in same areas

OTHER ITEMS SUPPLIED AS STANDARD

- Quilted bedspreads supplied to all cabins
- Ensign staff
- Fenders (4) and wraps (4)
- First aid kit
- Set of manuals
- Tool kit



www.boatingfreedom.com | freedom@boatingfreedom.com

Vancouver 604.609.0985 | Sidney 250.940.9060 | 中文或粤语 604.235.1000