


F55





F 55

From the moment you step aboard her teak decking, luxurious space is a constant companion. Her 17.80m² flybridge enjoys a convertible sunbed, twin helm seats, a wetbar and ergonomic dining areas. Vast panoramic saloon windows and signature wrap around front screens offer uninterrupted vistas from the main deck whilst expansive hull windows generously flood her accommodation areas with light. This oasis of calm can then be propelled to a top speed approaching 33 knots, and all with nimble composure. Magnificent performance and uncompromising comfort in equal measure.

A partir do momento em que você entra a bordo, o espaço luxuoso passa a ser um companheiro constante. Um perfil externo eternamente elegante foi combinado com soluções engenhosas de layout interno para criar um dos iates flybridge mais nicamente avançados e com o melhor espaço. Abaixo, as janelas expansivas do casco criam uma sensação de movimento constante e inundam amplamente o interior com luz. Este oásis de calma pode então atingir uma velocidade máxima aproximada de 33 nós, tudo com uma ágil serenidade. Refinamento e desempenho magníficos, em igual medida.

Desde el momento en que usted sube a bordo de su cubierta de teca, el espacio de lujo es un compañero constante. Su flybridge de 17.80 m² cuenta con una tumbona convertible, dos asientos de timonel, un bar con fregadero y áreas ergonómicas de comedor. Las enormes ventanas panorámicas del salón y nuestros característicos parabrisas envolventes, ofrecen vistas ininterrumpidas desde la cubierta principal, mientras que las amplias ventanas del casco inundan generosamente las zonas de alojamiento con luz. Este oasis de calma puede entonces ser propulsado a una velocidad máxima que se acerca a los 33 nudos, y todo ello con ógil compostura. Rendimiento magnífico y comodidad sin límites en la misma medida.

从您步上游艇的柚木甲板的那一刻起，宽敞的空间始终伴随您。她的飞桥面积达17.80平方米，拥有一个可转换的日光浴床、双舵座位、水吧及符合人体工学的就餐区。宽敞的全景客厅窗户和环绕的标志性前遮阳帘在主甲板上展现了无遮蔽的远景，而宽大的船体窗户则让充足的光线倾泻在她的住宿区域。这座宁静绿洲最快航度可达 33 节。出色性能与非凡舒适兼备。

Vom ersten Moment an Bord werden die Teakdecks und luxuriösen Räumlichkeiten Ihren Aufenthalt auf dieser Yacht begleiten. Die 17,80 m² große Flybridge begeistert mit umbaubarer Sonnenliege, zwei Sitzen am Steuerstand, einer Bar und ergonomisch ausgelegten Essbereichen. Durch die imposanten Salonfenster und die charakteristischen Rundum-Frontscheiben erstreckt sich vom Hauptdeck aus eine ungestörte Aussicht zum Horizont, und großzügige Fenster im Rumpf durchfluten die Kabinen mit Tageslicht. Diese Oase der Ruhe lässt sich überdies entspannt auf eine Höchstgeschwindigkeit von 33 Knoten beschleunigen – und besticht gleichermaßen durch herausragende Performance und kompromisslosen Komfort.







The F55 interior has an architectural presence and elegantly uses contrasting surfaces whilst retaining the elegance that Princess interiors are renowned for. Her spacious saloon features a U-shaped sofa opposite a twin sofa with the option of a folding leaf dining or coffee table in between. Below, both the master stateroom and forward cabin feature large double beds whilst the starboard guest cabin with two single beds can also be converted in to a double. There is also the option for a single bed aft cabin. All are en suite of course.

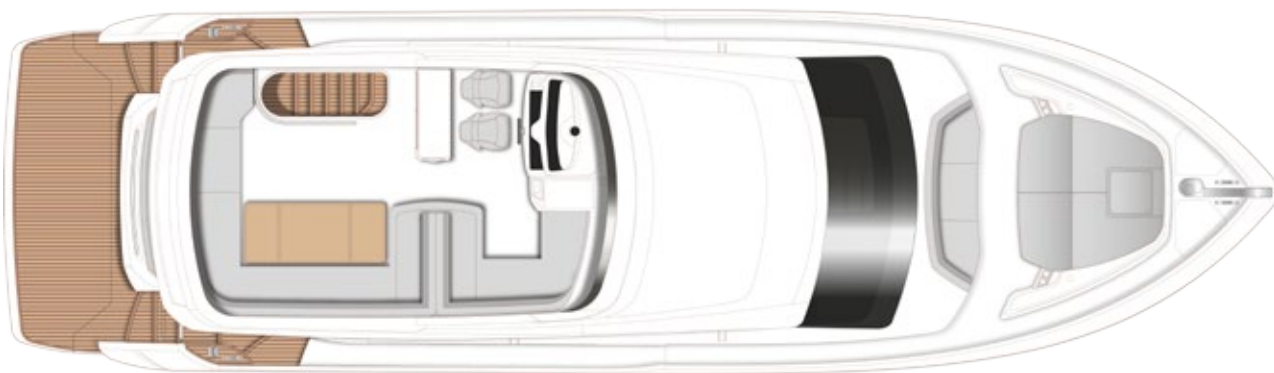
O interior do Princess 55 tem uma presença arquitetônica e usa de forma elegante superfícies que contrastantes retendo a elegância dos renomados interiores da Princess. O seu espaçoso salão dispõe de um sofá em forma de U, em frente a um sofá duplo com a opção de mesa de jantar dobrável ou mesa de café no meio. Abaixo, a sala do capitão e a cabine de proa apresentam camas de casal grandes e a cabine de convidados a boreste tem duas camas de solteiro que podem também ser convertidas em camas de casal. Há também a opção de cabine de popa com uma cama de solteiro. Todas tipo suite, naturalmente.

El interior del F55 tiene una gran presencia arquitectónica, y utiliza con elegancia superficies contrastantes al mismo tiempo que conserva la elegancia por la que son famosos los interiores del Princess. Su espacioso salón cuenta con un sofá en forma de U frente a un sofá doble, con la opción de una mesa de comedor plegable, o una mesa de centro, en el medio. Abajo, tanto el camarote principal como el camarote de proa disponen de grandes camas dobles, mientras que el camarote de invitados de estribor cuenta con dos camas individuales, que se pueden convertir en una cama doble. También existe la opción de un camarote de popa con cama individual. Todos en suite, por supuesto.

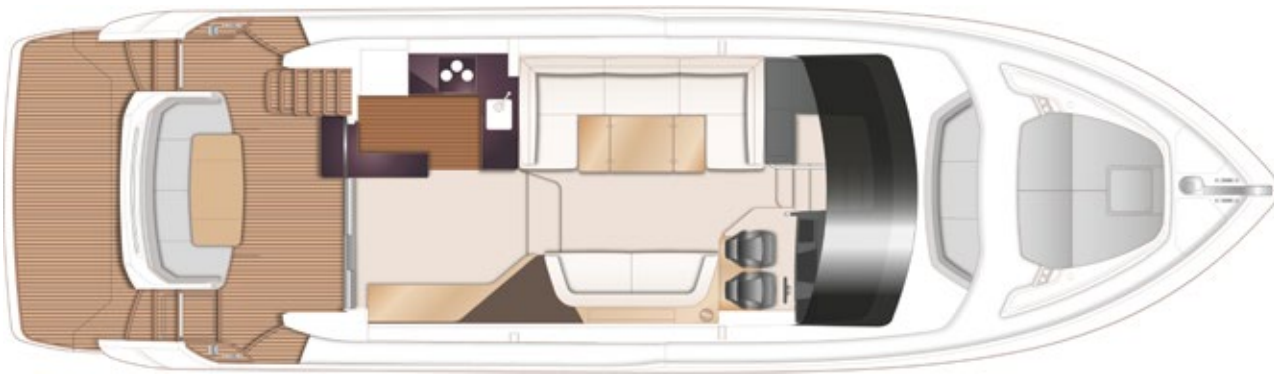
F55的内饰具有建筑风格，采用优雅、对比鲜明的表面，同时亦保留了Princess游艇内饰久负盛名的优雅风范。她宽敞的客厅中在双人沙发对面设有一个U形沙发，中间配可折叠餐桌或咖啡桌。甲板下的主人包舱和船首客舱均配有大型双人床，而配有两张单人床的右舷客舱也可转换为双人床。船尾舱还可以设一张单人床。当然，全部为套房。

Die Innenräume der F55 bestechen durch architektonische Strahlkraft und geschmackvoll kontrastierende Oberflächen, die gleichzeitig die Eleganz wahren, für die Princess so bekannt und geschätzt ist. Der großzügige Salon lädt mit einem U-förmigen Sofa gegenüber eines Zweisitzers und der Option eines klappbaren Ess- oder Couchtisches dazwischen zum Verweilen ein. Unter Deck warten die Eignerkabine und Vorderkabine mit großen Doppelbetten auf Gäste. Die Kabine an Steuerbord ist mit zwei Einzelbetten ausgestattet, die jedoch auch in ein Doppelbett umgebaut werden können. Darüber hinaus bietet diese Yacht die Option einer Einzelkabine achtern. Alle selbstverständlich mit eigenem Badezimmer.

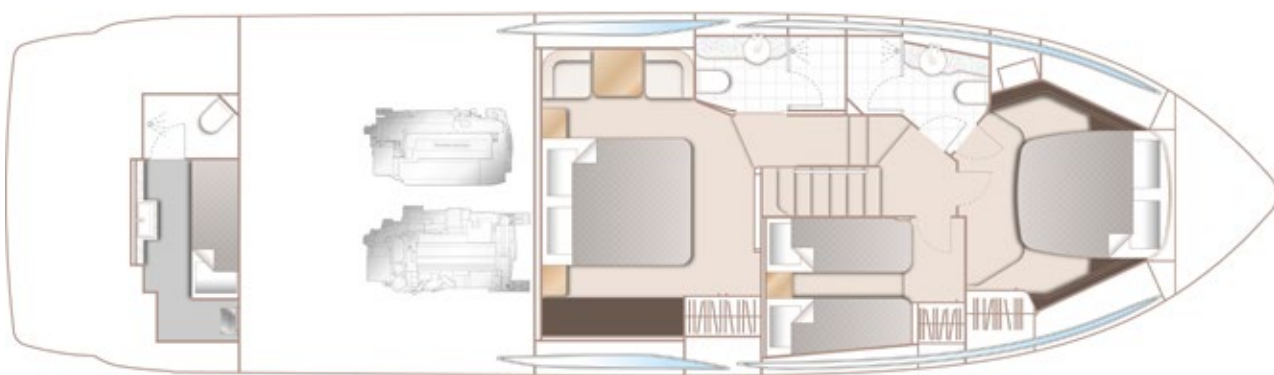




FLYBRIDGE



MAIN DECK



LOWER DECK

PRINCIPAL DIMENSIONS

Length overall (Incl. pulpit)	57ft 9in (17.6m)
Length overall (excl. pulpit)	56ft 7in (17.24m)
Beam	16ft 0in (4.87m)
Draft approx	4ft 10in (1.46m)
Displacement approx	24,600kg (54,234lbs)*
Fuel capacity	605 gal/726 US gal/2,750l
Water capacity (Incl. calorifier)	134 gal/161 US gal/608l

DECK FITTINGS

- Teak-laid transom platform, cockpit deck, flybridge stairway and steps to side decks
- Self-stowing 25kg/55lb Delta anchor with 40m of chain
- Reversible electric anchor winch with foredeck, helm position and flybridge controls
- Stainless steel cleats, fairleads and handrails
- Freshwater deck/anchor wash
- Foredeck seating and sunbathing area
- Storage lockers for fenders and ropes
- LED deck level lighting

COCKPIT

- U-shaped seating with folding teak table
- Twin transom gates leading to bathing platform (with optional electro-hydraulic raise/lower mechanism and dinghy chock system)
- Transom bathing platform with foldaway swimming ladder and hot and cold shower
- Lockable gas strut assisted hatches to engine room, lazarette/optional crew cabin
- Locker housing 220/240v shore support inlet
- Cockpit cover

FLYBRIDGE

- Dual station instrumentation, controls and alarm system including VHF/RT, speed and distance log, echo sounder with alarm and autopilot
- Large U-shaped seating area with folding teak table
- L-shaped seat (converts to a sunbed)
- Twin helm seats with fore and aft adjustment for helmsman
- Wetbar with sink, storage and optional barbecue
- Refrigerated top loading coolbox
- Radio/MP3 with waterproof speakers
- Liferaft storage
- Console and seat covers

LOWER HELM POSITION

- Twin helm seats with fore and aft adjustment for helmsman
- Electric opening window
- Full engine instrumentation including fuel gauges, exhaust temperature and engine warning system and rudder position indicator
- Navigation system including VHF/RT, speed and distance log, echo sounder with alarm, autopilot and high speed magnetic compass

- Controls for joystick, bow thruster, windscreen wipers, bilge pump and trim tabs with indicators
- 24v and 240v control panel
- Red night lighting

DECK SALOON

- Stainless steel framed sliding doors to aft cockpit with integrated opening window aft of galley
- U-shaped sofa with folding dining table or coffee table
- Two-seater sofa
- 49" UHD LED TV with electric raise/lower mechanism
- Stereo radio/DVD/MP3 player
- Sideboard unit with bottle and glass storage and refrigerator
- Crockery storage drawer

GALLEY

- 4-zone ceramic hob
- Hob extractor
- Combination microwave/convection oven with grill
- Stainless steel sink with mixer tap
- Full-height fridge/freezer
- Storage cupboards, drawers and lockers

ACCOMMODATION

- All cabins and bathrooms feature opening portholes
- All cabins feature 220/240v power points
- All mattresses pocket sprung (excluding crew)
- All bathrooms feature full shower stalls, electric freshwater toilets, extractor fan and 240v shaver points

OWNER'S STATEROOM

- Large double bed with drawers below
- Wardrobe with shelves
- Dressing table
- Radio/MP3 player
- Storage lockers and drawers
- En suite bathroom

FORWARD GUEST CABIN

- Large double bed with drawers below
- Wardrobe with shelves
- Vanity unit
- Storage lockers
- Deck hatch
- En suite bathroom with day access

ENGINES

Twin Volvo D13-800 (2 x 800hp)	Speed range: 30-32 knots*
--------------------------------	---------------------------

STARBOARD GUEST CABIN

- Two single beds with drawers below (with option of sliding berths)
- Wardrobe with shelves
- Storage lockers and drawers

OPTIONAL AFT CABIN

- Single bed with storage below
- Wardrobe with shelf
- En suite bathroom with stall shower

INTERIOR FINISH

- Furniture in Rovere Oak with satin or high gloss finish. Walnut or Alba Oak available as an option
- Solid surface worktops and tiled floors in all guest bathrooms
- Solid surface worktop and timber-laid floor in galley
- Choice of high quality carpet and upholstery fabric from extensive range
- Blinds or sunscreens to all windows and portholes
- Optional crew cabin fitted with non slip safety flooring

POWER AND DRIVE SYSTEMS

- 4-bladed propellers in nickel aluminium bronze
- Bow thruster (130kgf/287lbf)
- Power-assisted electro-hydraulic steering system with hydraulic back-up
- Electronic engine and gear shift controls
- Electronic engine controls
- Dripless shaft seals
- Engine room extractor fan with electronic time delay

ELECTRICAL SYSTEMS

- **24 Volt:**
 - 4 x heavy duty batteries for engine starting
 - 4 x heavy duty auxiliary batteries
 - 60 amp battery charger charges both banks of batteries via an automatic switch charging system
 - Remote battery master switches with control switch at main panel
 - LED lighting throughout

220/240 Volt:

- 9.5kW diesel generator in own sound shield with water cooled specially silenced exhaust
- 50 amp shore support inlet
- Earth leakage safety trip, polarity check system, circuit breakers on all circuits
- Power points in all areas

FUEL SYSTEM

- Twin fuel tanks (in NS8 marine grade alloy) with interconnection system giving 605 gal/726 US gal/2,750l capacity
- Fuel fillers on port and starboard side decks
- High capacity duplex fuel filters/water traps with audible and visual fuel contamination warning system
- Remote fuel isolation controls in cockpit locker

WATER SYSTEM

- 118 gal/141 US gal/535l plus 16 gal/19 US gal/73l hot water calorifier, heated by engines and 240v immersion heater
- Water level gauge
- Deck filler
- Electric freshwater WC system with 69 gal/83 US gal/315l holding tank

FIRE EXTINGUISHERS

- Automatic/manual override fire extinguishers in engine room with warning system at both helm positions
- Hand-operated fire extinguishers in all cabins, galley and lower helm (5)

BILGE PUMPS

- Automatic electric bilge pumps (5)
- High capacity manual bilge pump with valve system and suction points in same areas

OTHER ITEMS SUPPLIED AS STANDARD

- Quilted bedspreads supplied to all cabins (except optional crew)
- Ensign staff
- Fenders (6) and wraps (4)
- First aid kit
- Set of manuals
- Tool kit



www.boatingfreedom.com | freedom@boatingfreedom.com

Vancouver 604.609.0985 | Sidney 250.940.9060 | 中文或粤语 604.235.1000