

S
CLASS





EXPERIENCE THE
EXCEPTIONAL

Your yacht is an extension of yourself. A statement of your lifestyle. She needs to deliver unforgettable experiences for you, your family and friends. Every Princess yacht is designed with our forward-thinking mentality and crafted with meticulous attention to detail. So whether you're dashing across the water or moored in your favourite bay, you will recognise the difference our design and details make, inside and out.

Experience the exceptional.



CRAFTED IN PLYMOUTH

Perched on the edge of the English Channel lies the city of Plymouth, where we established our home in 1965. Today Princess shipyards cover an area of over 1.1 million square feet, an area rich in British maritime heritage. In fact, South Yard, where our X Class Super Flybridge yachts are constructed, is a former naval yard dating back to the 17th century. From the outset, our goal has been to meticulously sculpt our yachts around our owners' enjoyment of them. Such dedication and attention to detail resonates deeply with our Plymouth craftspeople.

Over 3,000 people, each possessing a mastery of their skill, fastidiously realise this vision in our shipyards. Through a culture of innovation, our yachts are not only some of the most technically-advanced in the world but also the most beautifully realised.



1965

Our story has humble beginnings. In 1965 David King and two friends fitted out their first boat in an old fertiliser store in Plymouth, England. They named her 'Project 31'. Originally destined for charter, the first Project 31 was purchased by a keen boater and two more were built shortly afterwards, marking the beginning of what is today one of the world's leading shipyards. In fact over 130 Project 31 yachts were produced and sold between 1966 and 1969.



TODAY

Over 17,000 boats later, the S62 and S66 are the very latest additions to our S Class range. Delivering captivating performance and luxurious beauty, they are proud symbols of our experience and expertise - at the zenith of luxury yacht manufacturing. Finished to high specifications throughout, the new S62 and S66 are everything we've learned, distilled into the finest on water experience.





S CLASS

Cool and captivating. Balanced. Distinctively luxurious and spaciousness throughout, the extensive cockpits, garages and aft sunpads entice you to enjoy watersports and the great open air. A sports experience with generous interior accommodation for entertaining, our S Class craft are a haven of relaxation, and exhilaration is on tap, for when you need it.



S 78



Distinctively cool whilst propelling you to an exhilarating 39 knots, the S78 is the flagship of the Princess S Class. Her sportbridge inspires relaxation with a range of exclusive furnishings to choose from and seating areas that convert into sun loungers. Unique central access from her hydraulic bathing platform to the cockpit passes between twin sunpads whilst her foredeck features innovative seating with sunpads which can be converted to create additional aft facing seats. The perfect ambience is ensured across her sportbridge, saloon, cockpit and master cabin, where the world class Naim Audio sound system comes installed as standard. Refined and captivating, she's more than everything you would expect from the largest Princess S Class.





Experience traditional craftsmanship reinvented throughout her integrated interior. Ambient lighting plays a supporting role behind furniture, feature panels and through flooring. A cavernous main deck saloon seamlessly connects you to the world outside through full length side windows. Her well-equipped galley surpasses the highest of expectations whilst her dining area delivers a sense of versatile space with an ingenious sliding glass table. Below deck eight guests enjoy four beautifully appointed en suite cabins all bathed in natural light from the S78's elegant and expansive glazing, with a further aft cabin for occasional guests or 2 crew.





EXPERIENCE THE S78

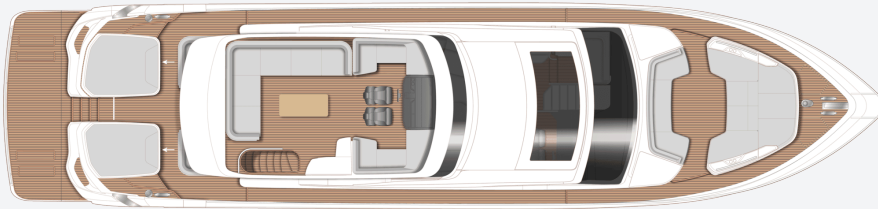


TAKE A VIRTUAL TOUR OF THE S78

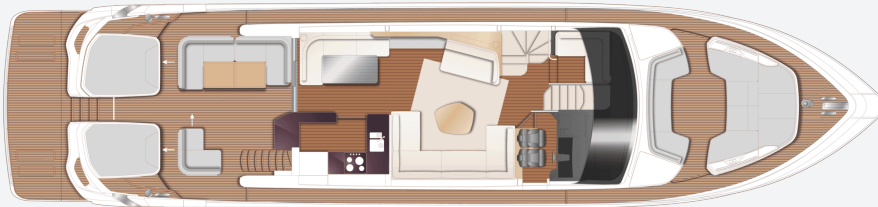




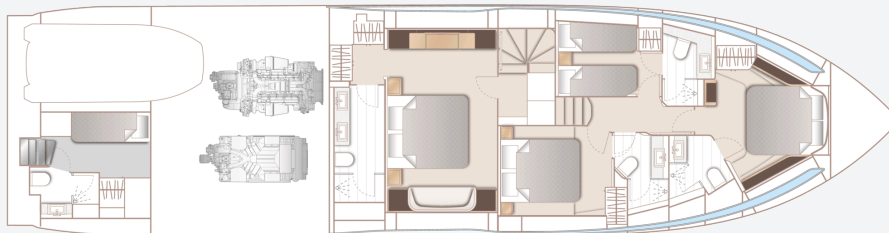
S78
SPECIFICATION



S78 Flybridge



S78 Main Deck



S78 Lower Deck

PRINCIPAL DIMENSIONS

Length overall (incl. pulpit)	80ft 11in (24.66m)
Length overall (excl. pulpit)	78ft 10in (24.03m)
Beam	18ft 11in (5.76m)
Draft	5ft 10in (1.77m)
Displacement approx. (lightship)	49,500 kg / 109,129 lbs
Fuel capacity	1,320 gal / 1,585 US gal / 6,000l
Water capacity (excl. calorifier)	253 gal / 304 US gal / 1,150l

ENGINES

Twin MAN V12-1900 (2 x 1,900mhp)	Speed range: 37-39 knots [†]
---	--

FULL SPECIFICATION

DECK FITTINGS

- Teak-laid transom platform, cockpit deck, sportbridge, sportbridge stairway, side decks and foredeck walkthrough
- Reversible electric anchor winch with foredeck, main helm and sportbridge controls
- Stemhead roller with automatic anchor launch and retrieve
- Self-stowing 50kg/110lbs Delta anchor with 100m of chain
- Twin electric sternline mooring winches
- Deck hatch access to chain locker
- Bow rope stowage locker
- Freshwater deck/anchor wash (with both fore and aft deck outlets)
- Stainless steel bow and stern fairleads
- Stainless steel bow, stern and spring cleats (2 pairs)
- Stainless steel pulpit and guard rails
- Stainless steel coachroof and sportbridge handrails
- Foredeck escape hatch
- Foredeck U-shaped seating area with cushion in

reticulated foam

- Foredeck sunbathing area with cushions in reticulated foam, integrated adjustable headrests and storage (converts to aft facing U-shaped seating area)
- Twin coachroof lockers for storage of fenders, ropes and cushions
- PVC rubbing band with stainless steel insert
- LED deck level lighting
- Full set of IMCO navigation lights
- Riding light
- Twin beam searchlight with dual station remote controls
- Loudhailer
- Stern docking lights
- Twin electric horns
- Fuel and water fillers
- Telephone connection point

COCKPIT AND BATHING PLATFORM

- Self-draining
- Configurable cockpit seating area with three predefined positions including deck mounting

sockets

- Folding teak dining table that converts to a coffee table
- Twin aft sunbeds with lazarette space below
- LED overhead and deck level lighting
- Illuminated crown logo to transom
- JL Audio M6-650X-L system with waterproof speakers (2)
- Stainless steel handrails
- Garage (to take tender up to 4.45m) with electro-hydraulic door and tender launch system with electric winch
- Remote control 3.6m telescopic passarelle with folding handrails
- Watertight pantograph door giving direct access from bathing platform to crew cabin/engine room
- Lockable gas strut assisted hatch to engine room
- Liferaft stowage locker
- Rope storage lockers

- Locker containing remote fuel cocks, manual bilge pump with valve chest and manual controls for automatic fire extinguishers
- Integral stairway to sportbridge with teak step treads
- Central transom gate leading to bathing platform
- Electro-hydraulic raise/lower teak laid bathing platform (550kg SWL)
- Retractable bathing ladder (manual) in side of hydraulic platform
- Transom steps to access stern from bathing platform when in lowered position
- Dinghy chock system
- Foldable carbon fibre hot and cold transom shower with deck mounting socket and stowage bag.
- 220/240v shore support inlet
- Tonneau canvas cover

SPORTBRIDGE

- Twin adjustable helm seats
- Instrument console with dual station controls and LED display incorporating engine instruments, fuel gauges, alarms and rudder position indicator (see Lower Helm Position)

- Power assisted electro-hydraulic steering with adjustable wheel
- Port and starboard forward-facing L-shaped seating (converts to sunbeds)
- Seating and sunbed cushions in reticulated foam
- L-shaped free standing Roda sofas with coffee table
- Free standing Roda pouffe
- Free standing Roda small circular side table
- Wetbar with barbecue, sink, top loading coolbox, waste bin and storage
- Naim Uniti Atom Audio Unit with JL Audio M6-650X-L waterproof speakers (2)
- Clear view hatch to aft cockpit
- Wind deflector screens
- Stainless steel handrails
- LED deck level lighting
- GRP radar arch
- Twin matching whip aerials for VHF R/T and radio
- Console and seat covers
- Optional bimini with/without optional electro hydraulic operation

HELM POSITION

- Twin Nero Black leather upholstered helm seats with S Class quilting and contrast panelling in Chrome Grey
- Fore and aft adjustment for helmsman.
- Instrument console with LED display incorporating engine instruments, fuel gauges, alarms and rudder position indicator
- Dual station instruments and controls at Sportbridge and Lower Helm Positions:
 - power-assisted electro-hydraulic steering
 - adjustable steering wheel
 - high-speed magnetic compass
 - electronic engine controls
 - trim tab controls with indicators
 - bow thruster control
 - electric anchor winch remote control
 - colour radar (with scanner) and GPS/chartplotter (twin displays at Lower Helm)
 - autopilot
 - speed and distance log
 - echo sounder with alarm
 - VHF with DSC R/T with intercom
 - remote control searchlight
 - horn button
- Intercom to sportbridge

- Automatic fog horn with loudhailer
- Chart storage
- Drinks holders
- Toughened glass screen (clear for night vision) with windscreen de-mist system
- Windscreen wipers with freshwater windscreen wash
- Black mesh windscreen covers
- Skylights with reflecto-glass and sliding blinds (option of powered opening roof)
- Bilge pump controls with visual pump running warnings
- 24v and 240v electrical control panel
- Riding light, helm and navigation light control switches
- USB charging point
- LED overhead lighting (24v) and night lighting
- Pantograph helmsman's door to starboard side deck
- Timber flooring

SALOON

- U-shaped sofa
- Coffee table
- Two-seater chaise to port
- L-shaped sofa opposite helm area

- Electric drop window to port
- Sideboard unit with bottle and glass storage
- Refrigerator
- 55" UHD LED TV on rise and fall
- DVD Blu-ray system with Naim audio system paired with speakers (2) and subwoofer
- Electric roller blinds to all side windows
- Dimmable LED overhead and concealed lighting (24v)
- Access stairway to lower accommodation
- Separate access stairway to owner's stateroom
- Timber flooring with inlaid rug

DINING AREA

- L-shaped sofa
- Glass dining table (sliding mechanism allows table to be slid outboard)
- Stainless steel framed sliding door to cockpit with integrated hinging window aft of galley
- Electric roller blinds to all side windows
- Manual Skysol blinds to aft patio door
- Dimmable LED overhead and concealed lighting (24v)
- Timber flooring

GALLEY

- Galley worktop in choice of granite or quartz
- 4-zone induction hob
- Extractor fan
- Combination microwave/convection oven with grill
- Twin-bowl stainless steel sink with mixer tap
- Chopping board
- Full height refrigerator/deep freeze
- Icemaker
- Dishwasher
- Waste bin
- Drawers and storage cupboards
- Manual Skysol blind to aft opening window
- Electric roller blind to starboard window
- Powered sliding divider screen to forward end of galley
- Dimmable LED overhead and task lighting (24v)
- 220/240v outlets (4)
- Timber flooring

ACCOMMODATION

- All cabins and bathrooms feature opening portholes and air conditioning
- All cabins feature 220/240v power points
- All bathrooms feature electric freshwater toilets

and 240v shaver points

OWNER'S STATEROOM LOBBY

- Access stairway to master stateroom
- Linen cupboard under stairway with washer dryer and space for separate washing machine and tumble dryer
- Panoramic window with venetian blind
- LED overhead and concealed lighting (24v)
- Window with manual tension venetian blind
- Fitted carpet

OWNER'S STATEROOM

- Large double bed with drawers below
- Twin bedside tables
- Dressing area with wardrobes and storage
- Built-in safe
- Dressing table with chair
- Mirror
- Sofa with integrated drawer below
- Storage lockers and drawers
- 40" UHD LED TV
- DVD Blu-ray system with Naim audio system paired with speakers (2) and subwoofer
- Panoramic windows including opening portholes

- Electric venetian blinds
- Dimmable LED overhead and concealed lighting (24v)
- Individual berth lights
- 220/240v outlets (2)
- USB charging point
- Fitted carpet

EN-SUITE BATHROOM

- Twin wash basins with solid surface worktop
- Mirror
- Storage lockers
- Shower compartment with automatic pump out
- Extractor fan
- Window with opening porthole
- Manual tension venetian blind
- LED overhead and concealed lighting (24v)
- Bathroom accessories
- Solid surface flooring

FORWARD STATEROOM

- Large double bed with drawers below
- Wardrobe with shelves
- Dressing table with stool
- Mirror
- Storage lockers

- Naim Uniti Atom audio system, paired with Focal speakers (2)
- TV connected to audio system with Bluetooth and multi-zone streaming
- Windows with opening portholes
- Electric venetian blinds
- Deck hatch
- LED overhead and concealed lighting (24v)
- Individual berth lights
- 220/240v outlets (2)
- USB charging point
- Fitted carpet

EN-SUITE BATHROOM

- Wash basin with solid surface worktop
- Mirror
- Storage lockers
- Shower compartment with automatic pump out
- Extractor fan
- Window with opening porthole
- Manual tension venetian blind
- LED overhead and concealed lighting (24v)
- Bathroom accessories
- Solid surface flooring

PORT GUEST CABIN

- Two single beds with drawers below (with option of double bed conversion)
- Bedside table
- Wardrobe with shelves
- Mirror
- Storage lockers
- Window with opening portholes
- Electric venetian blind
- LED overhead and concealed lighting (24v)
- Individual berth lights
- 220/240v outlets (2)
- USB charging point
- Fitted carpet

EN-SUITE BATHROOM

- Wash basin with solid surface worktop
- Mirror
- Storage lockers
- Shower compartment with automatic pump out
- Extractor fan
- Window with opening porthole
- Manual tension venetian blind
- LED overhead and concealed lighting (24v)
- Bathroom accessories
- Solid surface flooring

STARBOARD GUEST CABIN

- Large double bed with drawers below (with option of two single beds which slide to form a double as required)
- Twin bedside tables
- Wardrobe with shelves
- Dressing table with stool
- Mirror
- Storage lockers
- Window with opening portholes
- Electric venetian blind
- LED overhead and concealed lighting (24v)
- Individual berth lights
- 220/240v outlets (2)
- USB charging point
- Fitted carpet

EN-SUITE BATHROOM

- Wash basin with solid surface worktop
- Mirror
- Storage lockers
- Shower compartment with automatic pump out
- Extractor fan
- Window with opening porthole

- Manual tension venetian blind
- LED overhead and concealed lighting (24v)
- Bathroom accessories
- Solid surface flooring
- Day access door from passageway

CREW CABIN

- Access from transom door
- Access to engine room
- Two single bunk beds
- Wardrobe with shelf
- Mirror
- Storage lockers
- Microwave
- Storage unit with solid surface worktop and space for optional fridge
- Opening porthole and manual tension blind
- LED overhead lighting (24v)
- Individual berth lights
- 220/240v outlets (2)
- USB charging point
- Non-slip safety flooring

EN-SUITE BATHROOM

- Wash basin with solid surface worktop
- Mirror

- Storage lockers
- Shower compartment with automatic pump out
- Extractor fan
- LED overhead lighting (24v)
- Bathroom accessories
- Non-slip flooring

POWER AND DRIVE SYSTEMS

- Engine room soundproofed
- High volume air intakes
- Engine room extractor fan with electronic time delay
- Engine exhaust silencers and water-cooled exhausts
- Engine beds integrally moulded with hull for strength and vibration absorption
- Forward and aft engine room bulkheads integrally bonded
- Engines flexibly mounted
- Automatic fire extinguisher with remote override control
- Automatic and manual bilge pumps
- Propeller shafts in Marinemet
- 5-bladed propellers in nickel aluminium bronze
- High speed balanced rudders
- Cathodic protection for sterngear

- Sterngear, engines, fuel tank fillers, etc all electrically bonded
- Engine room lighting
- Engine room access from transom door and from cockpit deck
- Power-assisted electro-hydraulic steering system
- Trim tabs with indicators
- Electronic engine and gear shift controls
- Bow thruster (240kgf/529lbf) with dual-station controls
- Fresh water supply point in engine room
- Dripless self-aligning shaft seals

ELECTRICAL SYSTEMS

24 Volt:

- 4 x heavy-duty batteries for engine starting and windlass operation
- 6 x heavy-duty auxiliary batteries
- Battery link facility with remote control at helm position
- Both battery banks are charged using a voltage sensitive relay that parallels both battery banks when a charging source is present
- 1 x 60-amp 24v battery chargers and 1x combination 3.5kW inverter/100-amp charger

- Remote battery master switches with control switch at main switch panel
- Circuit breakers on all circuits
- 12v voltage dropper for certain navigation and radio circuits

220/240 Volt:

- 22.5kW generator in own sound shield with water-cooled and specially silenced exhaust
- 2 x 63-amp shore support inlet
- Generator/shore support change-over switch
- Polarity check system
- Earth leakage safety trip
- Circuit breakers on all circuits
- Power points (240v) in: owner's stateroom, guest cabins, galley and saloon area
- Shaver points in all bathrooms

FUEL SYSTEM

- Fuel tanks (in NS8 marine grade alloy) with interconnection system giving 1,320 gal/1,585 US gal/6,000l capacity
- Fuel fillers on port and starboard side decks
- High-capacity duplex fuel filters with water traps and change-over valves, water warning sensors connected to warning lights at lower

- helm
- Remote fuel cocks in cockpit locker
- Dual station fuel gauges on helm consoles

WATER SYSTEM

- Water tanks totalling 253 gal/304 US gal/1,150l plus 44 gal/53 US gal/200l hot water calorifier
- Water heated by engines and 240v immersion heater
- Automatic water pump with filter
- Main circuit breaker at switch panel
- Water level gauge
- Deck filler
- Electric freshwater toilet system with 99 gal/119 US gal/450l holding tank, content gauge and low noise electric overboard discharge, with macerator backup system as well as dockside discharge system

FIRE EXTINGUISHERS

- Automatic/manual override fire extinguishers in engine room with warning system at both helm positions and incorporating engine air vent closure system
- Hand operated fire extinguishers (7) in owner's stateroom, forward stateroom, port and

starboard guest cabins, crew cabin, galley and lower helm position

BILGE PUMPS

- Automatic/manual override electric bilge pumps in engine room (2), rudder area and forward accommodation (7 in all)
- High-capacity manual bilge pump with valve system and suction points in same areas
- Electric bilge pumps have controls and warning lights at main helm and warning light with audible alarm at sportbridge helm

OTHER STANDARD EQUIPMENT

- Ensign staff
- Fenders (8)
- Mooring warps (4)
- Boathook
- First-aid kit
- Tool kit
- Owner's manual and engine manual
- Quilted bedspreads supplied to all cabins (except crew cabin)
- Set of towels (8 large, 8 hand)
- Set of crystal glassware (8 settings consisting of tumbler, highball and wine glasses)

- Set of Princess china (8 settings consisting of plate, side plate, bowl, cup and saucer)
- Set of cutlery (8 settings of David Mellor "Paris" cutlery 7 pieces)
- Ship's document case
- Anchor winch back up handle
- Upgraded 48 port POE network switch in place of standard

FINISHES

- Teak-laid decks to transom platform, cockpit deck, side decks, foredeck walk through, steps to sportbridge and sportbridge
- Timber-laid floor to galley, saloon and helm
- Furniture in choice Rovere Oak or Alba Oak in satin lacquer finish as standard. Silver Oak and Walnut in satin or gloss finishes available as an option.
- Tiled floors in all bathroom suites in guest accommodation
- Solid surface wash basin counter tops in all bathroom suites in master and guest accommodation
- Galley worktop in granite/quartz
- Choice of high-quality carpet and upholstery fabric from extensive range

- Blinds or sunscreens to all windows and portholes
- Crew cabin has non-slip safety flooring
- Crew bathroom floor is non-slip with white solid surface countertops

US SPECIFICATION INCLUDES

- 120/240v 60hz electrical system throughout including bespoke US socket arrangement
- Additional outlet & stick vacuum mounted in guest cabin wardrobe
- Araknis 210 series 48 port POE network switch
- Bed linens- fitted & loose sheet, pillowcase (excluding crew cabin)
- Built to ABYC and US Coast Guard recommendations
- Clear bowl for generator fuel/water separator
- Cooktop, 240v/60hz, in place of standard
- Dishwasher, 120v/60hz, in place of standard
- Exhaust clamps in stainless steel as per ABYC standards
- Generator - 27.5 kW / 60 hz Onan in place of standard 22.5 kW / 50 hz
- Laundry - upgraded separate washer and dryer in place of standard
- Microwave & refrigerator in crew area
- Princess Yachts America HID tag
- Propeller hubs drilled and tapped to suit prop puller
- Reticulated foam for all standard exterior seating/sunbed cushions
- Shore support - Dual 120/240v 50 Amp outlets with 75' Hubbell cords
- Shore water inlet
- Spare set of anodes (hull, hydraulic platform, and swim ladder)
- Speed oven, 240v/60hz, in place of standard
- Teak decking to be 8mm thick in place of standard
- Thru hull for later fitting of watermaker
- TV in forward VIP stateroom



S 72



Dynamic extended styling lines synonymous with the Princess S Class define the S72. Equipped with twin MAN V12 engines at 1650 or 1800 horsepower and a resin-infused deep-V hull, she delivers dynamic performance and smooth handling at speeds of up to 36 knots. The cockpit features a unique sociable U-shaped seating area with modular seating, folding teak table and servery unit – the perfect place to entertain, or to sit back, relax, and enjoy the yacht’s exhilarating performance. The cockpit bar connects to the galley unit to create an almost seamless transition from outside to in, with a glass window partition which folds up from the unit below to provide servery access when entertaining.





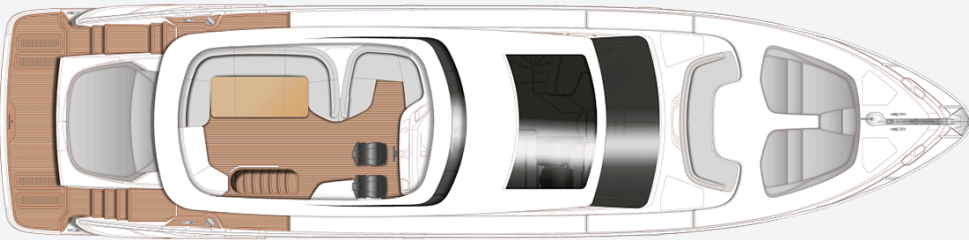
The saloon is designed for sociable living, with a large L-shaped dining area opposite the fully equipped galley, leading to a cavernous main deck saloon with U-shaped sofa, Princess Design Studio coffee table, and an elegant sideboard unit containing a 55" UHD LED TV on rise and fall, plus companion seating with fold out table opposite the main helm.

Below deck, eight guests enjoy four beautifully appointed cabins, three of which are en-suite, all bathed in natural light from elegant hull glazing, with a further twin cabin with en-suite aft for occasional guests or crew. A dedicated staircase leads from the main deck to the full-beam owner's stateroom amidships, via a private lobby area in the lower companion way.

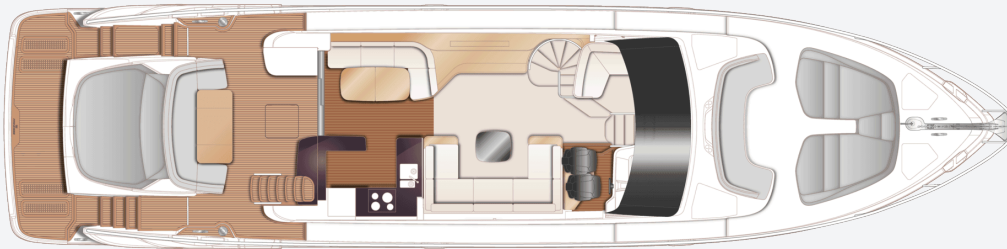




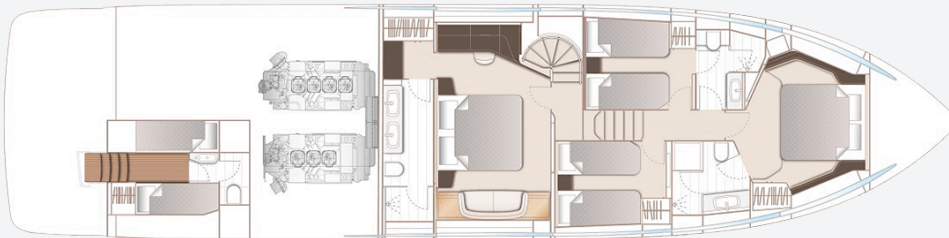
S72
SPECIFICATION



S72 Flybridge



S72 Main Deck



S72 Lower Deck

PRINCIPAL DIMENSIONS

Length overall (incl. pulpit)	75ft 91in (23.09m)
Length overall (excl. pulpit)	73ft 3in (22.30m)
Beam	17ft 11in (5.22m)
Draft	5ft 8in (1.72m)
Displacement approx. (lightship)	52,461 kg (122,271lbs)*
Fuel capacity	990 gal/1,189 US gal/ 4,500l
Water capacity (excl. calorifier)	184 gal/221 US gal/ 836l

ENGINES

Twin MAN V12-1800 (2 x 1,800hp)	Speed range: 34-36 knots†
--	------------------------------

FULL SPECIFICATION

DECK FITTINGS

- Teak laid transom platform, transom steps, cockpit deck, sportbridge and sportbridge stairway areas. Teak laid side deck and foredeck walkthrough areas are optional
- Reversible electric anchor winch with foredeck, main helm and sportbridge controls
- Stem head roller with automatic anchor launch and retrieve
- Self-stowing 50kg/110lbs Delta anchor with 60m of 12mm chain
- Twin electric stern line mooring winches
- Deck hatch access to chain locker
- Bow rope stowage locker
- Freshwater deck/anchor wash
- Stainless steel bow and stern fairleads
- Stainless steel bow, stern and spring cleats (2 pairs)
- Stainless steel pulpit and guard rails
- Stainless steel coachroof and sportbridge handrails
- Foredeck escape hatch
- Foredeck U-shaped seating area

- Foredeck sunbathing area, twin sunbeds with integrated adjustable headrests with aft facing seat conversion. Storage locket between sunbeds with optional cool box
- Twin coachroof lockers for storage of fenders, ropes and covers
- PVC rubbing band with stainless steel insert
- LED deck level lighting integrated into scene selection lighting control
- Illuminated crown logo on transom
- Full set of IMCO navigation lights
- Riding light
- Stern docking lights
- Twin beam searchlight with dual station remote controls
- Loudhailer
- Twin electric horns
- Ensign socket and pole
- Fuel and water fillers
- Holding tank dockside discharge connection

COCKPIT AND BATHING PLATFORM

- Self-draining
- Upholstered U-shaped seating and sunpad. Forward sections movable to reconfigure cockpit
- Folding teak table with drink rings
- Served unit
- LED overhead and deck level lighting integrated into scene selection lighting control
- Stainless steel handrails
- Garage to take tender 3.9m with electro-hydraulic door and tender launch system with electric winch
- Top hinged door to aft crew cabin
- Lockable gas strut assisted hatch to engine room/lazarette
- Liferaft stowage locker
- Rope storage lockers
- Locker containing remote fuel cocks, manual bilge pump with valve chest and manual controls for automatic fire extinguishers (to include gas ram)
- Integral stairway to sportbridge with teak step

- treads
- Cockpit cover
- Twin transom gates leading to bathing platform
- Retractable bathing ladder (manual) in side of hydraulic platform
- Transom steps to access stern from bathing platform when in lowered position
- Hot and cold transom shower
- 220/240v shore support inlet
- Electro-hydraulic raise / lower teak laid bathing platform (450kg SWL)
- Standard teak with Princess logo (small)
- Bathing platform aft rail
- Transom locker with internal rail in garage door

SPORTBRIDGE

- Dual station instruments and controls (see Lower Helm Position) and USB sockets (2) (each comprising 1x USB-A and 1x USB-C)
- Power assisted electro hydraulic steering with adjustable wheel
- Audible and visual alarm for bilge pumps
- Engine-room fire extinguisher warning system
- Twin helm seats with fore and aft adjustment for helmsman
- Port L-shaped seating (converts to sunbed)

- Large U-shaped upholstered seating
- Cup holders between L-shaped and U-shaped seating
- Folding teak table with drink rings
- Wet-bar with barbecue, sink, waste bin and storage
- Storage locker and navigator seat pedestal with integrated cool box
- Naim Uniti Atom audio unit with JL Audio M6-650X-L waterproof speakers (2)
- Clear view hatch to aft cockpit with stainless safety rail with glass balustrade
- Wind deflector screens
- Stainless steel handrails
- LED deck level lighting integrated into scene selection lighting control
- GRP radar arch
- Twin matching whip aerials for VHF R/T and radio
- Console, table and seat covers
- Optional GRP hardtop panel

LOWER HELM POSITION

- Twin leather helm seats with fore and aft adjustment for helmsman's seat
- Instrument console with LED display

- incorporating engine instruments, fuel gauges, alarms and rudder position indicator
- Dual station instruments and controls at Sportbridge and Lower Helm Positions:
 - Power-assisted electro-hydraulic steering
 - Adjustable steering wheel
 - High-speed magnetic compass
 - Electronic engine controls
 - Bow thruster control
 - Electric anchor winch remote control
 - Colour radar (with scanner) and GPS/chartplotter
 - Autopilot
 - Speed and distance log
 - Echo sounder with alarm
 - VHF with DSC R/T with intercom
 - Remote control searchlight
 - Horn button
 - Controls for standard trim tabs
- Bönning system integrated with the following functionalities (displayed on separate dedicated display at helm):
 - Engine instrumentation (including fuel levels and fuel flow)
 - Digital boat alarms
 - Scene selection lighting controls

- AC/DC control and monitoring
- Drinks holders
- Toughened glass screen (clear for night vision) with windscreen demist system
- Windscreen wipers with freshwater windscreen wash
- Black mesh sunscreens
- Bilge pump controls with visual pump running warnings
- 24v and 240v electrical control panel
- Riding light, helm and navigation light control switches
- USB connection point (1x USB-A and 1x USB-C)
- LED overhead lighting (24v) and night lighting integrated into scene selection lighting control
- Pantograph helmsman's door to starboard side deck
- 'V' groove planked timber flooring

SALOON

- U-shaped sofa
- Coffee table
- L-shaped sofa opposite helm area with fold-out companion table and 220/240v outlet
- Sideboard unit with bottle and glass storage
- Refrigerator

- UHD LED TV (55") on rise and fall
- Naim audio system paired with speakers (2) and subwoofer
- Electric drop window to port
- Venetian blinds (in matte black) to all windows
- Dimmable LED overhead and concealed lighting (24v) integrated into scene selection lighting control
- Access stairway to lower accommodation
- Separate access stairway to owner's stateroom
- Fitted carpet

DINING AREA

- L-shaped sofa
- Folding dining table, Solid Surface countertop with timber edge
- Stainless steel framed sliding patio door to cockpit with integrated hinging window aft of galley
- Venetian blinds (in matte black) to windows and manual skysol blind to patio door
- Dimmable LED overhead and concealed lighting (24v) integrated into scene selection lighting control
- USB connection points (1x USB-A and 1x USB-C)

- 'V' groove planked timber flooring

GALLEY

- Solid surface worktop
- Solid surface countertop to cockpit and port servery unit
- Ceramic 4-zone induction hob
- Hob extractor
- Combination microwave/convection oven with grill
- Solid Surface 1.5 bowl sink with mixer tap
- Chopping board
- Full height refrigerator/deep freeze
- Dishwasher
- Icemaker
- Waste bin
- Drawers and storage cupboards
- Venetian blinds (in matte black) to window
- LED overhead and task lighting (24v) integrated into scene selection lighting control
- 220/240v outlets (4)
- 'V' groove plank timber flooring

ACCOMMODATION

- All cabins and bathrooms feature opening portholes and air conditioning

- All cabins feature 220/240v power points
- All bathrooms feature electric freshwater toilets and 240v shaver points

OWNER'S STATEROOM LOBBY

- Access stairway to owner's stateroom
- Panoramic window
- Manual venetian blinds
- A washer/dryer with cupboard above is fitted in the forward passageway in the guest accommodation (a separate washer and dryer may be optionally installed in place of the standard unit)
- LED overhead and concealed lighting (24v) integrated into scene selection lighting control
- Fitted carpet

OWNER'S STATEROOM

- Large double bed with drawers below
- Twin bedside tables
- Dressing area with wardrobes and storage
- Built in safe
- Dressing table with chair
- Mirror
- Sofa
- Storage lockers and drawers

- 55" UHD LED TV
- Naim audio system paired with speakers (2)
- Panoramic windows including opening portholes
- Manual venetian blinds
- Dimmable LED overhead and concealed lighting (24v) integrated into scene selection lighting control
- Individual berth lights
- 220/240v outlets (3)
- USB charging point (3) (each comprising 1x USB-A and 1x USB-C)
- Fitted carpet

EN-SUITE BATHROOM

- Twin washbasins and vanity top in thermoformed Solid Surface
- Mirror
- Storage lockers
- Shower compartment with automatic pump out
- Extractor fan
- Window with opening porthole and manual tension venetian blind
- LED overhead and concealed lighting (24v) integrated into scene selection lighting control
- Bathroom accessories

- Flooring in Solid Surface

FORWARD STATEROOM

- Large double bed with drawers below
- Wardrobe with shelves
- Dressing table
- Mirror
- Storage lockers and drawers
- Window with opening portholes
- Manual venetian blinds
- Deck hatch
- LED overhead and concealed lighting (24v) integrated into scene selection lighting control
- Individual berth lights
- 220/240v outlets (4)
- USB charging point (2) (each comprising 1x USB-A and 1x USB-C)
- Fitted carpet

EN-SUITE BATHROOM

- Washbasin and vanity top in thermoformed Solid Surface
- Mirror
- Storage lockers
- Shower compartment with automatic pump out
- Extractor fan

- Window with opening porthole
- Manual tension Venetian blind
- LED overhead and concealed lighting (24v) integrated into scene selection lighting control
- Bathroom accessories
- Flooring in Solid Surface

PORT GUEST CABIN

- Two single beds with drawers below (with option of double bed conversion)
- Bedside table
- Wardrobe with shelves
- Mirror
- Storage lockers and drawers
- Window with opening portholes
- Manual venetian blinds
- LED overhead and concealed lighting (24v) integrated into scene selection lighting control
- Individual berth lights
- 220/240v outlets (2)
- USB charging points (1x USB-A and 1x USB-C)
- Fitted carpet

EN-SUITE BATHROOM

- Washbasin and vanity top in thermoformed Solid Surface

- Mirror
- Storage lockers
- Shower compartment with automatic pump out
- Extractor fan
- Window with opening porthole
- Manual tension Venetian blind
- LED overhead and concealed lighting (24v) integrated into scene selection lighting control
- Bathroom accessories
- Flooring in Solid Surface
- Day access door from passageway (port side)

STARBOARD GUEST CABIN

- Two single beds with drawers below (with option of double bed conversion)
- Bedside table
- Wardrobe with shelves
- Mirror
- Storage lockers and drawers
- Window with opening portholes
- Manual venetian blinds
- LED overhead and concealed lighting (24v) integrated into scene selection lighting control
- Individual berth lights
- 220/240v outlets (2)
- USB charging points (1x USB-A and 1x

- USB-C)
- Fitted carpet

CREW CABIN

- Top hinge door access from transom
- Two single beds with storage below
- Wardrobe with shelf
- Mirror
- Storage lockers and drawers
- Opening portlight
- LED overhead lighting (24v)
- Individual berth lights
- 220/240v outlets (2)
- USB charging point (2) (each comprising 1x USB-A and 1x USB-C)
- Non-slip safety flooring
- White laminate furniture

CREW BATHROOM

- Washbasin with Carrara white Solid Surface vanity top (gloss finish)
- Mirror
- Storage lockers
- Shower compartment with automatic pump out
- Extractor fan
- LED overhead lighting (24v)

- Bathroom accessories
- Non-slip flooring
- Standard aft lazarette incorporates overhead lighting, access hatch with ladder and storage space via transom top hinged door

POWER AND DRIVE SYSTEMS

- Engine room soundproofed
- High volume air intakes
- Engine room extractor fan with electronic time delay
- Engine exhaust silencers and water-cooled exhausts
- Engine beds integrally moulded with hull for strength and vibration absorption
- Forward and aft engine room bulkheads integrally bonded
- Engines flexibly mounted
- Automatic fire extinguisher with remote override control
- Automatic and manual bilge pumps
- Propeller shafts in Marinemet
- 5-bladed propellers in nickel aluminium bronze
- High speed balanced rudders
- Cathodic protection for sterngear
- Sterngear, engines, fuel tank fillers, etc all

- electrically bonded
- Bow thruster (250kgf/551lbf) with dual-station controls
- Engine room lighting
- Engine room access and ladder
- Power-assisted electro-hydraulic steering system
- Trim tabs with indicators
- Electronic engine and gear shift controls
- Fresh water supply point in engine room
- Dripless self-aligning shaft seals

ELECTRICAL SYSTEMS

24 Volt:

- 4 x heavy duty batteries for engine starting
- 6 x heavy duty auxiliary batteries
- Battery link facility with remote control at helm position
- Both battery banks are charged using a voltage sensitive relay that parallels both battery banks when a charging source is present
- 1 x 80-amp 24v battery charger and 1 x combination 3.0 kW 70-amp inverter charger
- 6-amp battery charger for generator battery
- Remote battery isolator control switches at main switch panel position

- Circuit breakers on all circuits
- 24v to 12v converters for certain navigation and radio circuits
- 24v to 240v/50Hz inverter for saloon A/V, galley fridge and telephone system
- Galvanic isolation system

220/240 Volt:

- 22.5kW generator in own sound shield with water-cooled and specially silenced exhaust
- Automatic fire extinguisher situated by generator
- 63-amp shore power inlet
- Shore power/generator change over control operated from main control panel
- Polarity check system
- Earth leakage safety trip, circuit breakers on all circuits
- Power points (240v) in all cabins and living areas, helm position and galley
- Shaver points in washrooms
- Smoke detectors (galley, stateroom, lower lobby and crew area)
- Böning system

AIR CONDITIONING

- Air conditioning/heating reverse cycle
- 128,000 BTU chiller with 128,000 BTU fan capacity
- Suitable for ambient temperature to 40°C (e.g. tropical)
- Controls in all cabins and outlets in all areas (includes outlets in bathrooms and crew cabin)
- Standard 22.5kW generator is suitable (N.B. this has sufficient capacity for Gyro stabilisers as well as air conditioning)

FUEL SYSTEM

- Fuel tanks (in NS8 marine grade alloy) with interconnection system giving 4,500l/1,189 US gal/990 gal capacity
- Fuel fillers on port and starboard side decks
- High-capacity duplex fuel filters with water traps and change-over valves, water warning sensors connected to warning lights at lower helm
- Remote fuel cocks in cockpit locker
- Fuel gauges at main helm console

WATER SYSTEM

- Water tanks totalling 836l/221 US gal/184 gal plus 73l/19 US gal/16 gal hot water calorifier
- Water heated by engines and 240v immersion heater
- Automatic water pump with filter
- Main circuit breaker at switch panel
- Water level gauge
- Deck filler
- Electric quiet flush toilet system with 400l/106 US gal/88 gal holding tank, content gauge and low noise electric overboard discharge, with macerator backup system as well as dockside discharge system

FIRE EXTINGUISHERS / CONTROL SYSTEMS

- Automatic/manual override fire extinguishers in engine room
- Hand operated fire extinguishers (7) in owner's stateroom, forward stateroom, port and starboard guest cabins, galley, lower helm position and aft cabin

BILGE PUMPS

- Automatic/manual override electric bilge pumps in engine room (2), rudder area and forward accommodation (6 in all)
- High-capacity manual bilge pump with valve system and suction points in same areas
- Electric bilge pumps have controls and warning lights at main helm and warning light with audible alarm at sportbridge helm

OTHER STANDARD EQUIPMENT

- Ensign staff
- Fenders (8)
- Mooring warps (4)
- Boat hook
- First Aid kit
- Tool kit
- Owner's manual and engine manual
- Functional bed linen supplied to all cabins (except optional crew cabin)
- Set of towels (8 large, 8 hand)
- Set of glassware (8 settings consisting of tumbler and wine glasses)
- Set of Princess china (8 settings consisting of plate, side plate, bowl, cup and saucer)
- Set of cutlery (8 settings of David Mellor "Paris")

cutlery 7 pieces)

- Ship's document case
- Anchor winch back up handle

FINISHES

- Teak-laid decks to transom platform, steps to flybridge and sportbridge
- 'V' groove planked timber floor to galley, dinette and helm
- Furniture in choice of Rovere oak or Alba oak in satin finish. Silver oak or walnut in satin or gloss finishes available as an option
- Solid Surface floors in all bathroom suites
- Thermoformed Solid Surface wash hand basin vanity tops in all bathroom suites
- Galley countertop in Solid Surface with Solid Surface Sylmar White sink
- Choice of high-quality carpet and upholstery fabric from extensive range
- Blinds or sunscreens to all windows, doors and portholes
- Crew cabin has non-slip safety flooring, crew bathroom floor is Solid Surface with Solid Surface vanity tops

US SPECIFICATION INCLUDES

- 120/240v 60hz electrical system throughout including bespoke US
- socket arrangement including additional engine room outlet
- Additional outlet & stick vacuum mounted in port cabin wardrobe
- Clear bowl for generator fuel/water separator
- Dishwasher, 120v/60hz, in place of standard
- Exhaust clamps in stainless steel as per ABYC standards
- Generator upgrade to 29 kW / 60 Hz
- Bed linens- fitted & loose sheet, pillowcase (excluding crew cabin)
- Princess Yachts America HID number
- Propeller hubs drilled and tapped to suit prop puller
- Refrigeration - upgraded fridge/freezer in ~~Belle~~ insulated foam for all standard exterior seating/sunbed cushions
- Shore support - Dual 120/240v 50 Amp outlets with 75' Hubbell cords
- Spare set of anodes (hull, trim tab, hydraulic platform, and swim ladder)
- Speed microwave

- Teak decking to be 8mm thick in place of standard
- TV in forward VIP connected to Naim audio system
- TV in port guest stateroom connected to Naim audio system
- TV in starboard guest stateroom connected to Naim audio system
- Araknis 210 series 48 port POE network switch
- Shore water inlet to transom
- Fit seacock for later fitting of watermaker
- Industrial PC for remote connection to Boning hardware
- US Spec hosebib for standard deckwash
- Remove standard hailer horn



S 66



There is an undeniable presence about the new S66. Her slender streamlined form somehow also exudes a predatory air. A lightweight deep-V hull delivers on this promise with breath-taking agility up to 38 knots. When at anchor, peacefulness descends onto her generously appointed deck areas, which include a spacious foredeck seating area, whilst her hydraulic bathing platform and 3.3m tender garage become the perfect base for watersports.





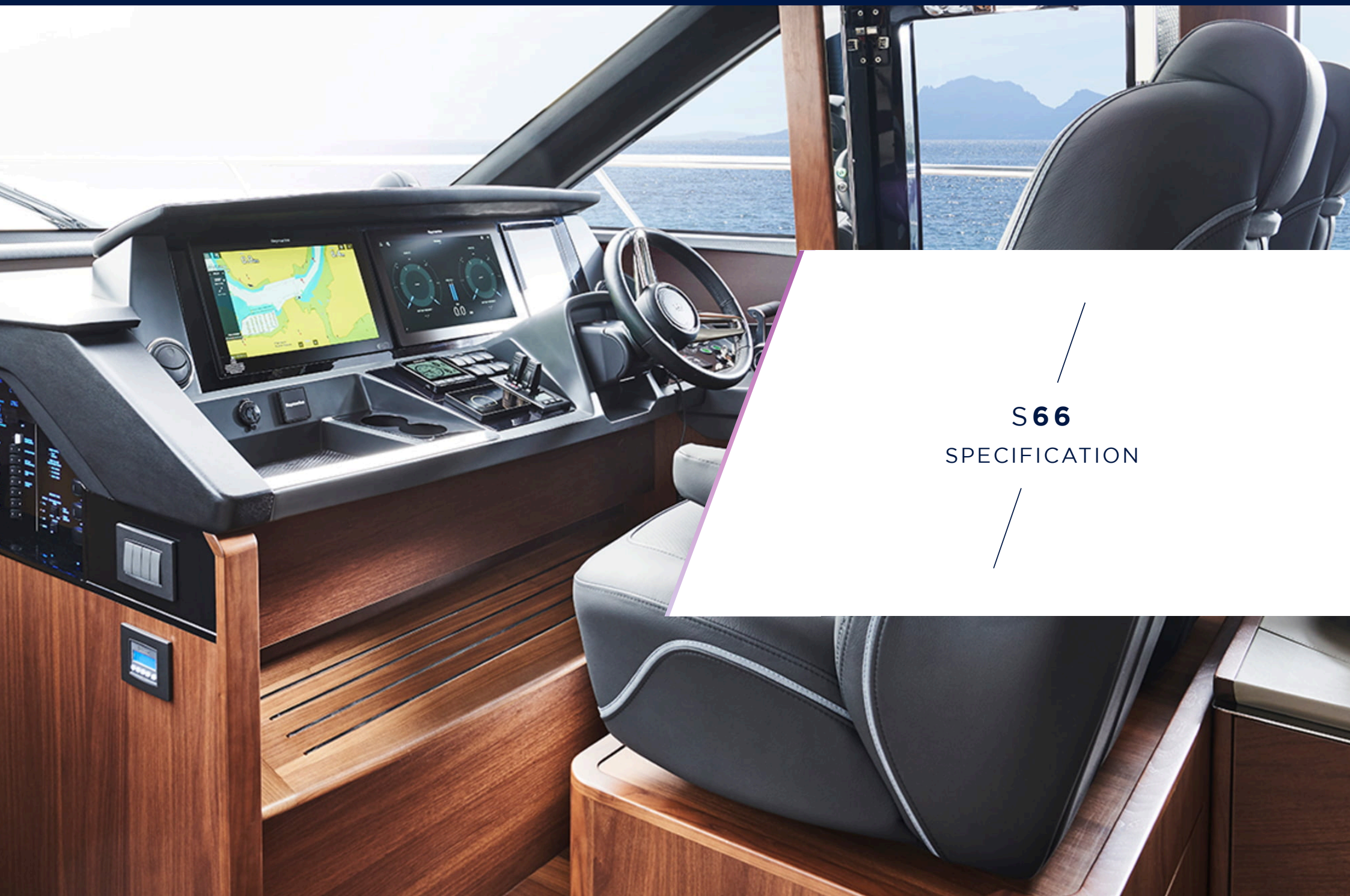
Captivating on the outside, she is distinctively cool inside. Her sociable galley aft arrangement, with opposing open-plan dining area, has sliding doors and a pop-up integrated opening electric window leading out to the cockpit to create an al fresco bar. Below deck eight guests are accommodated across four cabins, three of which are en-suite.



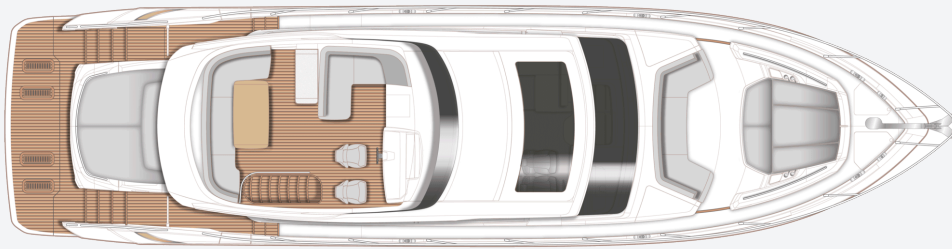


TAKE A VIRTUAL TOUR OF THE S66

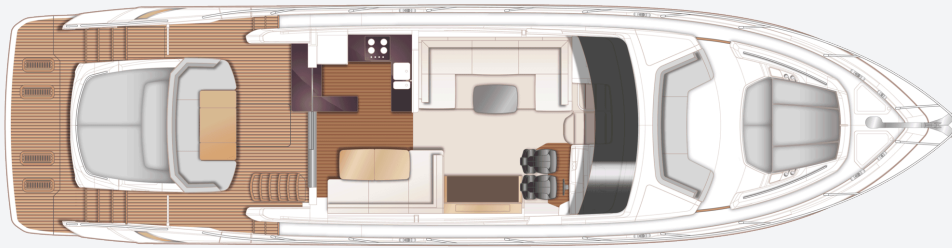




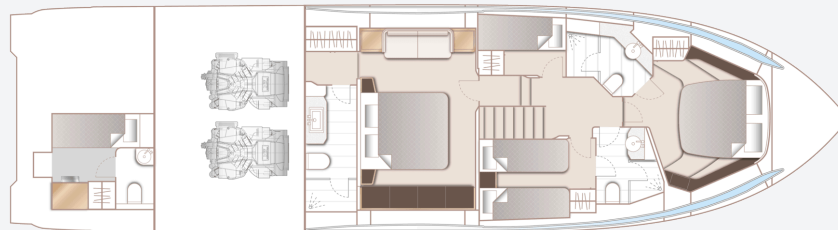
S66
SPECIFICATION



S66 Sportbridge



S66 Main Deck



S66 Lower Deck

PRINCIPAL DIMENSIONS

Length overall (incl. pulpit)	67ft 7in (20.61m)
Length overall (excl. pulpit)	65ft 8in (20.03m)
Beam	16ft 7in (5.04m)
Draft approx.	5ft 7in (1.70m)
Displacement approx. (half load)	41,224kg (90,883lbs)*
Fuel capacity	902 gal/1,083 US gal/4,100l
Water capacity (excl. calorifier)	176 gal/211 US gal/800l

ENGINES

Twin MAN V12-1400 (2 x 1,400mhp)	Speed range: 35-37 knots†
---	------------------------------

FULL SPECIFICATION

DECK FITTINGS

- Teak-laid transom platform, cockpit deck, sportbridge stairway and steps to side deck
- Reversible electric anchor winch with foredeck and helm position controls
- Stemhead roller with automatic anchor launch and retrieve
- Self-stowing (40kg/88lb) galvanised Delta anchor with 60m of 9.5mm chain
- Bow rope storage locker
- Freshwater deck/anchor wash
- Cast stainless steel bow (2), stern (2) and spring cleats (4)
- Stainless steel round 32mm pulpit and guardrails
- Stainless steel coachroof handrails
- Stainless steel bow fairleads (2) and stern fairleads (2)
- Foredeck escape hatch
- Foredeck U-shaped seating area and walk-through
- Foredeck sunbathing area with twin sunbeds including cushions and storage locker

- Deck storage lockers for fenders
- PVC rubbing band with stainless steel insert
- LED deck level lighting
- Illuminated crown logo to transom
- Full set of IMCO navigation lights
- Riding light
- Searchlight with remote control
- Twin electric horns
- Fuel and water fillers
- Ensign socket and staff
- Loudhailer (connected to VHF)

COCKPIT AND BATHING PLATFORM

- Self-draining
- U-shaped seating/dining area with folding teak table
- Sunbed aft
- Cockpit counter top (aligned with galley counter top and hinging window) with under-stairs storage unit
- LED overhead and deck level lighting
- Stainless steel handrails
- Garage (to take tender up to 3.3m) with

- electro-hydraulic door and tender launch system with electric winch
- Liferaft stowage locker
- Rope stowage lockers
- Lockable gas strut assisted hatch to lazarette
- Lockable gas strut assisted hatch to lazarette/optional crew cabin
- Lockable gas strut assisted hatch to engine room
- Locker containing remote fuel cocks, manual bilge pump with valve chest and manual controls for automatic fire extinguishers
- Twin transom gates leading to bathing platform
- Transom grab rail
- Electro-hydraulic raise/lower teak laid bathing platform (550kg SWL)
- Retractable bathing ladder (manual) in side of hydraulic platform
- Transom steps to access stern from bathing platform when in lowered position
- Hot and cold transom shower
- Fusion Signature 6.5" (2) speakers linked to saloon with local control

- 220/240v shore support inlet in locker
- Tonneau canvas cover
- Stairway to flybridge with teak step treads

HELM POSITION

- Twin helm seats with fore and aft adjustment for helmsman, S-logo to helm seat, flip up base to helm seat for door access.
- Instrument console with dual station controls and Raymarine Axiom XL16 screen, incorporating. Engine instruments, fuel gauges, alarms and rudder position indicator
- Dual station instruments and controls at Sportbridge and Lower Helm Positions:
 - power-assisted electro-hydraulic steering
 - adjustable steering wheel
 - rudder position indicator
 - magnetic compass
 - electronic engine controls
 - trim tab controls with indicators
 - bow thruster control
 - electric anchor winch remote control
 - autopilot
 - VHF with DSC R/T with intercom
 - remote control searchlight
 - horn button

- Mobile phone holder
- Drinks holders
- Toughened glass screen (clear for night vision)
- Windscreen wipers with freshwater windscreen wash
- Exterior black mesh windscreen covers
- Bilge pump controls with visual pump running warnings
- 24v and 240v electrical control panel
- Riding light, helm and navigation light control switches
- USB charging point (2)
- 220/240v outlets (1 at helm, 1 at companion area)
- LED overhead lighting (24v) and night lighting
- Pantograph helmsman's side door to starboard side deck
- Storage drawers beneath navigator seat
- Fitted carpet

SPORTBRIDGE

- Instrument console with dual station controls and Raymarine Axiom XL16 screen (see Lower Helm) incorporating engine instruments, fuel gauges, alarms and rudder position indicator
- Helm Cup holders (2) and storage box at helm

position

- Adjustable steering wheel
- Separate helm and navigator seats (with sufficient space to allow ingress/egress without disturbing helmsman) with fore and aft adjustment for helmsman
- U-shaped upholstered companion seating (converts to sunpad with infill)
- Large U-shaped upholstered seating area with storage below
- Movable back rest between dining and companion seating (to convert seating areas between U-shaped and J-shaped)
- Teak double-fold dining table with drinks holders
- Marine audio system with waterproof speakers (2)
- Wet bar with top-loading cool box, waste bin and sink/tap, with solid surface counter top with twin skin GRP cover
- Lewmar type flybridge hatch to aft cockpit
- Wind deflector screens (grey tinted Perspex)
- Stainless steel handrails
- LED deck level lighting
- GRP radar arch
- Matched whip aerials for VHF R/T radio

- Console, seat, wet bar and table covers
- Optional bimini with/without electro hydraulic operation/lighting

SALOON

- U-shaped sofa with storage/crockery drawers
- Coffee table
- Sideboard unit with bottle, glass storage and refrigerator
- 55" UHD LED TV on rise and fall
- Marine audio system connected to speakers (4)
- Panoramic tinted toughened glass windows port and starboard
- Manual tension venetian blinds to all windows and doors
- LED overhead and concealed lighting (24v)
- Access stairway to lower accommodation
- Skylights with dark grey tint and sliding blinds (option of powered opening roof)
- Fitted carpet
- Electric drop window to port
- 220/240v outlets (2)
- USB charging points (2)

DINING AREA

- L-shaped sofa with folding dining table/cup

holders

- Stainless steel framed sliding door to cockpit with integrated hinging window aft of galley and integrated Skysol blind
- Blinds to all windows and doors
- LED overhead and concealed lighting (24v)
- Timber flooring (V groove planked)
- 220/240v outlet (2)
- USB charging points (2)

GALLEY

- Solid surface counter top
- 4-zone ceramic hob
- Extractor fan
- Combination microwave/convection oven with grill
- Twin-bowl (1.5) stainless steel sink with mixer tap
- Dishwasher
- Full height fridge/freezer (281l)
- Waste bin
- Drawers and storage cupboards
- Manual tension venetian blinds or sunscreens to all windows and doors
- LED overhead and task lighting (24v)
- 220/240v outlets (4)

- Timber flooring (V groove planked)

ACCOMODATION

- All cabins and bathrooms feature opening portholes
- All cabins feature 220/240v power points
- All bathrooms feature electric freshwater toilets and 240v shaver points

OWNER'S STATEROOM

- Large double bed with drawers below
- Twin bedside tables
- Walk-through wardrobe area with hanging, drawer storage and full-length mirror
- Dressing table
- Sofa
- Storage lockers and drawers
- Fusion Apollo RA-770 paired with speakers (2)
- Panoramic windows including opening porthole
- Manual tension venetian blinds
- LED overhead and concealed lighting (24v)
- Individual berth lights
- 220/240v outlets (4)
- USB charging points (4)
- Fitted carpet

EN-SUITE BATHROOM

- Wash basin with thermoformed, solid surface counter top
- Mirror to vanity unit
- Storage lockers
- Shower compartment with automatic pump out
- Extractor fan
- Window with opening porthole
- Manual tension venetian blinds
- LED overhead and concealed lighting (24v)
- Bathroom accessories
- Solid surface flooring

FORWARD STATEROOM

- Large double bed with drawers below
- Wardrobe with shelves and full-length mirror
- Dressing table
- Storage lockers
- Windows with opening portholes
- Manual tension venetian blinds
- Deck hatch
- LED overhead and concealed lighting (24v)
- TV connected to radio with Bluetooth facility
- Individual berth lights
- 220/240v outlets (3)
- USB charging points (4)

- Fitted carpet

EN-SUITE BATHROOM

- Wash basin with thermoformed, solid surface counter top
- Mirror
- Storage lockers
- Shower compartment with automatic pump out
- Extractor fan
- Window with opening porthole
- Manual tension venetian blinds
- LED overhead and concealed lighting (24v)
- Bathroom accessories
- Solid surface flooring

STARBOARD GUEST CABIN

- Two single beds with drawers below (with option of sliding double bed conversion)
- Bedside table
- Wardrobe with shelves
- Mirror
- Storage lockers and drawers
- Window with opening portholes
- Manual tension venetian blinds
- LED overhead and concealed lighting (24v)
- Individual berth lights

- 220/240v outlets (2)
- USB charging points (2)
- Fitted carpet

EN-SUITE BATHROOM

- Wash basin with thermoformed, solid surface counter top
- Mirror
- Storage lockers
- Shower compartment with automatic pump out
- Extractor fan
- Window with opening portholes
- Manual tension venetian blinds
- LED overhead and concealed lighting (24v)
- Bathroom accessories
- Solid surface flooring
- Day access door from lower lobby

PORT GUEST CABIN

- Two single beds (bunk)
- Wardrobe with shelf
- Mirror
- Storage lockers
- Window with opening portholes
- Manual tension venetian blinds
- LED overhead and concealed lighting (24v)

- Individual berth lights
- 220/240v outlet (1)
- USB charging points (2)
- Fitted carpet

LOWER ACCOMODATION LOBBY / PASSAGEWAY AREA

- Combination washer /dryer with storage area above located below companionway stairs (option of separate washing and drying machines if required)
- Fitted carpet

POWER AND DRIVE SYSTEMS

- 5-bladed propellers in nickel aluminium bronze
- Bow thruster with dual-station controls
- Engine room lighting
- Engine room access from cockpit deck, via hatch with ladder
- Power-assisted electro-hydraulic steering system
- Trim tabs with indicators
- Electronic engine and gear shift controls
- Engine room extractor fan with electronic time delay
- Fresh water supply point in engine room

- Dripless self-aligning shaft seals
- Engine room soundproofed
- High volume air intakes
- Engine exhaust silencers
- Engine beds integrally moulded with hull for strength and vibration absorption
- Forward and aft engine room bulkheads integrally bonded
- Engines flexibly mounted
- Automatic fire extinguisher with remote override control
- Automatic and manual bilge pumps
- Propeller shafts in Marinemet
- High speed balanced rudders
- Cathodic protection for sterngear
- Sterngear, engines, fuel tank fillers, etc all electrically bonded

ELECTRICAL SYSTEMS

24 Volt:

- 4 x heavy duty batteries for engine starting
- 4 x heavy duty auxiliary batteries
- 1 x generator battery
- Battery link facility with remote control at helm position
- Battery banks are charged using a voltage

- sensitive relay that parallels both battery banks when a charging source is present
- 80-amp battery charger charges both banks of batteries via an automatic switch charging system
- 6-amp battery charger for generator battery
- Remote battery master switches with control switch at main switch panel
- Circuit breakers on all circuits
- 12v voltage dropper for certain navigation and radio circuits
- 24v to 240v/50Hz inverter for saloon A/V, galley fridge and telephone system
- Galvanic isolation system

220/240 Volt:

- EU specification: 11Kw diesel generator in own sound shield with water cooled specially silenced exhaust systems
- US specification: 13.5kW diesel generator in own sound shield with water cooled specially silenced exhaust systems
- Automatic fire extinguisher situated by generator
- 63-amp shore support inlet
- Generator/shore support change-over switch

- Polarity check system
- Earth leakage safety trip
- Circuit breakers on all circuits
- Power points in: owner's stateroom, guest cabins, galley and saloon area
- Shaver points in all bathrooms

FUEL SYSTEM

- Twin fuel tanks (in NS8 marine grade alloy) with interconnection system giving 902 gal /1,083 US gal / 4,100l capacity
- Fuel fillers on port and starboard side decks
- High-capacity duplex fuel filters with water traps with change-over valves, water warning sensors connected to warning lights at lower helm
- Remote fuel cocks in cockpit locker
- Fuel gauges at main helm console

WATER SYSTEM

- Water tanks totalling 176 gal / 211 US gal / 800l plus 16 gal /19 US gal / 73l hot water calorifier
- Water heated by engines and 240v immersion heater
- Automatic water pump with filter
- Main circuit breaker at switch panel

- Water level gauge
- Deck filler
- Electric freshwater toilet system with 60 gal / 72 US gal / 272l holding tank, content gauge and low noise electric overboard discharge, with macerator backup system as well as dockside discharge system

BILGE PUMPS

- Automatic/manual override electric bilge pumps in engine room (2), ruder area, lazarette and forward accommodation (6 in all)
- High-capacity manual bilge pump with valve system and suction points in same areas
- Electric bilge pumps have controls and warning lights at main helm and warning light with audible alarm at sportbridge helm

FIRE EXTINGUISHERS

- Automatic/manual override fire extinguishers in engine room with warning system at helm position
- Hand-operated fire extinguishers (6) in owner's stateroom, forward and starboard guest cabins, utility area, galley and helm position
- Additional extinguisher fitted when optional aft

cabin is specified

OTHER STANDARD EQUIPMENT

- Ensign staff
- Fenders (6)
- Mooring warps (4)
- Boat hook
- First-aid kit
- Tool kit
- Owner's manual and engine manual
- Quilted bed covers supplied to all cabins (except optional crew cabin)
- Set of glassware (8 settings consisting of tumbler and wine glasses)
- Set of Princess china (8 settings consisting of plate, side plate, bowl, cup and saucer)
- Set of cutlery (8 settings of David Mellor "Paris" cutlery 7 pieces)
- Ship's document case
- Anchor winch back up handle
- S66 canopy badges

FINISHES

- Teak-laid decks to transom platform, steps to side decks, cockpit deck steps to sportbridge and steps to side decks

- Timber-laid floor to galley and dining area (V groove planked)
- Furniture in choice of Rovere Oak or Alba Oak in satin lacquer finish as standard. Silver Oak or Walnut in satin or gloss lacquer finishes available as an option
- Solid surface floors in all bathroom suites in guest accommodation
- Solid surface wash basin counter tops in all bathroom suites in guest accommodation
- Galley counter top in solid surface
- Choice of high-quality carpet and upholstery fabric from extensive range
- Blinds or sunscreens to all windows and portholes
- Optional crew cabin has non-slip safety flooring, and crew bathroom has white solid surface counter tops

US SPECIFICATION INCLUDES

- 120/240v 60hz electrical system throughout including bespoke US socket arrangement
- Additional outlet & stick vacuum mounted in guest cabin wardrobe
- Airconditioning / reverse cycle heating (90,000 BTU)

- Bed linens- fitted & loose sheet, pillowcase (excluding optional crew cabin)
- Clear bowl for generator fuel/water separator
- Exhaust clamps in stainless steel as per ABYC standards
- Forward salon to be one single level with loose coffee table in place of standard
- Generator and batteries relocated to lazarette
- Premium audio system
- Princess Yachts America HID Number
- Propeller hubs drilled and tapped to suit prop puller
- Refrigeration - upgraded fridge/freezer in galley
- Reticulated foam for all standard exterior seating/sunbed cushions
- Shore support - Dual 120/240v 50 Amp outlets with 75' Hubbell cords
- Shore water inlet
- Spare set of anodes (hull, trim tabs, hydraulic platform, and swim ladder)
- Speed Oven Microwave, 120v/60hz, in place of standard
- Teak decking to be 8mm thick in place of

- standard
- Thru Hull for later fitting of watermaker



S 62



Powerful yet elegant, the S62's sleek exterior styling presents a dynamic, agile stance. With an optimised hull form spearheading her efficiency, her MAN V8 1200 engines mean you can experience speeds up to 38 knots. When at anchor her electro-hydraulic bathing platform creates a convenient launch system for a 3.4m tender, a jet ski, or simply a secluded swimming platform.





Her sociable galley aft arrangement features an open-plan dining area with sliding doors and a fully opening window leading out to the cockpit. Below deck, six guests are comfortably accommodated across an en suite full-beam owner's stateroom and two further guest cabins with the option of an additional crew cabin aft.



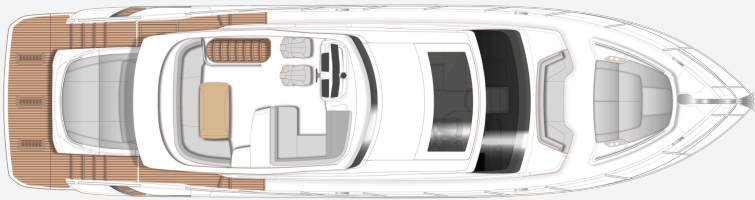


TAKE A VIRTUAL TOUR OF THE S62





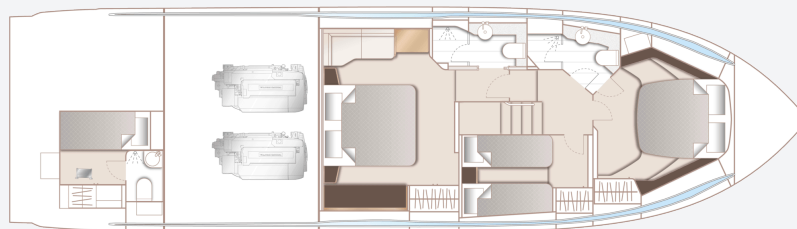
S62
SPECIFICATION



S62 Sportbridge



S62 Main Deck



S62 Lower Deck

PRINCIPAL DIMENSIONS

Length overall (incl. pulpit)	62ft 11in (19.17m)
Length overall (excl. pulpit)	62ft 1in (18.92m)
Beam	16ft 0in (4.87m)
Draft	4ft 9in (1.46m)
Displacement approx. (lightship)	27,200kg (59,957lbs)*
Fuel capacity	715 gal/858 US gal/3,250l
Water capacity (incl. calorifier)	132 gal/159 US gal/603l

ENGINES

Twin MAN V8-1200 (2 x 1200hp)	Speed range: 36-38 knots†
--------------------------------------	------------------------------

FULL SPECIFICATION

DECK FITTINGS

- Teak-laid transom platform, cockpit deck, sportbridge stairway and steps to side deck
- Reversible electric anchor winch with foredeck and helm position controls
- Stemhead roller with automatic anchor launch and retrieve
- Self-stowing (32kg/77lb) Delta anchor with 40m of chain
- Bow rope storage locker
- Freshwater deck/anchor wash
- Walk through coach-roof seating area
- Foredeck sunbathing area
- Deck storage locker for fenders and ropes
- Stainless steel bow, stern and spring cleats (8)
- Stainless steel pulpit and guardrails
- Stainless steel coach-roof handrails
- Foredeck hatch
- PVC rubbing band with stainless steel insert
- LED deck level lighting
- Full set of IMCO navigation lights
- Riding light
- Searchlight with remote control

- Illuminated crown logo to transom
- Twin electric horns
- Fuel and water fillers
- Ensign socket and staff

COCKPIT AND BATHING PLATFORM

- Self-draining
- U-shaped seating/dining area with folding teak table
- Sunbed aft
- LED overhead and deck level lighting
- Stainless steel handrails
- Garage (to take tender up to 3.3m) with electro-hydraulic door and tender launch system with electric winch
- Liferaft stowage locker
- Rope stowage lockers
- Lockable gas strut assisted hatch to lazarette
- Lockable gas strut assisted hatch to lazarette/optional crew cabin
- Lockable gas strut assisted hatch to engine room
- Locker containing remote fuel cocks, manual

- bilge pump with valve chest and manual controls for automatic fire extinguishers
- Twin transom doors leading to bathing platform
- Electro-hydraulic raise/lower teak laid bathing platform (450kg SWL)
- Retractable bathing ladder (manual) in side of hydraulic platform
- Transom steps to access stern from bathing platform when in lowered position
- Hot and cold transom shower
- Marine audio system with radio and streaming capabilities with waterproof speakers
- 220/240v shore support inlet in locker
- Tonneau canvas cover

SPORTBRIDGE

- Twin helm seats with fore and aft adjustment for helmsman
- Instrument console with dual station controls and 9" colour multifunctional display incorporating engine instruments, fuel gauges, alarms and rudder position indicator (see Lower Helm Position)

- 16" colour mfd screen incorporating GPS/ Chartplotter, log and echo sounder
- Adjustable steering wheel
- Drinks holders
- Wetbar with sink, storage, top loading coolbox and optional barbeque
- Aft L-shaped upholstered seating
- Teak folding table
- Upholstered L-shaped companion seating (converts to sunpad)
- Marine audio system with radio and streaming capabilities with waterproof speakers
- Clear view hatch to aft cockpit
- Wind deflector screens
- Stainless steel handrails
- LED deck level lighting
- GRP radar arch
- Matched whip aerials for VHF R/T and radio
- Console and seat covers
- Optional folding bimini with manual/ electro hydraulic operation

HELM POSITION

- Twin helm seats with fore and aft adjustment for helmsman
- Instrument console with dual station controls

- and 9" colour multifunctional display incorporating engine instruments, fuel gauges, alarms and rudder position indicator
- 16" brilliant colour mfd multi-function display incorporating GPS/chartplotter, log and echo sounder
- Dual station instruments and controls at Sportbridge and Lower Helm Positions:
 - power-assisted electro-hydraulic steering
 - adjustable steering wheel
 - rudder position indicator
 - high-speed magnetic compass
 - electronic engine controls
 - trim tab controls with indicators
 - bow thruster control
 - electric anchor winch remote control
 - autopilot
 - VHF with DSC R/T with intercom
 - remote control searchlight
 - horn button
- Drinks holders
- Toughened glass screen (clear for night vision)
- Windscreen wipers with freshwater windscreen wash
- Exterior black mesh windscreen covers
- Bilge pump controls with visual pump running

warnings

- 24v and 240v electrical control panel
- Riding light, helm and navigation light control switches
- USB connection point
- LED overhead lighting (24v) and night lighting
- Electric drop window
- Timber flooring - V grooved planked

SALOON

- U-shaped sofa
- Coffee table
- Sideboard unit with bottle and glass storage
- Refrigerator
- 50" UHD LED TV on rise and fall
- Fusion Apollo MS-RA770 Audio stereo system paired with Focal 100 ICW5 speakers (4)
- Electric drop window to port
- Blinds or sunscreens to all windows and doors
- LED overhead and concealed lighting (24v)
- Access stairway to lower accommodation
- Skylights with reflecto-glass and sliding blinds (option of powered opening roof)
- Fitted carpet

DINING AREA

- L-shaped sofa
- Folding dining table
- Stainless steel framed sliding door to cockpit with integrated hinging window aft of galley
- Blinds or sunscreens to all windows and doors
- LED overhead and concealed lighting (24v)
- Timber flooring (planked)

GALLEY

- Solid surface counter top
- 4-zone ceramic hob
- Extractor fan
- Combination microwave/convection oven with grill
- Stainless steel sink with mixer tap
- Full height fridge/freezer (270l)
- Waste bin
- Drawers and storage cupboards
- Blinds or sunscreens to all windows and doors
- LED overhead and task lighting (24v)
- 220/240v outlets (4)
- Timber flooring (planked)

ACCOMMODATION

- All cabins and bathrooms feature opening portholes
- All cabins feature 220/240v power points
- All bathrooms feature electric freshwater toilets and 240v shaver points

OWNER'S STATEROOM

- Large double bed with drawers below
- Twin bedside tables
- Wardrobes with hanging and drawer storage
- Dressing table
- Mirror
- Sofa
- Storage lockers and drawers
- 43" UHD LED TV
- Fusion MS-RA670 audio system paired with Fusion 6" CL602 (2) speakers
- Panoramic windows including opening porthole
- Curtains or blinds
- LED overhead and concealed lighting (24v)
- Individual berth lights
- 220/240v outlets (2)
- USB charging point
- Fitted carpet

EN-SUITE BATHROOM

- Wash basin with solid surface counter top
- Mirror
- Storage lockers
- Shower compartment with automatic pump out
- Extractor fan
- Window with opening porthole
- Manual tension venetian blind
- LED overhead and concealed lighting (24v)
- Bathroom accessories
- Solid surface flooring

FORWARD STATEROOM

- Large double bed with drawers below
- Wardrobe with shelves
- Dressing table
- Mirror
- Storage lockers
- Window with opening porthole
- Manual tension venetian blind
- Deck hatch
- LED overhead and concealed lighting (24v)
- TV connected to radio with Bluetooth facility
- Individual berth lights
- 220/240v outlets (2)
- USB charging point

- Fitted carpet

EN-SUITE BATHROOM

- Wash basin with solid surface counter top
- Mirror
- Storage lockers
- Shower compartment with automatic pump out
- Extractor fan
- Window with opening porthole
- Manual tension venetian blind
- LED overhead and concealed lighting (24v)
- Bathroom accessories
- Solid surface flooring
- Access door from passageway

STARBOARD GUEST CABIN

- Two single beds with drawers below (with option of double bed conversion)
- Bedside table
- Wardrobe with shelves
- Mirror
- Storage lockers and drawers
- Window with opening porthole
- Manual tension venetian blind
- LED overhead and concealed lighting (24v)
- Individual berth lights

- 220/240v outlets (2)
- USB charging point
- Fitted carpet

OPTIONAL CREW CABIN (IN PLACE OF AFT LAZARETTE)

- Single bed with storage below
- Wardrobe with shelf
- Mirror
- Wash basin with solid surface counter top
- Storage lockers
- Opening porthole
- LED overhead lighting (24v)
- Individual berth light
- 220/240v outlet (1)
- Non-slip safety flooring

EN-SUITE BATHROOM

- Shower with automatic pump out
- Extractor fan
- LED overhead lighting (24v)
- Bathroom accessories

POWER AND DRIVE SYSTEMS

- 5-bladed propellers in nickel aluminium bronze
- Bow thruster (130kgf/287lbf) with dual-station

controls

- Engine room lighting
- Engine room access hatch and ladder
- Power-assisted electro-hydraulic steering system
- Trim tabs with indicators
- Electronic engine and gear shift controls
- Engine room extractor fan with electronic time delay
- Fresh water supply point in engine room
- Dripless self-aligning shaft seals

ELECTRICAL SYSTEMS

24 Volt:

- 4 x heavy duty batteries for engine starting
- 4 x heavy duty auxiliary batteries
- 1 x generator battery
- Battery link facility with remote control at helm position
- Both battery banks are charged using a voltage sensitive relay that parallels both battery banks when a charging source is present
- 60 amp battery charger charges both banks of batteries via an automatic switch charging system
- Remote battery master switches with control

switch at main switch panel

- Circuit breakers on all circuits
- 12v voltage dropper for certain navigation and radio circuits

220/240 Volt:

- 11Kw diesel generator in own sound shield with water cooled specially silenced exhaust
- Automatic fire extinguisher situated by generator
- 50 amp shore support inlet
- Generator/shore support change-over switch
- Polarity check system
- Earth leakage safety trip
- Circuit breakers on all circuits
- Power points in: owner's stateroom, guest cabins, galley and saloon area
- Shaver points in all bathrooms

FUEL SYSTEM

- Twin fuel tanks (in NS8 marine grade alloy) with interconnection system giving 715 gal / 858 US gal / 3,250l
- Fuel fillers on port and starboard side decks
- High-capacity duplex fuel filters with water traps with change-over valves, water warning

sensors connected to warning lights at lower helm

- Remote fuel cocks in cockpit locker
- Fuel gauges at main helm console

WATER SYSTEM

- Water tanks totalling 116 gal / 159 US gal / 530l plus 16 gal / 19 US gal / 73l hot water calorifier
- Water heated by engines and 240v immersion heater
- Automatic water pump with filter
- Main circuit breaker at switch panel
- Water level gauge
- Deck filler
- Electric freshwater toilet system with 55 gal / 66 US gal / 250l holding tank, content gauge and low noise manual overboard discharge, with macerator backup system as well as dockside discharge system

FIRE EXTINGUISHERS

- Automatic/manual override fire extinguishers in engine room with warning system at helm position
- Hand-operated fire extinguishers (5) in owner's stateroom, forward and starboard guest cabins,

galley and helm position

- Additional extinguisher fitted when optional aft cabin is specified

BILGE PUMPS

- Automatic/manual override electric bilge pumps in engine room (2), rudder area, lazarette and forward accommodation (6 in all)
- High-capacity manual bilge pump with valve system and suction points in same areas
- Electric bilge pumps have controls and warning lights at main helm and warning light with audible alarm at sportbridge helm

OTHER STANDARD EQUIPMENT

- Ensign staff
- Fenders (6)
- Mooring warps (4)
- Boat hook
- First-aid kit
- Tool kit
- Owner's manual and engine manual
- Quilted bed covers supplied to all cabins (except optional crew cabin)
- Ship's document case
- Anchor winch back up handle

FINISHES

- Teak-laid decks to transom platform, steps to side decks, cockpit deck steps to sportbridge, sportbridge and steps to side decks
- Timber-laid floor to galley and dining area, planked
- Furniture in choice of Rovere Oak or Alba Oak in satin lacquer finish as standard. Silver Oak or Walnut in satin or gloss lacquer finishes available as an option
- Solid surface floors in all bathroom suites in guest accommodation
- Solid surface counter tops in all bathroom suites in guest accommodation
- Galley counter top in solid surface
- Choice of high-quality carpet and upholstery fabric from extensive range
- Blinds or sunscreens to all windows and portholes
- Optional crew cabin has non-slip safety flooring, crew bathroom has white solid surface counter tops

US SPECIFICATION INCLUDES

- 120/240v 60hz electrical system throughout including bespoke US socket arrangement including additional engine room outlet
- Airconditioning / reverse cycle heating (82,000 BTU)
- Bed linens- fitted & loose sheet, pillowcase (excluding optional crew cabin)
- Built to ABYC and US Coast Guard recommendations
- China, cutlery, and glasses - 6 place settings
- Clear bowl for generator fuel/water separator
- Exhaust clamps in stainless steel as per ABYC standards
- Generator - 21.5 kW / 60 Hz Onan in place of standard 11 kW / 50 Hz
- Holding tank system with electric discharge (in addition to manual overboard and dockside discharge facilities)
- Icemaker fitted in salon
- Premium audio system
- Princess Yachts America HID tag
- Propeller hubs drilled and tapped to suit prop puller
- Refrigeration - upgraded fridge/freezer in
- ~~Ball~~ Insulated foam for all standard exterior

seating/sunbed cushions

- Shore support - Dual 120/240v 50 Amp outlets with 75' Hubbell cords
- Shore water inlet
- Spare set of anodes (hull, trim tabs, bow thruster, and hydraulic platform)
- Speed oven, 120v/60hz, in place of standard
- Teak decking to be 8mm thick in place of standard
- Thru hull for later fitting of watermaker
- TV in VIP stateroom connected to radio with Bluetooth facility



SAFEGUARDING YOUR SANCTUARY

Your yacht is your haven, so the wellbeing of you and your family is of upmost importance to us. That's why we offer the option of the 'Princess Lifeline' powered by MedAire. A 24/7 SOS service providing access to medical and security assistance. One phone call connects you to MedAire's team of over 200 global security experts and 80,000 accredited medical providers who can assist you in the event of a medical or travel safety emergency. You can relax on board knowing everything is taken care of.



OUR PARTNERS

Princess is proud to partner with a few exclusive brands who share our vision and brand values, and deliver exceptional experiences to their customers.



To celebrate our 50th anniversary, **SEABOB** created a Limited Edition collection which was the start of a unique relationship with this successful marine brand. The success of our 50th anniversary limited edition SEABOB marked the start of a unique relationship with this successful marine brand. We have since collaborated on a collection of limited edition designs as the perfect complement to your Princess yacht.



As we evolve our technology offering on each and every Princess, our partnership with **NAIM** provides world class audio visual systems that continue to rewrite the audiophile rule book.



Princess was honoured to become the first luxury yacht manufacturer to officially collaborate with **The Marine Conservation Society**. It's our way to support and sustain marine ecology, securing an environment for future generations to discover and explore.



With a shared passion for sustainability and ocean conservation, we recently partnered with **Ecoworks Marine** to help tackle the challenge of creating a more environmentally friendly approach to yacht cleaning. In a first for the industry, Ecoworks Marine have developed their 'Preserve the Living Seas' range, a unique collection of cleaning products that are fully biorenewable, quickly biodegradable and sustainably formulated.



Williams Jet Tenders are our provider of choice, with every Princess yacht designed to accommodate the models in their range.



RECOGNITIONS

Our priority is to be considered the best by our owners, but recognition by independent experts through a number of prestigious awards has given Princess and our craftspeople a tremendous sense of pride.



Oceanway China Yacht Awards

Best of the Year 24-30m Superyacht

Most Popular Award 24-30m

X95

2022

Oceanway China Yacht Awards

Best Layout 60-80ft motor yacht

Y72

2022

Oceanway China Yacht Awards

Best Layout 45-60ft motor yacht

F45

2022

Motor Boat Awards

Best Flybridge up to 60ft

F45

2022

Motor Boat Awards

Best Flybridge over 60ft

Y72

2022

Robb Report

Best of the Best Yacht

X95

2021

IBI Boat Builder Awards

Best Apprenticeship Scheme

Princess Royal Training Award

Apprentice Scheme

2020

World Yachts Trophies

Best Shipyard

2019

The Sunday Times Profit Track**100**

Best Brand Award

Princess Yachts Limited

2019

Motor Boat Awards

Best Flybridge up to 60ft

F55

2019

Asia Pacific Boating Awards

Best Yacht Design Innovation

R35

2019

IBI Boat Builder Awards

Retail Marketing Initiative

R35 Communications Campaign

2018

World Yachts Trophies - Yachts**France**

Best Layout 45-62'

F55

2018

Asia Boating Award

Best Sports cruiser over 55ft

V65

2018

Motor Boat Awards

Sportscruisers over 45ft

S60

2018

Asia Boating Awards

Best Sports cruiser up to 45ft

V40

2017

Motor Boat Awards

Sportscruiser over 45ft

V58

2017

Motor Boat Awards

Flybridge over 55ft

75 Motor Yacht

2017

World Superyacht Awards

Semi-Displacement & Planing Two

Deck Motor Yacht

Antheya 35M

2016

Asia Boating Awards

Best Production Motor Yacht

(15m-24m)

75 Motor Yacht

2016



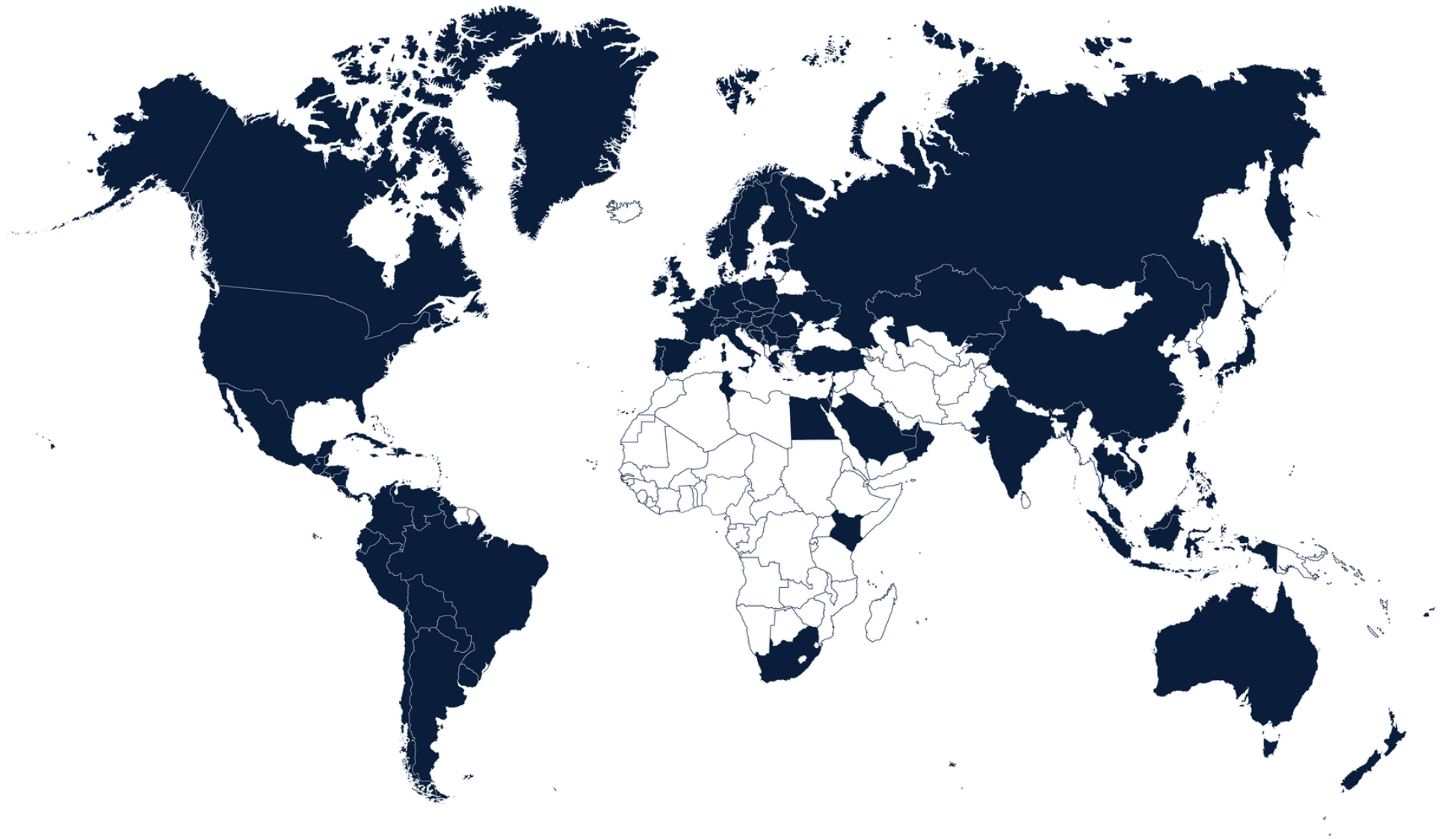
DISTRIBUTOR
NETWORK



With an extensive network of distributors around the globe, we are able to bring you personalised world-class service almost anywhere. We do all that we can to make sure that the process of buying a Princess is yet another exciting aspect of ownership.

Our specialist dealers have years of experience and unparalleled knowledge of our yachts. For more information on any one of the yachts in our range, please contact your local Princess office. Address and contact details can be found on our [**website**](#).

GLOBAL COVERAGE





FURTHER DETAILS

STYLING AND ACCESSORIES
SUPPLIED BY KIND PERMISSION
OF:
Anna New York

Cristal et Bronze
Cub-ar
Diptyque
Gio Bagnara
Luxury Living
Pickett
Staub
Stelton
Zwilling

PHOTOGRAPHY:
Mike Evans
Quin Bisset
George Edwards





Version 1.0

Updated August 05th 2021

* Displacements are calculated with 50% fuel and water with liferaft but with no optional equipment fitted or other gear.

† Maximum speeds will vary depending on cleanliness of hull, condition of sterngear, loading of craft, water and air temperatures, sea conditions and other factors. Speed estimates are therefore given in good faith but without warranty or liability on the part of Princess Yachts Limited. Craft illustrated in this brochure may be fitted with certain optional equipment. Specifications may be changed at any time without notice or liability.

‡ Certain specifications, which vary by model, are upgraded on Princess yachts built for use in North America. Thus, specifications and equipment will vary from the information listed in the brochure for North American Princess yachts (e.g. air-conditioning and an upgraded generator will be included as standard for all North American models and electric cooking facilities will be supplied in place of gas systems). Please consult the USA Specification Brochure for full details regarding the North American specifications for individual models.



THANK YOU

For more information or to find a distributor,
please visit our [website](#).