

# S60



S60



Powerful yet elegant, the new S60 is unmistakably S Class. Her sleek exterior styling with sculpted hull glazing generates a dynamic, agile stance. With an optimised hull form spearheading her efficiency she can reach speeds of up to 38 knots. When at anchor her generous deck areas provide space for relaxation including a foredeck seating and sunbathing area, whilst a tender or jet ski can be quickly launched and stowed in the large stern garage. Her sociable main deck features a galley aft arrangement with open-plan dining area, and sliding doors with a fully opening window leading out to the cockpit.

Potente e elegante, o novo modelo S60 é indubitavelmente um S Class. Seu estilo exterior elegante e a vitrificação de seu casco esculpido criam uma aparência dinâmica e ágil. Com formato de casco otimizado para maior eficiência, esse modelo pode atingir velocidades de até 38 nós. Quando fundeado, suas amplas áreas de convés oferecem um espaço relaxante, incluindo área de estar no convés de frente e área para banho de sol, com garagem à ré para um bote ou jet ski. O arranjo social de seu convés principal apresenta uma cozinha de ré com área de refeições aberta e portas deslizantes com abertura total para o cockpit.

Potente pero elegante, el nuevo S60 es sin lugar a dudas una Clase S. Su diseño exterior elegante con ventanales integrados en el casco genera una línea dinámica y ágil. Con sus líneas de casco optimizadas logra una mayor eficiencia y puede alcanzar velocidades de hasta 38 nudos. Una vez fondeado, sus generosas zonas de cubierta ofrecen un espacio para relajarse, que incluyen una amplia zona de asientos a proa y solárium, mientras que se puede estibar una embarcación auxiliar o una moto acuática en el amplio garaje de popa. Su cubierta principal cuenta con una cocina de popa con zona de comedor abierta, puertas correderas y con una ventana totalmente practicable con salida a la bañera.

强劲而优雅，全新S60无疑是S级的代表。她圆润的外观造型与船体雕刻玻璃，创造一个动态的、灵活的姿态。优化的船体形式能实现更高的效率，她拥有高达38节的速度。大器的甲板区域提供了休憩区域，包括前甲板座位和日光浴区，而补给艇或水上摩托车可以存放在偌大的船艙库存放空间并快速启动。她的主甲板适合交友，设有开放式用餐区的厨房位于后甲板，可完全打开的窗口滑门将视线扩大至并驾驶舱。



Leistungsstark und trotzdem elegant - die neue S60 ist unübersehbar eine S-Klasse. Ihr schickes Außenstyling mit Glaskonturen im Rumpf schafft einen dynamischen, agilen Eindruck. Durch die optimierte Rumpfform erreicht sie eine höhere Effizienz und bis zu 38 Knoten. Vor Anker bieten ihre großzügigen Decksbereiche Raum für Entspannung, beispielsweise auf den Sitzen und im Sonnenbereich auf dem Vordeck. Unterdessen kann von der großen Garage am Heck schnell ein Beiboot oder Jetski zu Wasser gelassen oder wieder darin verstaut werden. Ihr komfortables Hauptdeck ist achtern mit einer Kombüse mit offenem Essbereich ausgestattet. Schiebetüren mit einem vollständig zu öffnenden Fenster führen zum Cockpit hinaus.







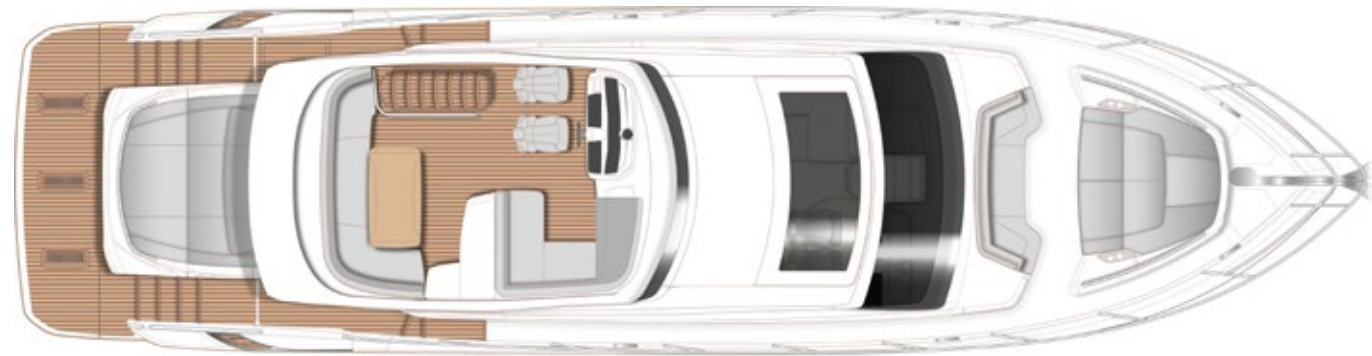
Featuring generous headroom throughout, the S60 is no exception when it comes to Princess' renowned use of space and light. Below deck, six guests are accommodated across an en suite full-beam master stateroom and two further guest cabins. Blending iconic design, exceptional engineering and unrivalled craftsmanship the new S60 provides an unforgettable cruising experience.

Com espaço livre por toda parte, o S60 não é uma exceção quando se trata da reconhecida utilização dos espaços e da luz pela Princess. Abaixo do deck, podem ser acomodados seis convidados em uma cabine principal tipo suite, que ocupa a largura total do iate e em duas cabines adicionais para convidados. Combinando um projeto icônico, engenharia excepcional e técnica de construção incomparável, o novo S60 oferece uma experiência de cruzeiro inesquecível.

Con una generosa altura en todo el barco, el S60 no es una excepción cuando se trata del ya conocido buen uso del espacio y de la luz por parte Princess. Debajo de la cubierta, seis personas se acomodan a través de un camarote doble principal que ocupa toda la manga y de dos camarotes adicionales para invitados. Combinando un diseño icónico con una ingeniería excepcional y una artesanía incomparable, el nuevo S60 proporciona una experiencia de navegación inolvidable.

S60 整个游艇净高度非常充足宽敞，至于公主游艇闻名的空间和光线的设计特点，她自然也毫不例外全部齐备。甲板下面有一个全船宽主卧舱和两个客舱，一共可容纳六人。全新的 S60 将标志性设计、卓越工程和无与伦比的工艺完美融合，为客人提供难以忘怀的巡航体验。

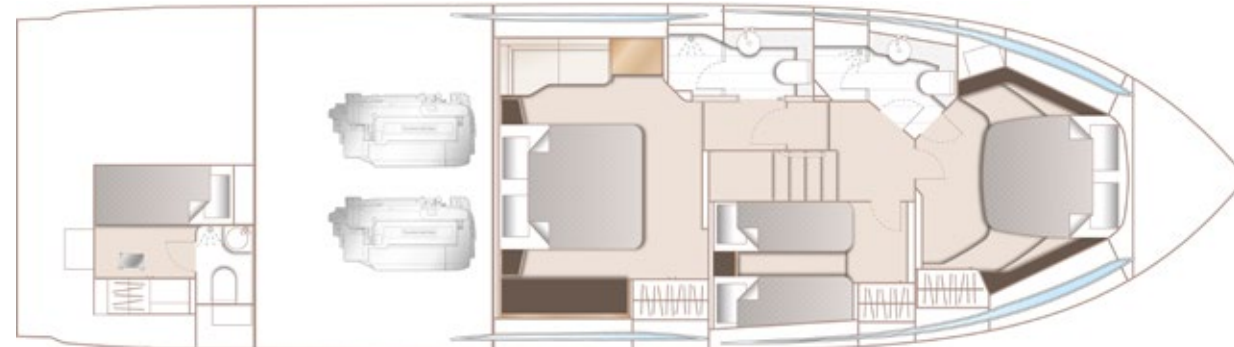
Mit durchgängig viel Kopffreiheit ist die S60 keine Ausnahmerecheinung in der Ausnutzung von Raum und Licht bei Princess. Unter Deck bietet die Yacht in einer die volle Breite einnehmenden Eignerkabine mit eigenem Bad sowie in zwei weiteren Gästekabinen Platz für sechs Gäste. Die neue S60 vereint wegweisendes Design, außergewöhnliche Technik und unerreichte Handwerkskunst für unvergessliche Momente auf dem Wasser.



SPORTBRIDGE



MAIN DECK



LOWER DECK

## PRINCIPAL DIMENSIONS

Length overall (incl. pulpit)	62ft 11in (19.17m)
Length overall (excl. pulpit)	62ft 1in (18.92m)
Beam	16ft 0in (4.87m)
Draft	4ft 9in (1.46m)
Displacement approx.	28,857kg (63,619lbs)*
Fuel capacity	715 gal/858 US gal/3,250l
Water capacity (incl. calorifier)	132 gal/159 US gal/603l

## DECK FITTINGS

- Teak-laid transom platform, cockpit deck, sportbridge, sportbridge stairs and steps to side decks
- Reversible electric anchor winch with foredeck and helm position controls
- Self-stowing 32kg/77lbs Delta anchor with 40m of chain
- Storage lockers for rope, fenders and foredeck sunbed cushions
- Foredeck seating and sunbathing area
- Stainless steel cleats, fairleads and handrails
- LED deck level lighting
- Freshwater deck/anchor wash

## COCKPIT

- U-shaped seating with teak folding table
- Sunbed aft with garage with electro-hydraulic door and tender launch system with electric winch below (3.3m tender)
- Twin transom gates leading to bathing platform with electro-hydraulic raise/lower mechanism, foldaway swimming ladder and hot and cold shower
- Waterproof speakers linked to deck saloon sound system
- Lockable gas strut assisted hatch to engine room, lazarette and optional crew cabin
- Liferaft storage
- Cockpit cover

## SPORTBRIDGE

- Helm position with repeat navigation equipment including radar/chartplotter and engine instrumentation
- Twin adjustable helm seats
- L-shaped seating area with folding teak table
- L-shaped seating to starboard (converts to sunpad)
- Wetbar with sink, top loading coolbox, storage and optional electric barbecue
- Radio/MP3 with waterproof speakers

## LOWER HELM POSITION

- Twin adjustable helm seats
- Electric opening windows at helm position and port side
- Full engine instrumentation including fuel gauges, exhaust temperature, fuel contamination alarms and rudder position indicator

- Navigation system including colour radar, GPS and chartplotter, VHF/RT, speed and distance log, echo sounder with alarm, autopilot and high speed magnetic compass
- Controls for bow thruster, windscreen wipers, bilge pump and trim tabs (with indicators)
- 24v and 240v control panel
- Red night lighting
- Toughened glass screen (clear for night vision)

## DECK SALOON

- Stainless steel framed sliding doors to aft cockpit with integrated opening window aft of galley
- U-shaped sofa with coffee table
- Entertainment centre incorporating 49" UHD LED TV on electric raise/lower mechanism and DVD/radio/MP3 system with surround sound system
- Sideboard unit with bottle and glass storage and refrigerator
- L-shaped dining area with folding table
- Skylights with reflecto-glass and sliding blinds (option of powered opening roof)

## GALLEY

- 4-zone ceramic hob
- Combination microwave/convection oven with grill
- Stainless steel sink with mixer tap
- Full height refrigerator/freezer
- Storage lockers, cupboards and drawers

## ACCOMMODATION

- All cabins feature opening portholes
- All cabins feature 220/240v power points
- All mattresses pocket sprung (excluding optional crew)
- All bathrooms feature full shower stalls, electric freshwater toilets, extractor fan and 240v shaver points

## OWNER'S STATEROOM

- Large double bed with drawers below
- Wardrobes with hanging and drawer storage
- Dressing table
- Sofa
- 40" UHD LED TV, DVD, radio/MP3
- En suite bathroom

## ENGINES

Twin MAN V8-1200 (2 x 1,200mhp)	Speed range: 37-38 knots†
---------------------------------	---------------------------

## FORWARD GUEST CABIN

- Large double bed with drawers below
- Wardrobe with shelves
- Dressing table
- Deck hatch
- Storage lockers
- En suite bathroom

## STARBOARD GUEST CABIN

- Two single beds with drawers below (with the option of powered conversion to double)
- Wardrobe with shelves
- Storage lockers

## CREW CABIN (OPTIONAL)

- Single bed with storage below
- Wardrobe with shelf
- Storage lockers
- Bathroom with shower, electric freshwater toilet and washbasin

## INTERIOR FINISH

- Furniture in Rovere Oak with satin or high gloss finish. Walnut or Alba Oak available as an option
- Solid surface worktops and tiled floors in all guest bathrooms
- Solid surface worktops in galley
- Choice of high quality carpet and upholstery fabric from extensive range
- Curtains, blinds or sunscreens to all windows and portholes
- Timber-laid galley and dining area floors
- Optional crew cabin fitted with non slip safety flooring

## POWER AND DRIVE SYSTEMS

- 5-bladed propellers in nickel aluminium bronze
- Bow thruster (130kgf/287lbf)
- Power-assisted electro-hydraulic steering system with hydraulic back-up
- Electronic engine and gear shift controls
- Dripless shaft seals
- Engine room extractor fan with electronic time delay

## ELECTRICAL SYSTEMS

- 24 Volt:
- 4 x heavy duty batteries for engine starting
- 4 x heavy duty auxiliary batteries
- 60 amp battery charger charges both banks of batteries via an automatic switch charging system

- Remote battery master switches with control switch at main panel
- LED lighting throughout

## 220/240 Volt:

- 11kW diesel generator with own starting battery and specially silenced exhaust
- 50-amp shore support inlet
- Earth leakage safety trip, polarity check system, circuit breakers on all circuits
- Power points in all areas

## FUEL SYSTEM

- Twin fuel tanks (in NS8 marine grade alloy) with interconnection system giving 715 gal/858 US gal/3,250l capacity
- Fuel fillers on port and starboard side decks
- High capacity duplex fuel filters/water traps with audible and visible fuel contamination warning system
- Remote fuel cocks in cockpit locker

## WATER SYSTEM

- 116 gal/159 US gal/530l plus 16 gal/19 US gal/73l hot water calorifier and heated by engines and 240v immersion heater
- Water level gauge
- Deck filler
- Electric freshwater WC system with 55 gal/66 US gal/250l holding tank

## FIRE EXTINGUISHERS

- Automatic/manual override fire extinguishers in engine room with warning system at both helm positions
- Hand-operated fire extinguishers in all cabins, galley and lower helm (5)

## BILGE PUMPS

- Automatic electric bilge pumps (6)
- High-capacity manual bilge pump with valve system and suction points in same areas

## OTHER ITEMS SUPPLIED AS STANDARD

- Ensign staff
- Fenders (6) and wraps (4)
- First aid kit
- Set of manuals
- Quilted bedspreads supplied to all cabins (except optional crew)









[www.boatingfreedom.com](http://www.boatingfreedom.com) | [freedom@boatingfreedom.com](mailto:freedom@boatingfreedom.com)

Vancouver 604.609.0985 | Sidney 250.940.9060 | 中文或粤语 604.235.1000