

V60





V60

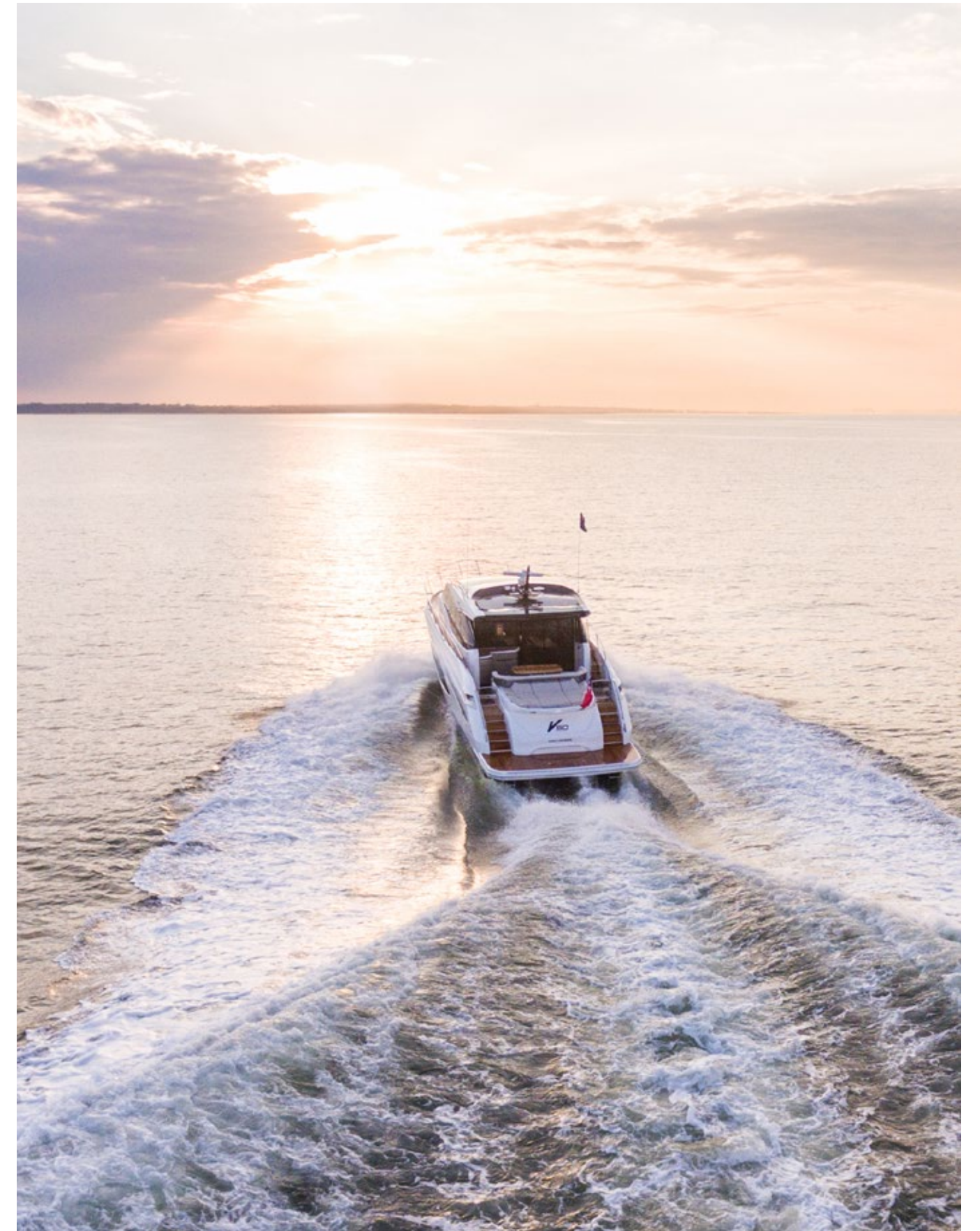
The elegant lines of the all-new V60 encapsulate an expansive and sociable cockpit arrangement with a generous seating area and fully equipped wetbar with barbecue. When at anchor, her electro-hydraulic bathing platform creates a convenient launch system for a 3.3m tender, a jet ski, or simply a secluded swimming platform. With a MAN V8 1200 engine taking you up to 38 knots, she is an altogether adventurous craft.

As linhas elegantes do novíssimo V60 combinam um arranjo do cockpit amplo e que facilita a socialização, com uma área ampla com assentos e um minibar inteiramente equipado com churrasqueira. Quando fundeado, sua plataforma de banho eletro-hidráulica cria um sistema de lançamento conveniente para um tender de 3,3 m, um jet ski ou simplesmente uma plataforma de natação isolada. Com um motor MAN V8 1200 que o leva a até 38 nós, ele é uma embarcação totalmente ousada.

Las elegantes líneas del nuevo V60 encapsulan un diseño de la bañera amplio y sociable, con una generosa zona de asientos y con barra con fregadero totalmente equipada y barbacoa. Cuando está anclado, su plataforma de baño electrohidráulica crea un cómodo sistema de lanzamiento para una auxiliar de 3,3 metros, una moto acuática o simplemente una plataforma de baño aislada. Con un motor MAN V8 1200 que le lleva hasta 38 nudos, es una embarcación totalmente aventurera.

全新 V60 线条优美，后甲板宽阔，布局适合社交活动，有一个大型座位区以及设施齐全的吧台，还可以烧烤。抛锚停泊时，电动液压升降平台可充当一个可供3米长的橡皮艇或水上摩托艇使用的便捷平台，也可单纯作为一个游泳平台。她配备MAN V8 1200发动机，航速可以达到38节，是一艘充满冒险乐趣的游艇。

Die eleganten Linien der völlig neuen V60 bilden den Rahmen für ihr großzügiges und geselliges Cockpit mit reichlich Sitzgelegenheiten sowie eine komplett ausgestattete Bar mit Grill. Vor Anker können ein 3,30 Meter langes Beiboot oder ein Jetski über die elektrohydraulische Badeplattform bequem zu Wasser gelassen werden, die ansonsten auch als ruhig gelegener Schwimmbereich ideal geeignet ist. Gepaart mit einem MAN V8 1200 Motor und einer Höchstgeschwindigkeit von bis zu 38 Knoten ist sie eine rundum abenteuerlustige Yacht.









Forward on her main deck, a retractable sunroof reveals the skies above at the touch of a button. Her sociable galley aft arrangement features an open-plan dining area with sliding doors and a fully opening window leading out to the cockpit. Below deck, six guests are comfortably accommodated across an en suite full-beam owner's stateroom and two further guest cabins with the option of an additional crew cabin aft.

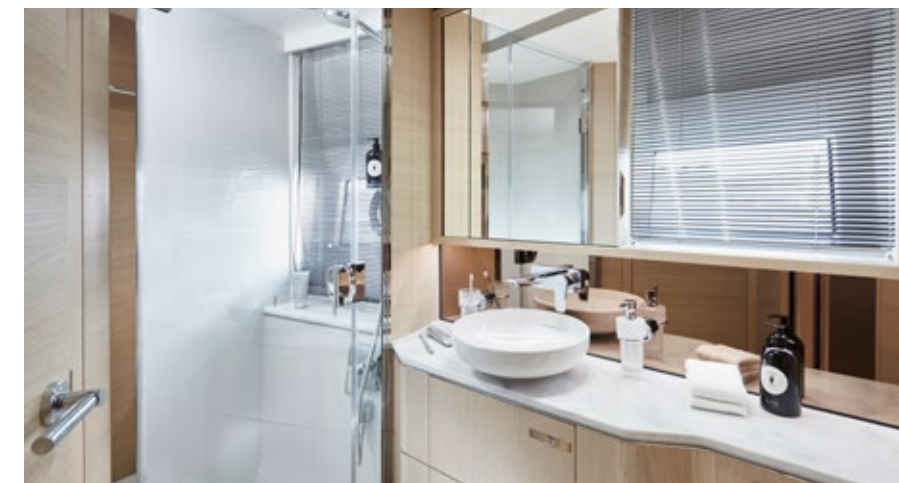
À vante em seu convés principal, teto solar retrátil revela os céus acima com o toque de um botão. O arranjo de popa sociável da cozinha dispõe de uma área de jantar de plano aberto com portas deslizantes e uma janela de abertura total voltada para o cockpit. Abaixo do convés, seis convidados podem ser confortavelmente acomodados em uma cabine do proprietário tipo suite que ocupa a largura total do iate e e mais duas cabines para convidados com a opção de uma cabine adicional para a tripulação à ré.

A proa, en su cubierta principal, un techo corredizo retráctil deja al descubierto el cielo con sólo tocar un botón. Su sociable cocina de popa cuenta con un comedor abierto con puertas correderas y una ventana que se abre por completo a la bañera. Debajo de la cubierta, seis huéspedes se alojan cómodamente en un camarote principal en suite que ocupa toda la manga y dos camarotes de huéspedes más, con la opción de un camarote de tripulación adicional en popa.

主甲板前部配备一个可伸缩天窗，只需轻触按钮，天空即呈现眼前。她的船尾有适合交谊的厨房，设有一个带滑动门的开放式用餐区和一个朝向后甲板的全开窗户。甲板下方可舒适入住六位客人，配备全宽主卧舱和两个客舱，另可配备一个可选船尾船员舱。

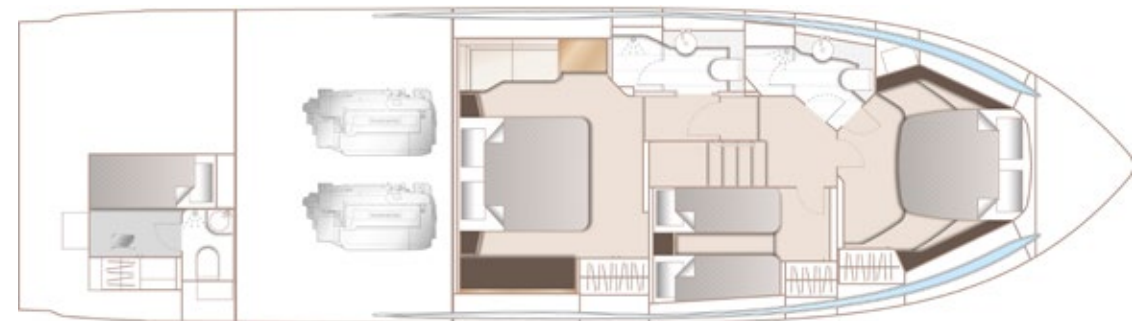
Weiter vorne auf dem Hauptdeck gibt das Schiebedach mit nur einem Knopfdruck den Blick auf den Himmel frei. Das auf Geselligkeit ausgelegte Pantrykonzept achtern verfügt über einen offenen Essbereich mit Schiebetür und einem Scharnierfenster zum Cockpit hin. Unter Deck bietet die V60 ausreichend Platz für sechs Gäste in einer die volle Breite einnehmenden Eignerkabine mit eigenem Bad sowie in zwei weiteren Gästekabinen. Optional kann achtern eine zusätzliche Crewkabine konfiguriert werden.







MAIN DECK



LOWER DECK

PRINCIPAL DIMENSIONS

Length overall (incl. pulpit)	62ft 11in (19.17m)
Length overall (excl. pulpit)	62ft 1in (18.92m)
Beam	16ft 0in (4.87m)
Draft	5ft 0in (1.5m)
Displacement approx.	29,182kg (64,335lbs)*
Fuel capacity	715 gal/858 US gal/3,250l
Water capacity (incl. calorifier)	132 gal/178 US gal/603l

DECK FITTINGS

- Teak-laid transom platform, cockpit deck and steps to side decks
- Reversible electric anchor winch with foredeck and helm position controls
- Self-stowing 40kg/88lbs Delta anchor with 40m of chain
- Storage lockers for fenders and ropes
- Foredeck seating and sunbathing area
- Stainless steel cleats, fairleads and handrails
- LED deck level lighting
- Freshwater deck/anchor wash

COCKPIT

- U-shaped seating with teak folding table and folding directors chairs
- Sunbed aft with garage with electro-hydraulic door and tender launch system with electric winch below (3.3m tender)
- Twin transom gates leading to bathing platform with electro-hydraulic raise/lower mechanism, foldaway swimming ladder and hot and cold shower
- Wetbar including electric barbecue and top loading coolbox
- Waterproof speakers linked to deck saloon sound system
- Lockable gas strut assisted hatches to engine room, lazarette and optional crew cabin
- Liferaft storage locker
- Cockpit cover

HELM POSITION

- Twin helm seats with electric adjustment for helmsman
- Electric opening windows at helm position and port side
- Full engine instrumentation including fuel gauges, exhaust temperature, fuel contamination alarms and rudder position indicator
- Navigation system including colour radar, GPS and chartplotter, VHF/RT, speed and distance log, echo sounder with alarm, autopilot and high speed magnetic compass
- Controls for bow thruster, windscreen wipers, bilge pump and trim tabs (with indicators)
- 24v and 240v control panel
- Red night lighting
- Toughened glass screen (clear for night vision)

DECK SALOON

- Stainless steel framed sliding doors to aft cockpit with integrated opening window aft of galley
- U-shaped sofa and coffee table
- L-shaped dining area with folding table
- Entertainment centre incorporating 49" UHD LED TV on electric raise/lower mechanism and DVD/radio/MP3 system with surround sound system
- Sideboard unit with bottle and glass storage and refrigerator
- Electric opening roof

GALLEY

- 4-zone ceramic hob
- Combination microwave/convection oven with grill
- Stainless steel sink with mixer tap
- Full height refrigerator/freezer
- Storage lockers, cupboards and drawers

ACCOMMODATION

- All cabins and bathrooms feature opening portholes
- All cabins feature 220/240v power points
- All mattresses pocket sprung (optional excluding crew)
- All bathrooms feature electric freshwater toilets, extractor fan and 240v shaver points

OWNER'S STATEROOM

- Large double bed with drawers below
- Wardrobes with hanging and drawer storage
- Storage lockers and drawers
- Dressing table
- Sofa
- 40" UHD LED TV, DVD Bluray, radio/MP3
- En suite bathroom

FORWARD GUEST CABIN

- Large double bed with drawers below
- Wardrobe with shelves
- Dressing table
- Deck hatch
- Storage lockers and drawers
- En suite bathroom with day access

ENGINES

Twin MAN V8-1200 (2 x 1,200hp)	Speed range: 36-38 knots†
--------------------------------	---------------------------

STARBOARD GUEST CABIN

- Two single beds with drawers below (with option of double bed conversion)
- Wardrobe with shelves
- Storage lockers and drawers

CREW CABIN (OPTIONAL)

- Single bed, wardrobe and storage lockers
- Bathroom with shower, electric freshwater toilet and washbasin

INTERIOR FINISH

- Furniture in Rovere Oak with satin or high gloss finish. Walnut or Alba Oak available as an option
- Solid surface worktops and tiled floors in all guest bathrooms
- Solid surface worktops in galley
- Choice of high quality carpet and upholstery fabric from extensive range
- Blinds or sunscreens to all windows and portholes
- Timber-laid galley, saloon and helm floors
- Optional crew cabin fitted with non slip safety flooring

POWER AND DRIVE SYSTEMS

- 5-bladed propellers in nickel aluminium bronze
- Bow thruster (130kgf/287lbf)
- Power-assisted electro-hydraulic steering system with hydraulic back-up
- Electronic engine and gear shift controls
- Dripless shaft seals
- Engine room extractor fan with electronic time delay

ELECTRICAL SYSTEMS

24 Volt:

- 4 x heavy duty batteries for engine starting
- 4 x heavy duty auxiliary batteries
- 60 amp battery charger charges both banks of batteries via an automatic switch charging system
- Remote battery master switches with control switch at main panel
- LED lighting throughout

220/240 Volt:

- 11Kw diesel generator in own starting battery and specially silenced exhaust
- 50-amp shore support inlet
- Earth leakage safety trip, polarity check system, circuit breakers on all circuits
- Power points in all areas

FUEL SYSTEM

- Twin fuel tanks (in NS8 marine grade alloy) with interconnection system giving 715 gal/858 US gal/3,250l capacity
- Fuel fillers on port and starboard side decks
- High capacity duplex fuel filters/water traps with audible and visual fuel contamination warning system
- Remote fuel cocks in cockpit locker

WATER SYSTEM

- 116 gal/159 US gal/530l plus 16 gal/19 US gal/73l hot water calorifier and heated by engines and 240v immersion heater
- Water level gauge
- Deck filler
- Electric freshwater WC system with 55 gal/66 US gal/250l holding tank

FIRE EXTINGUISHERS

- Automatic/manual override fire extinguishers in engine room with warning system at helm position
- Hand-operated fire extinguishers (5) in all cabins, galley and helm position

BILGE PUMPS

- Automatic electric bilge pumps (6)
- High-capacity manual bilge pumps with valve system and suction points in same areas

OTHER ITEMS SUPPLIED AS STANDARD

- Ensign staff
- Fenders (6) and warps (4)
- First aid kit
- Tool kit
- Set of manuals
- Quilted bedspreads supplied to all cabins (except optional crew cabin)



www.boatingfreedom.com | freedom@boatingfreedom.com

Vancouver 604.609.0985 | Sidney 250.940.9060 | 中文或粤语 604.235.1000