

SPECIFICATION

Dehler  **30od**



TECHNICAL DATA

LOA 10.30 m / 33' 10"

HULL LENGTH 9.14 m / 30' 0"

LWL 8.97 m / 29' 5"

BEAM 3.25 m / 10' 8"

AIRDRAFT 14.30 m / 46' 11"

DRAUGHT
T - KEEL 2.20 m / 7' 3"

BALLAST
T - KEEL 0.94 t / 2,072 lbs
WATERBALLAST 0.2 t / 441 lbs

DISPLACEMENT (Mec)
T - KEEL 2.8 t / 6,173 lbs

ENGINE APPROX. Diesel 9.9 PS / hp

FRESH WATER TANK approx. 40 l / 10.57 gal

FUEL TANK approx. 25 l / 6.60 gal

MAIN SAIL 34.50 m² / 371 sq ft

JIB 105% 28.50 m² / 307 sq ft

CODE - 0 45.00 m² / 484 sq ft

GENNAKER A2 95.00 m² / 1,023 sq ft

GENNAKER A5 75.00 m² / 807 sq ft

STAYSAIL 13.50 m² / 145 sq ft

RIG
IG 12.17 m / 39' 11"
J 4.11 m / 13' 6"
P 12.00 m / 39' 4"
E 4.20 m / 13' 9"

CE CERTIFICATE A - 4 / B - 6

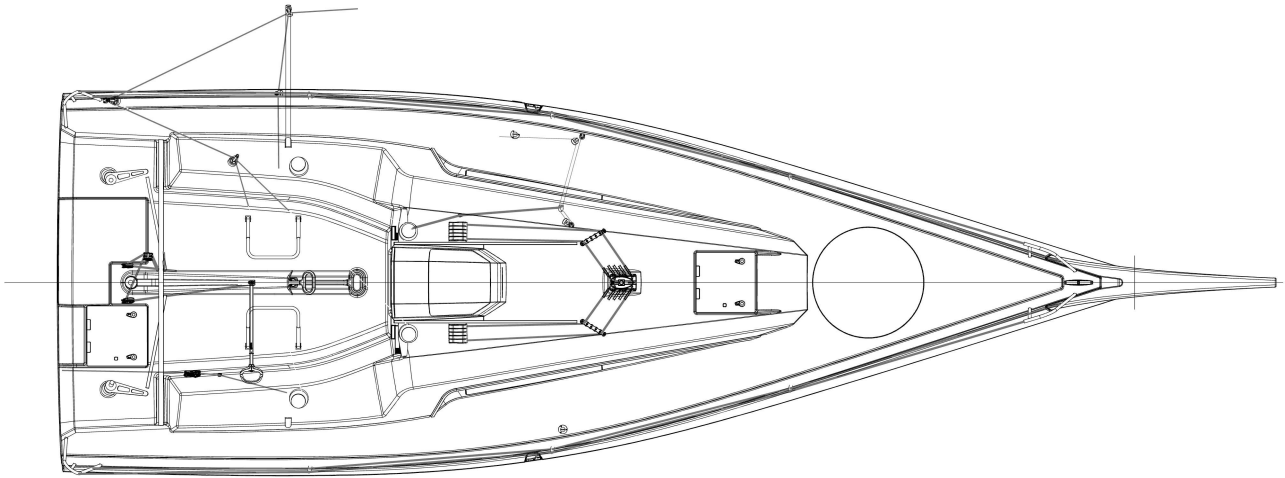
DESIGN judel/vrolijk & co.

INTERIOR judel/vrolijk & co. - Dehler

DEHLER STEALTH DRIVE Bieker Boats

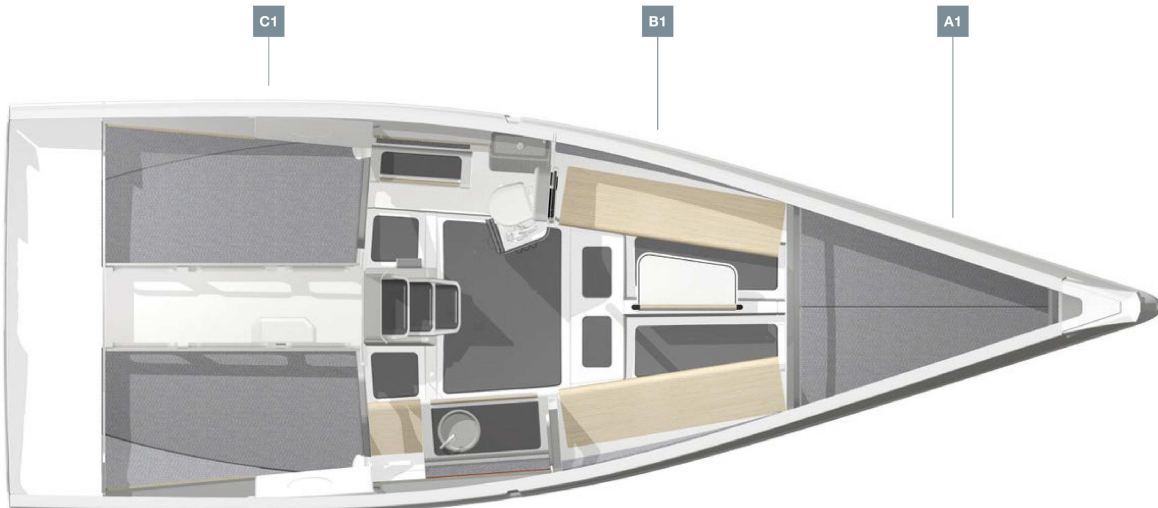
Model year 2020. Valid from 2019.03.29. All measurements/figures are approximate. Errors and omissions excepted. Specification and material can be changed without notice.

DECK LAYOUT



INTERIOR LAYOUT

STANDARD



STANDARD SPECIFICATION

HULL

- GRP hull, built in vacuum infusion with PVC sandwich core and isophthalic gelcoat, colour: Light Grey, 1st layer vinyl ester resin
- High-rigid GRP bottom structure with "Dehler carbon cage"
- Waterline gelcoat, colour: Dehler Red

KEEL

- T-keel in sea-water resistant aluminium, fin with lead bulb, draft: 2.20 m
- GRP twin-rudder with self-aligning bearings

LAYOUT & INTERIOR

- A1: Bow: Double berth, foldable with cushion and stowage, with lightweight fabric hull coverings, "bow crashbox", bulkhead
- B1: Saloon with stowage in seats, could moulded light plywood bench, foldable, mast support stainless steel
- C1: Pantry block on stb with washing basin, tap, 1 flame gas stove and integrated cuttingboard. Wet space with manual toilet and stowage on ps. Aft berth with stowage, both sides, with lightweight fabric hull coverings.
- Interior structure in GRP moulded, gelcoat, colour: Blanc Pur
- D30 one design companionway with functional stairs and engine box
- Saloon table, folding with frosted black aluminium handrail

WOOD (FURNITURE, FLOORBOARD)

- Interior floor covering with antislip surface, saloon bench and handrails in wood (Oak)

UPHOLSTERY, CARPETS & CURTAINS

- Mattresses for all berths (th. 80mm)
- Upholstery bow cabin - Baltic

DECK & OUTSIDE EQUIPMENT

- GRP deck, built in vacuum infusion with PVC sandwich core and isophthalic gelcoat, colour: Light Grey, 1st layer vinyl ester resin
- Tiller steering system on deck with connecting rod and Spinlock tiller extension - Stern locker on stb, central GRP footrest at cockpit bottom, adjustable aluminium footrest for helmsman
- Pulpit and pushpit, lightweight, black frosted - Instrument rack at transom, bathing ladder
- Railing, height: 600 mm, incl. lightweight black frosted stanchions and stainless steel wire
- Halyards and control lines with organizers and jammers on coach roof, retractable mooring cleat
- 2 HARKEN 40.2 STP manual halyard winches
- 2 HARKEN 40.2 STP manual secondary winches
- Life raft storage in aft cockpit ps with cover
- Composite bowsprit with bobstay and padeye for tacklines, isophthalic gelcoat, colour: Light Grey, 1st layer vinyl ester resin

- "3D" genoa barberhauler for jib, adjustable from cockpit
- Mainsheet with purchase system 1:4 / 1:16 transmitted on GRP base with swifel arm at cockpit bottom. Mainsheet traveller at side deck level in aft cockpit
- 1 Lewmar sz. 40 deck hatch on coach roof fwd of mast - flush, openable hatch for life raft box and aft cockpit locker, 1 Lewmar Mitre Sz. 0 portlight each side in cockpit
- 2 Coach roof windows, Dodger sliding hatch with window, halyard bags stb/ps

RIG & SAILS

- Rig, carbon, 1 set of spreaders, deck stepped incl. rod rigging, aluminium boom, 1 main halyard 1:2, 1 jib halyard „9/10“, 2 reefs, 2 manual dyneema backstay in cockpit, manual vang, outhaul, cunningham

NAVIGATION & INSTRUMENTS

- Illuminated compass at companionway
- Navigation lights LED: red/green in pulpit, steaming light at mast, stern light

PROPULSION

- Engine (Diesel, approx. 9.9 hp), Dehler 30 one design 'Stealth Drive' retracting concept, operated from cockpit, 3 blade fixed propeller, 12 V - 70 A Alternator - Fuel tank, transparent, approx. 25 l

EQUIPMENT

- 12 V electric system with main panel, 12 V USB socket
- Battery set - capacity: Starter and service battery: Li-Io 1 x 90 Ah
- LPG gas system, stowage for 1 bottle
- Waterballast, appr. 200 l each side with electric transfer pump (appr. 100 l/min) and valves, overboard discharge
- Manual and electrical bilge pump with control panel
- Blackwater system (appr. 35 l) with deck extraction and seacock for head
- Freshwater system with manual pump
- Freshwater tank, flexible, appr. 40 l

SHIPPING & TRANSPORT

- CE - Certificate cat. A - 4 / B - 6
- Owners manual
- EC - Type Examination Certificate
- One Design Measurement



www.boatingfreedom.com | freedom@boatingfreedom.com
Vancouver 604.609.0985 | Sidney 250.940.9060 | 中文或粵語 604.235.1000