

BRABUS
MARINE



BRABUS SHADOW 900



BRABUS PERFECTION & PASSION

BRABUS has been developing and building high-performance supercars for over 40 years; transforming vehicles of the Mercedes-Benz brand into stylish, unique vehicles – made in Germany. The world-renowned tuner and automaker offers custom solutions for requests of any kind: From upgraded engines and elegantly styled aerodynamic enhancement concepts to expertly forged alloy wheels, as well as agile yet comfortable sport suspension systems and exclusive interior designs at only the highest level of craftsmanship.

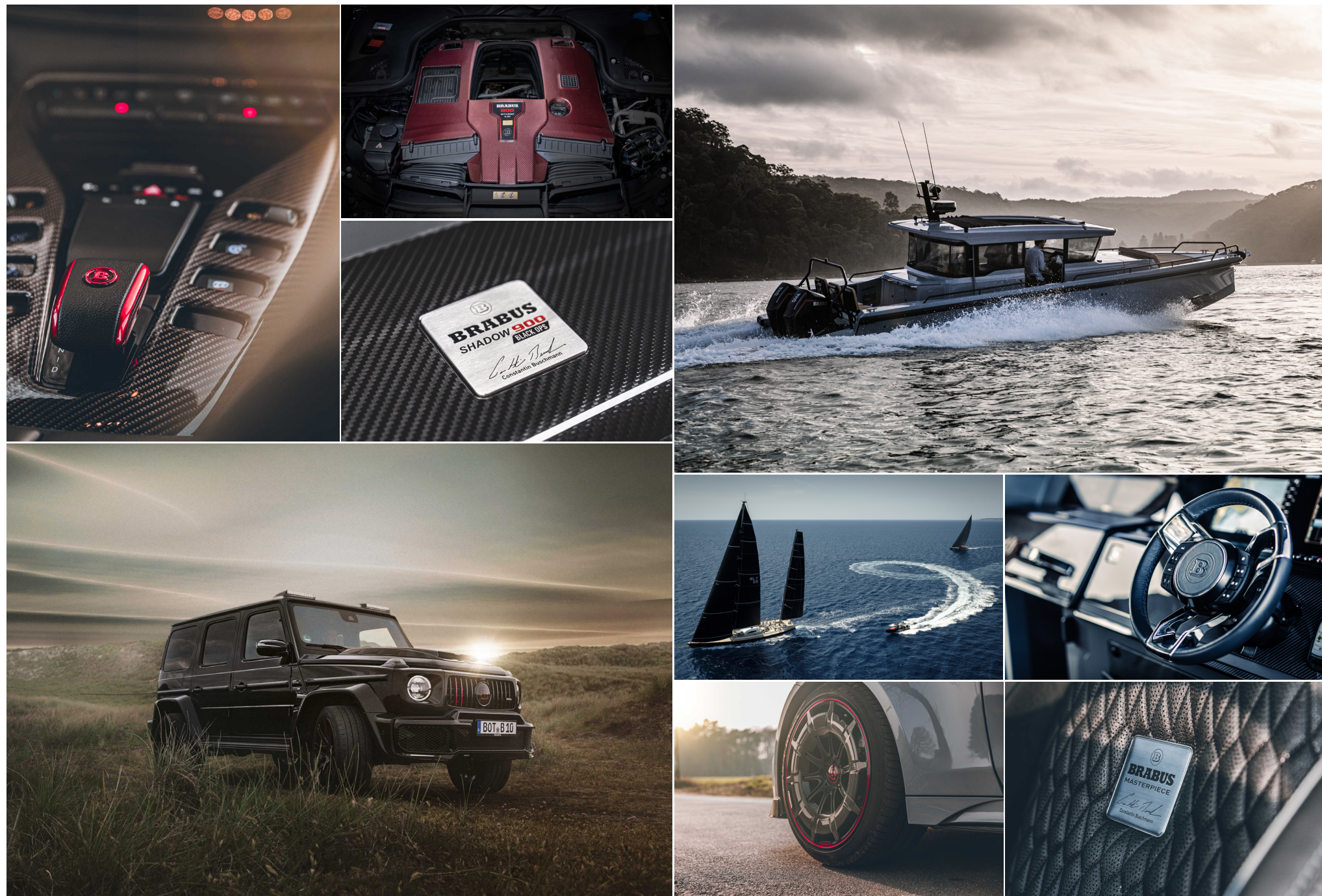
BRABUS
MARINE

REDEFINING
PERFORMANCE DAY BOATING

BRABUS Marine is the result of the cutting-edge alliance between two of the most renowned companies in their respective genres. Bringing together the long-established, high-performance luxury automotive car producer BRABUS and the award-winning Finnish boat builder Axopar Boats, to redefine luxury day boating through a range of ultra-exclusive and exciting powerboats.

BRABUS
MARINE





THE CORE OF BRABUS MARINE

As one of the world’s most iconic boat brands specializing in luxury products for markets around the world, BRABUS Marine focuses on several key principles:

PERFORMANCE – All of our boats are characterized by superior performance courtesy of the latest high-tech engine technology. Through an unwavering commitment to perfection and a pursuit to redefine the superlative, the BRABUS Shadow range offers exceptional in-class power, an unparalleled driving experience and endless “go-anywhere” capabilities.

LUXURY – Our dual-personality design ensures that our performance figures do not come at the expense of on-board luxury. We guarantee sophisticated comfort as well as exclusivity on and below deck designed for a selected group of boat owners who wish to enjoy only the very best boating experience.

FUNCTIONALITY – Beyond the right looks and performance, BRABUS Marine as a brand stands for accessibility, comfortable handling and unmatched drivability. Through a 100 % tech driven development approach, we combine functionality with ease of movement.

BRABUS
MARINE





BRABUS SHADOW 900 XC CROSS CABIN MOTOR BOAT AWARDS WINNER 2022

The Motor Boat Awards are one of the most renowned international boating awards in the industry, held annually since 2007 by Motor Boat & Yachting. An expert jury is thoroughly testing hundreds of boats over months on rigorous sea trials to see how well the boats are meeting the market requirements and demands in relation to size, design and ability, and value for money - taking the boat buyer's interests very closely to heart.

Having the BRABUS Shadow 900 XC Cross Cabin take the win in the category SUV's is a great achievement, underlining the origins of this confident and stylish performer. Fully living and breathing the BRABUS supercar DNA, the BRABUS Shadow 900 truly is the SUV of the sea and the "ultimate user-friendly superboat" with its confident "year-round fast cruising capability, incredible functionality and easy performance", in the words of the judges.

"The BRABUS Shadow 900 XC Cross Cabin is bringing out the best of both worlds, functionality and style of an Axopar fused with the strong presence of luxury, power and performance of a BRABUS product. We are so delighted that the jury has recognized what our close collaboration with the world leading supercar manufacturer is all about"

JAN-ERIK VIITALA

Founding Partner

Axopar Boats / BRABUS Marine

"I believe it is one of our greatest achievements at BRABUS Marine so far and I'm super proud of winning that price. Thank you very much to Motor Boat & Yachting for making us one of the three finalists and choosing us as a winner. [...] An absolutely magnificent boat, one of the best ones we've built so far and there is more to come."

CONSTANTIN BUSCHMANN

CEO

BRABUS GmbH



reddot winner 2020

BRABUS SHADOW 900 THE RED DOT AWARD WINNER 2020

The Red Dot Design Awards reviews the best new products of the year. Red Dot stands for belonging to the best in design and business. **It is recognised as being one of the most prestigious design awards in the world.** Excellent design is selected by competent expert juries in the areas of product design, communication design, and design concepts. The hotly contested Product Design category is where the world's top brands meet to compete.

The **BRABUS Shadow 900 range winning the latest 2020 Red Dot Award in the Product Design Category** is a welcome achievement and accolade for BRABUS Marine. The BRABUS Shadow 900 Sun Top combines an eye-catching, elegant design with technical innovations and high performance.

"Ours is a new way of working within the industry. By utilising our 'shared-platform' thinking, design of the Shadow 900 range is the result of three unique parties, namely, BRABUS, BRABUS Marine and Navia design agency co-contributing and therefore co-designing together."

JAN-ERIK VIITALA

Founding Partner

Axopar Boats / BRABUS Marine

"The international esteem gained from receiving a Red Dot Design Award proves the BRABUS Shadow 900 is an outstanding product, packed with previously unseen innovation, such as the amazing front cabin Gullwing Doors and the clever use of internal and external deck space."

CONSTANTIN BUSCHMANN

CEO

BRABUS GmbH



SIGNATURE EDITION

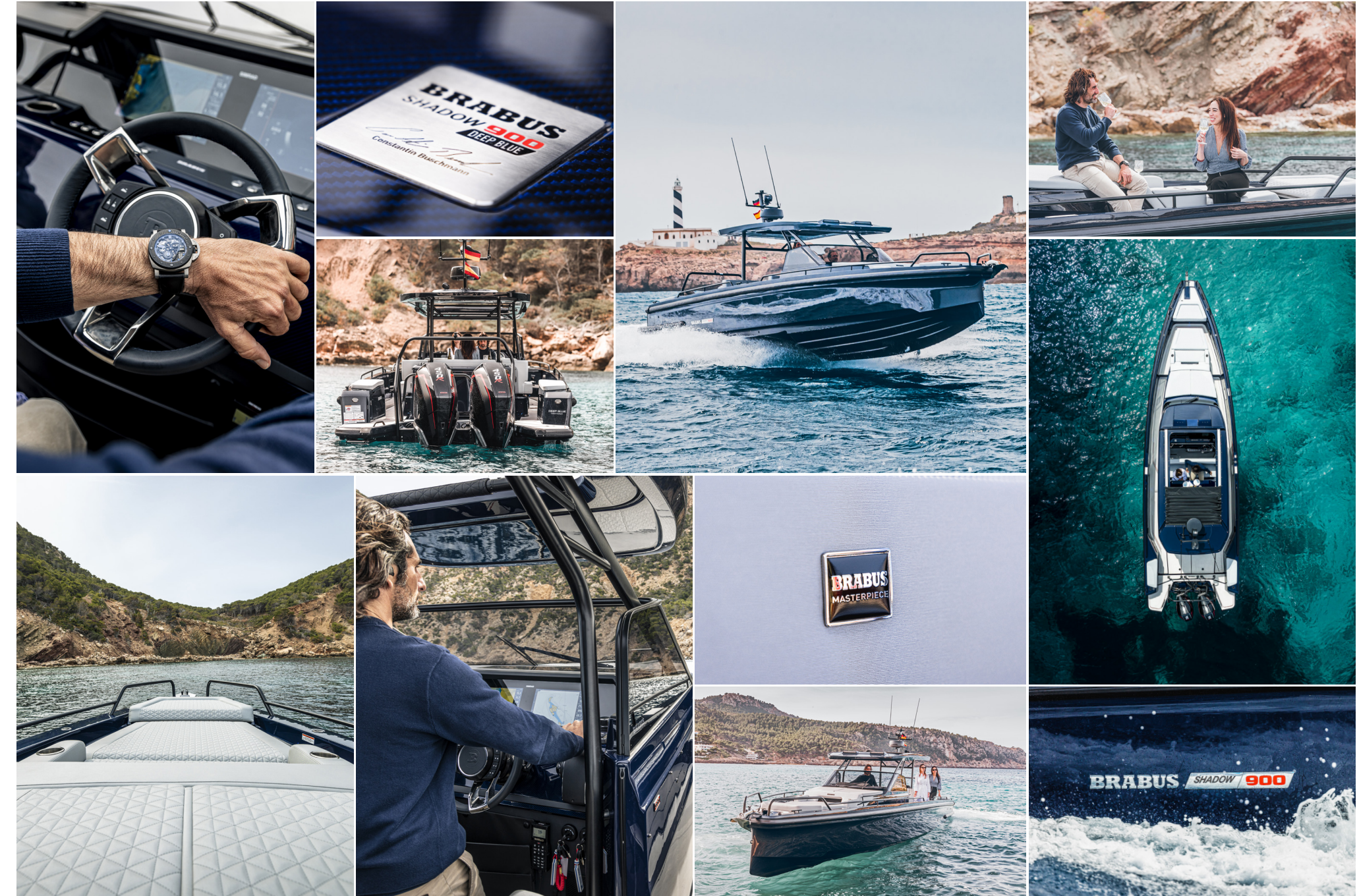


DEEP BLUE

THE BRABUS SHADOW 900 DEEP BLUE SIGNATURE EDITION

Elegant, Exclusive, Timeless - Meet the Heart of the Ocean. Designed specifically for those who seek to experience the magic of confident marine high-performance, the BRABUS Shadow 900 Deep Blue Signature Edition combines hallmark BRABUS go-anywhere power with steady, comfortable handling without compromise.

Following the success of the BRABUS Shadow 900 Black-Ops limited edition, the new and ultra-elegant Deep Blue Signature Edition turns any day on the waves into an unforgettable experience in typical BRABUS fashion. Just like the luxurious BRABUS supercars, the BRABUS Shadow 900 Deep Blue Signature Edition was developed with an extraordinary passion for detail and an unwavering desire to redefine the superlative and meet the signature One-Second-Wow-Factor that characterises all BRABUS vehicles.







SIGNATURE EDITION



BLACK OPS

PICTURE PRESENTED WITH BRABUS SHADOW 900
XC CROSS CABIN BLACK OPS SIGNATURE EDITION



PICTURE PRESENTED WITH PREVIOUS
BRABUS SHADOW 900 XC CROSS CABIN BLACK OPS LIMITED EDITION

THE BRABUS SHADOW 900 BLACK OPS SIGNATURE EDITION

BRABUS Marine's award-winning Shadow 900 Black Ops series is becoming bolder and darker than ever before with the BRABUS Shadow 900 Black Ops Signature Edition. This latest evolution of BRABUS' hallmark design language, attention to detail and next-level performance is guaranteeing to leave spectators in awe.

This Signature Edition is as BRABUS as it gets. With darker and even further brabusized design cues including a dark, unmistakable "BRABUS Graphite Black" paint job, a brand new upholstery color choice in "BRABUS Graphite" as well as Signature Style graphics with red Signature Stripes that run across the entire exterior design concept and are accompanied by sleek hull badges in black chrome.

The edition is hand-built with focus on precision and finish. Just the fairing, painting and polishing of the Limited-Edition version to the quality required is a highly labour-intensive, skilful and painstaking process, with no automation process, that can take up to six weeks alone to reach the required finish. Advanced design engineering and the use of high-tech, selective materials incur a superior level and lengthier period of manufacturing. As a result, every owner of a new Shadow will experience a far higher, superior level of individual touch and performance, uncommon for a boat in this size-range.



THE BRABUS SHADOW 900 BLACK OPS
SIGNATURE EDITION

It is the passion and commitment to performance, the desire for perfection, the pursuit of the superlative, but also a sense for aesthetics and functionality that forms BRABUS Marine superboats.

Scandinavian design meets German engineering.



BRABUS SHADOW 900 SUN-TOP BLACK OPS SIGNATURE EDITION,
WET BAR PACKAGE



BRABUS SHADOW 900 SPYDER BLACK OPS SIGNATURE EDITION,
OPEN AFT DECK OPTION



BRABUS SHADOW 900 XC CROSS CABIN BLACK OPS SIGNATURE EDITION,
AFT-CABIN ACCOMMODATION PACKAGE

SHADOW 900



PICTURE PRESENTED WITH BRABUS SHADOW 900
XC CROSS CABIN IN GLACIER BLUE



PICTURE PRESENTED WITH BRABUS SHADOW 900 SUN-TOP
IN PLATINUM GREY W. "FUSION" CAMO WRAP



BRABUS SHADOW 900 XC CROSS CABIN
IN WHITE GREY W. AFT BENCH

THE BRABUS SHADOW 900 RANGE

The BRABUS Shadow 900 range will allow your creativity to flow with a choice of three chic and contemporary gelcoat colors, several upholstery options, and many optional upgrades to choose from. Discerning owners have now the possibility to create a unique Open, Sun-Top or Cabin boat with awe inspiring performance and drop-dead gorgeous BRABUS looks that will turn heads wherever it appears.

The ultra-cool and head turning 'Fusion Camo-Wrap' livery wrapping with BRABUS® and double® signatures is an ideal choice for that ultimate BRABUS style.



BRABUS SHADOW 900 SUN-TOP
IN PLATINUM GREY W. AFT CABIN



BRABUS SHADOW 900 SPYDER
IN GLACIER BLUE W. OPEN AFT



BRABUS SHADOW 900 XC CROSS CABIN

Utility and luxury come together; this is the ultimate crossover, whether you're seeking out thrills or convenience, the BRABUS Shadow 900 XC Cross Cabin delivers performance at its very heart. Just like a well-designed high-performance 4x4 for the road, the all-weather capable, 'full-enclosed' Shadow 900 XC Cross Cabin could easily be referenced as a luxurious 'Sports Utility Vehicle' made for the sea. A true 'go anywhere' drivers boat delivering optimum comfort and capability.

PICTURE PRESENTED WITH BRABUS SHADOW 900
XC CROSS CABIN IN PLATINUM GREY



THE XC CROSS CABIN MODEL

The distinctive looking BRABUS Shadow 900 XC Cross Cabin is the latest incarnation of this dynamic and highly accomplished 37-foot range of super-boats, following in the footsteps of the incredibly well-received BRABUS Shadow 900 Sun-Top and Spyder.

Endowed with true 'go-anywhere' characteristics, while at the same time offering an extremely convivial environment, with comfortable, raised seating for seven people in the cockpit that effortlessly cossets occupants in the sophisticated luxury and bespoke detailing renowned of a BRABUS.

The clean and ergonomic helm that resembles a supercar more than anything places the driver in the focus. Everything on the dashboard is close to hand, touchscreen technology with selected backlit switches and the exclusive multifunction steering wheel with finger-tip controls, make this one of the most modern looking consoles on the market.







PICTURE PRESENTING BRABUS SHADOW 900 FRONT LOUNGE
W. GULLWING DOORS OPENED





BRABUS SHADOW 900 SUN-TOP

Extravagant, hedonistic and brilliant, welcome the BRABUS Shadow 900 Sun-Top, the comfortable passage maker. Packed with technical innovation and up to 60+ knots blistering performance at heart. It is the perfect companion for those seeking thrills as well as fast and safe passage.



THE SUN-TOP MODEL



The Shadow 900 offers adrenaline-fueled excitement, superior performance, acceleration and torque, providing an ultimate luxurious driving experience. With a bold, confident and authoritative stance, this amazing and dynamic 37ft footer is the perfect partner for you to arrive in style in whatever part of the world you are.

The Shadow 900 range offers class leading driving experience and benefits from Mercury Marine's latest dual 450R Verado XL 4.6 litre V8 FourStroke engines with Joystick Piloting for easy docking and manoeuvring. Flexible cruising speed-range in comfortable 30-40 knots and up to blistering 50 knots cruising speeds for those seeking thrills as well as fast and safe passage.

Better utilization of space includes new multi-storage solutions for adventure gear, a larger foredeck and more versatile social areas, with improved freedom of movement all around the boat. Below deck there's a significant enlarged front lounge, with Gullwing doors and also available with an optional enclosed toilet compartment.





PICTURE PRESENTING BRABUS SHADOW 900 SUN-TOP
IN PLATINUM GREY W. "FUSION" CAMO WRAP



PICTURE PRESENTING BRABUS SHADOW 900 SUN-TOP
IN PLATINUM GREY W. "FUSION" CAMO WRAP





PICTURE PRESENTING BRABUS SHADOW 900 SPYDER
IN PLATINUM GREY W. "FUSION" CAMO WRAP

BRABUS SHADOW 900 SPYDER

The open-air thrill-seekers, built with obsessive attention to details, the Shadow 900 Spyder offers awe inspiring performance and drop-dead BRABUS looks that will turn heads wherever it appears. It is the perfect luxury platform for a day out on the sea.



THE SPYDER MODEL

The Shadow 900 Spyder offers adrenaline-fueled excitement, mesmerizing performance, acceleration and torque, providing an ultimate luxurious driving experience. The Spyder is a first-class superyacht tender, or regatta chase boat, creating the right first impression for clients and VIP's. Only a few boats can match the visual drama and sense of excitement offered by a BRABUS Shadow 900.

Safely transiting passengers from ship-to-shore, whatever the weather, even in arduous sea conditions. The low freeboard means it's easy to step on board and with the optional boarding steps at the stern makes transferring people from boat to boat safe and comfortable.

Swathed in 'sport-pattern', cool grey and black BRABUS Fine Leather® and Dinamica with contrasting red accents and stitching, the front cabin with a 'queen size' sleeping accommodation has a sense of space and luxury more associated with a supremely comfortable lounge. Extend the lounge experience with an optional integrated infotainment unit, comprising a 42-inch flat screen 4K TV and Apple TV connectivity to mention a few of the options available.





PICTURE PRESENTING BRABUS SHADOW 900
BLACK OPS LIMITED EDITION "1 OF 37" HELM CONSOLE



PICTURE PRESENTING BRABUS SHADOW 900
FRONT LOUNGE W. GULLWING DOORS OPEN

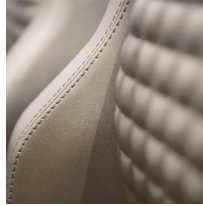
SHADOW 900 CUSTOMIZING OPTIONS

Take pleasure in customizing your boat from a selection of high quality gelcoat colours for your Shadow 900, and let your boat truly express your personality. Choose from our modern and contemporary colours; Platinum Grey, White Grey or Glacier Blue and finish your customization by selecting one of the available vibrant fabric colours; BRABUS Red, BRABUS Cappuccino, BRABUS Sapphire, BRABUS Sunrise or BRABUS Platinum or BRABUS Graphite (only available for Black Ops Signature Edition). Furthermore, for the Shadow 900 XC you can choose between the BRABUS® Fine Leather colour alternatives in the main cabin.

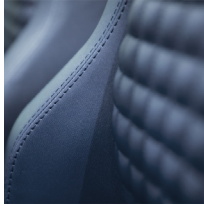
UPHOLSTERY



BRABUS RED



BRABUS CAPPUCCINO



BRABUS SAPPHIRE



BRABUS SUNRISE

UPHOLSTERY INTERIOR (XC)



BRABUS PLATINUM



BRABUS GRAPHITE*



BRABUS FINE LEATHER
BLACK/LIGHT GREY

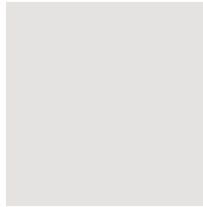


BRABUS FINE LEATHER
LIGHT GREY

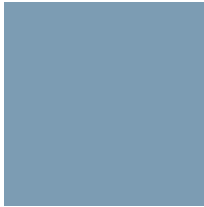
HULL COLOURS



PLATINUM GREY



WHITE GREY



GLACIER BLUE



"FUSION" CAMO WRAP**

* BRABUS Graphite only available for Black Ops Signature Edition

** "Fusion" camouflage wrap can be opted for all hull colours

STANDARD OPEN AFT
PLATINUM GREY



AFT BENCH
WHITE GREY
SAPPHIRE



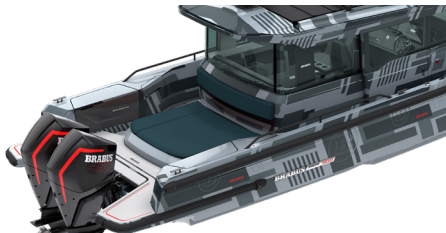
WET BAR
GLACIER BLUE



AFT CABIN
PLATINUM GREY
SUNRISE



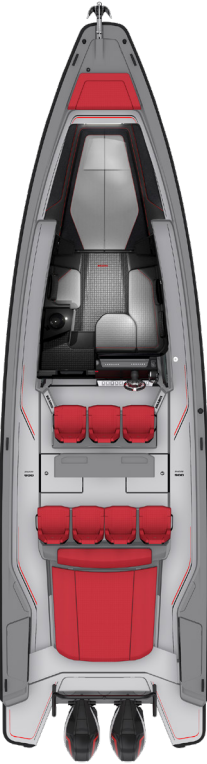
MULTISTORAGE COMPARTMENT
"FUSION" CAMO WRAPPED
SAPPHIRE



BRABUS SHADOW 900 PLAN VIEW



SHADOW 900 SPYDER
STANDARD OPEN AFT



SHADOW 900 SPYDER
MULTI STORAGE



SHADOW 900 SUN-TOP
WET BAR



SHADOW 900 XC CROSS CABIN
AFT CABIN & ENCLOSED TOILET



SHADOW 900 XC CROSS CABIN
AFT CABIN



SHADOW 900 SPECIFICATIONS

SPYDER

Overall Length (incl. Engine)	11.73 m / 38ft 5in
Beam	3.35 m / 9ft 8in
Draft to props	0,85 m / 2ft 9in
Weight (excl. Engine)	4100 kg / 9039 lbs
Fuel Capacity	730 litres / 192 gal
Construction	GRP
Classification	B:10 - C:12
Max. speed range	+60 knots
Outboard engines	2x 450 hp
Hull design	Twin stepped 20 degree V “Sharp entry hull”
Accommodation /Berth*	2 persons (+ 2*)

* BRABUS Aft Cabin option

SUN-TOP

Overall Length (incl. Engine)	11.73 m / 38ft 5in
Beam	3.35 m / 9ft 8in
Draft to props	0,85 m / 2ft 9in
Weight (excl. Engine)	4300 kg / 9480 lbs
Fuel Capacity	730 litres / 192 gal
Construction	GRP
Classification	B:10 - C:12
Max. speed range	+60 knots
Outboard engines	2x 450 hp
Hull design	Twin stepped 20 degree V “Sharp entry hull”
Accommodation /Berth*	2 persons (+ 2*)

* BRABUS Aft Cabin option

XC CROSS CABIN

Overall Length (incl. Engine)	11.73 m / 38ft 5in
Beam	3.35 m / 9ft 8in
Draft to props	0,85 m / 2ft 9in
Weight (excl. Engine)	4500 kg / 9920 lbs
Fuel Capacity	730 litres / 192 gal
Construction	GRP
Classification	B:10 - C:12
Max. speed range	+55 knots
Outboard engines	2x 450 hp
Hull design	Twin stepped 20 degree V “Sharp entry hull”
Accommodation /Berth*	2 persons (+ 2*)

* BRABUS Aft Cabin option

Specifications may be changed without prior notice. Performance may vary due to equipment, weather and load conditions.



BRABUS X JOBE

With our common passion to make something beautiful and adventure spirit, we created the BRABUS x Jobe Shadow collection.

This collection consists out of exclusive high-end water sports products who perfectly match the design aesthetics of the BRABUS Shadow 900. Each and every product out of this collection is designed with the finest details, best tech and a powerful look.

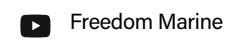
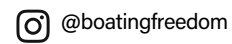
Adventure awaits!

jobesports.com/brabusxjobe





www.boatingfreedom.com | freedom@boatingfreedom.com
Vancouver 604.609.0985 | Sidney 250.940.9060 | 国粤语专线 604.235.1000



WeChat: 扫码联系客服



BRABUS
MARINE

REDEFINING
PERFORMANCE DAY BOATING

brabusmarine.com