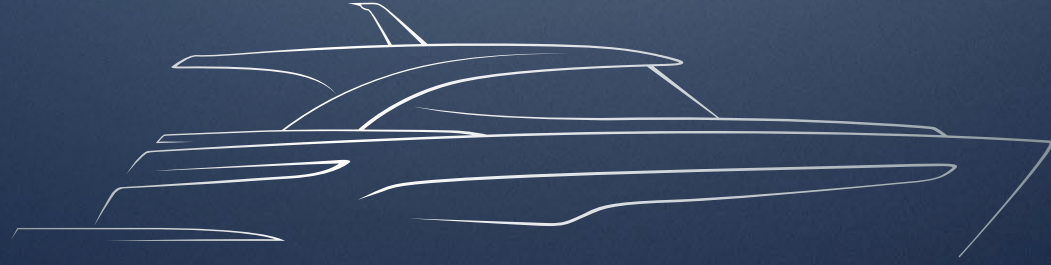


*P L A T I N U M*





*P L A T I N U M*



# RIVIERA'S ULTIMATE SPORT YACHT

The world of luxury motor yachts has a new benchmark. Introducing the 6800 SY, the new flagship of Riviera's stylish and sophisticated Sport Yacht Collection.

The Riviera design team in collaboration with superyacht designer, Luca Vallebona, have created this exceptional craft using an advanced hull design and leading-edge boat building methods.

Effortless performance is an integral part of her DNA, enhanced by a fuel-efficient hull design and impressive power-to-weight ratio, all reflecting Riviera's legendary blue-water heritage.

## RIVIERA SPORT YACHT PLATINUM EDITION

4600 • 5400 • 6000 • 6800



"On behalf of the 950-strong Riviera team, I am proud to introduce our new flagship Sport Yacht, the 6800, created to Riviera's world-renowned standards on Australia's Gold Coast."

A stylized, handwritten signature of Rodney Longhurst in black ink.

Rodney Longhurst  
Owner - Riviera











# ONE BETTER

The design philosophy of Riviera's Sport Yacht Collection embodies four imperatives: timeless styling, luxurious single-level living, effortless blue-water performance and ease of operation.

In this much anticipated 6800 model, Riviera has created the ultimate Sport Yacht; drawing on the innovative thinking of our highly credentialled design team and the valued feedback of Riviera owners from around the world.

There is just so much for your family and friends to enjoy. The ultimate Sport Yacht with all-weather entertaining on the aft deck, easy access to the lounge and sunbeds of the forward deck, a choice of three or four staterooms, with a full-beam master, three ensuite bathrooms, crew cabin or utility room and a tender garage with generous water sports equipment storage.

## PLATINUM EDITION

Platinum Edition means superior appointments and amenity; greater refinement and luxury, gleaming colour palettes and aesthetics guaranteed to stand out in any company.

## THE LUXURY OF SPACE

Riviera's 6800 Sport Yacht has so many separate entertaining areas that family groups, friends and couples to all find their own space to enjoy the world around them. Sunshine or moonlight on the forward deck tends to attract more casual occasions. While the protected aft deck is popular regardless of the weather, when you want to enjoy the sunshine or stars, simply open the sunroof. And there's also a choice to relax on one of three plush lounges in the saloon - also with the option to welcome sunshine or the stars to the saloon with its electric sunroof. This is the luxury of design ingenuity.

## WELCOME ABOARD

As you step aboard the tremendous boarding platform, you'll notice teak steps port and starboard leading up to the aft deck. In between is the tender garage and access door to the engine room leading through to the crew or utility room. Always finding new ways to make boating easier and more enjoyable, the Riviera design team has created an electro-hydraulic swim platform that articulates into steps to be lowered below the water or raised above to match the level of marina or pontoon. And for raised fixed jetties there are wing doors on the aft deck for easy, direct access.

### EASY TENDER LAUNCH AND RETRIEVAL

The descending steps of the swim platform combine with a clever tender cradle and winch system that will gently launch and retrieve your tender.

### HANDY STORAGE FOR WATER SPORTS

Snorkelling, diving, paddleboarding and fishing enthusiasts are well catered for on the 6800 Sport Yacht. Under the hatches of the teak-laid hob are pump-out wet bins able to store two Seabobs or four dive tanks; custom additions include dive compressor and additional dive tank storage. Two paddleboards can be stowed either side of the engine room bulkhead with additional space to rack all your favourite rods and reels. There's also the convenience of an overhead freshwater hot and cold shower and light when the tender garage door is raised.











## OUTSTANDING AFT DECK

This is the entertaining and dining centre of the 6800 Sport Yacht with an extended hardtop providing all-weather protection.

A plush guest lounge extends across the width of the transom; always popular while underway or at anchor. Forward to port is an attractive L-shaped lounge dining area with superbly crafted folding teak table. It offers comfortable seating for eight or more, with storage underneath and four folding occasional chairs standing by. At the press of a button, a breezeway blind lowers from the hardtop to shield the afternoon sun, and tinted glass quarter panels add privacy and weather protection. The aft deck on the 6800 boasts a very capable alfresco entertainer's galley complete with a grill and hotplate, exhaust fan, two drawer fridges, an icemaker, stainless steel sink with mixer and a solid surface benchtop.

An impressive electric sunroof glides open to invite fresh air, the warmth of the sun or the sparkle of the stars. And for those important moments that must be seen live, an LED TV folds down from the hardtop.

Imagine it now. You've found a perfect anchorage in one of the great waterways of the world. It's time to relax. Another day of exploring and adventures shared with those who mean the most. Memories you'll treasure forever in your magnificent 6800 Sport Yacht.





## FABULOUS FORWARD DECK

The wide side decks guide you forward to a spacious entertaining sundeck, so easily accessed from the side door of the saloon. Deep insulated ice bins for refreshments, a sound system for your play list and an expansive outdoor lounge area to relax and entertain with seating for eight. Two supremely comfortable sunbeds take prime position and there is no finer place to stretch out and enjoy the beauty of your surrounds.

When it's time to weigh anchor, the teak trimmed pedestal tables and euro awning quickly stow in a forward locker.











## SPACIOUS SALOON AND GOURMET GALLEY

Slide open the saloon door. Then lower the electric galley window with the push of a button. Both are of the highest quality tinted glass, framed in polished stainless steel. Now the aft deck flows into the saloon creating one grand living and entertaining space.

The U-shaped galley of the 6800 Sport Yacht is an inspiring space, superbly equipped with premium appliances beautifully integrated into handcrafted timber joinery. A three-element induction cooktop with removable potholders is complemented by a combination oven with integrated grill; ample storage, pantry, rangehood, double sink, microwave and dishwasher complete the galley wish list.

Opposite the galley is a full-height refrigerator with two freezer doors below and a fine example of Riviera's renowned craftsmanship; an elegant bar/serving station with double drawer fridge, wine cooler, sink and drinks cabinet for bottles and glassware.

Forward of the galley portside, is a U-shaped lounge upholstered in a choice of leather or premium fabric with matching ottomans. And while most meals will be enjoyed on the aft deck, Riviera's design team has created a masterful alternative featuring a handcrafted solid timber table that easily folds out from the lounge for when additional guests are aboard, or you wish to dine inside.

A matching sofa opposite completes this stylish saloon setting. Lower the window blinds and now the saloon becomes a cinema room with premium sound system and a large LED TV rising at the press of a button. If more seating is required, the companion helm chair turns 180 degrees to accommodate.

In true motor yacht style, the saloon features a very practical starboard door for quick and easy access from the galley to the forward deck; access to the side deck to tend to mooring lines; or simply to invite a cool breeze to flow through the saloon at anchor.



## COMMANDING HELM

Your helm is state-of-the-art, featuring touch screen navigation and operation technology all designed to make your boating even easier and more pleasurable. Total control is at your fingertips and visibility is outstanding through the curved tempered glass windscreen. Captain and companion chairs are fully adjustable and deeply comfortable with the added luxury of hand-stitched leather. Guests can join the skipper while underway and enjoy commanding views from the portside companion lounge.

## ADVANCED SAFETY MONITORING

The 6800 Sport Yacht features an integrated camera system providing skipper and crew with single-glance control through live vision of the bow anchor, swim platform and engine room, displayed through helm navigation screens.

Add another camera to the system to monitor the aft deck. Effortless, easy and intuitive.

## ELECTRIC SUNROOF AND SIDE WINDOWS

Invite a cool breeze whether underway or at anchor; at the touch of a button slide open the saloon sunroof and lower the forward side windows.











## 3 OR 4 STATEROOM DESIGN

Choose the accommodation layout that best suits your boating lifestyle; family living, entertaining, couples cruising or long-range adventures. The 6800 Sport Yacht offers the choice of three or four staterooms, with three ensuite bathrooms and a utility room or crew cabin.

### PALATIAL FULL-BEAM MASTER SUITE

Private and luxurious, your master suite spans the full beam of this magnificent motor yacht. Soft natural light enters from both sides through large, tinted hull windows. At the centre is a king-size walk-around island bed adorned with a striking timber panelled bedhead. A handcrafted, polished timber drawer bureau includes a thoughtful make-up station complete with lift-up mirror, leatherette inlay and ottoman seat. Portside is a sumptuous two-seater lounge upholstered in premium fabric. A bespoke timber entertainment unit with a flush-mounted LED TV provides additional drawer storage and welcomed shelf space. You'll appreciate all the attentive inclusions: the grain-matched timber, bedside tables, full and half-height cedar-lined hanging lockers, port and starboard linen hampers, plush premium carpet, alluring lighting and reverse-cycle air-conditioning.

## LUXE MASTER ENSUITE

This is elegance on a grand scale; an L-shaped vanity with His & Hers basins generously spaced upon a solid surface, waterfall benchtop. The shower is spacious with a teak seat, rain shower head, handheld shower wand and frameless glass door.

Luxury appointments include the twin door half-height, cedar-lined hanging locker with drawer storage below, a heated towel rail, extraction fan, reverse-cycle air-conditioning and tinted hull window with opening porthole.

## MASTER RETREAT

The breakfast bar with a drawer fridge for chilled essentials and power for a coffee machine means you can occasionally indulge that all-important 'me time'. Or the master can become a quiet retreat for when your 6800 becomes an extension of your office.













## GRAND VIP STATEROOM

Bathed in natural light through tinted hull windows, the VIP stateroom is guaranteed to delight your guests. With private entry, private ensuite bathroom, plush carpet, premium fabrics and a walk-around queen-sized bed, the mood is pure luxury. Storage is maximised with a lift-up bed base on gas struts, additional bed-base drawers, port and starboard overhead lockers and His & Hers cedar-lined hanging lockers. A flush-mounted LED TV and sound system is ready to entertain.

### DESIGNER ENSUITE

Beautifully handcrafted vanity cabinet, solid surface benchtop and feature panel, full-sized shower with frameless glass door and teak seat, heated towel rail - even the luxury of a tinted hull window with opening porthole and reverse-cycle air-conditioning. All very VIP.



## TWO STATEROOMS IN ONE

The portside guest stateroom can be two single beds or one double at the touch of a button. Flexible and practical, the inboard single berth slides smoothly across to form a restful double. Comforts include reverse-cycle air-conditioning, bedside cabinet, ample storage, flush-mounted LED TV, premium carpet and cedar-lined hanging locker. The large, tinted hull window with opening porthole adds to the ambiance. Guests enjoy the luxury of a designer ensuite bathroom complete with a full-sized shower, teak seat, frameless glass door and heated towel rail. Two-way entry allows convenient day-head access.

### FOURTH STATEROOM STARBOARD

The starboard guest stateroom also enjoys natural light from the tinted hull window and fresh air at anchor, courtesy of an opening porthole. There are two very comfortable adult-sized single berths overlapping at 90 degrees, with ample storage, reverse-cycle air-conditioning, a bedside table, premium carpet, cedar-lined hanging locker and private entry door. Guests share the ensuite bathroom of the port stateroom via the day-head entry with privacy locks.

When the finest materials meet design excellence, then true luxury is created; and that's what guests will savour onboard your 6800 Sport Yacht.

### COMFY LOWER LOUNGE WITH LED TV

In the three-stateroom design, the starboard guest cabin is replaced by a tempting L-shaped lower lounge complete with LED TV. This becomes the perfect media room to entertain younger children, or perhaps a snug reading space. The lounge also converts to a very accommodating double bed for overnight guests.











## PERSONALISED LAUNDRY, OR CREW CABIN

A popular option for those with large families planning longer range voyages is to use this utility space as a dedicated laundry with a sink, separate washing machine, dryer and plenty of practical bench space for sorting and folding. Your laundry is conveniently located aft of the master stateroom through a sound insulated door.

The Crew Cabin layout features an additional door to enclose the walk-through wardrobe and restrict access to the Master Stateroom.

Riviera's design team has created a comfortable crew retreat with all the essentials including an enclosed wet head with shower wand and toilet, extraction fan, air-conditioning, even an opening porthole. And there's ample storage with overhead cupboards, a cedar lined hanging locker and drawers. A well-equipped laundry is retained with washing machine and dryer located below the single berth.

The lift-up transom door provides private access to the Crew Cabin, passing through the immaculate full height engine room and watertight entry door.









## POWER AND TECHNOLOGY

Today's Volvo Penta IPS offers superior propulsion technology, performance and durability. Riviera has now launched over 1500 IPS powered luxury motor yachts. Pods are used on such worldly vessels as the Queen Mary II cruise ship as well as large scale commercial craft. This technology has revolutionised pleasure boating. Volvo Penta IPS offers an excellent power-to-weight ratio delivering improved performance, enhanced torque, improved fuel efficiency, simple manoeuvrability, reduced environmental impact and quiet operation thanks to underwater exhausts.

In simplified terms, Volvo Penta's innovative Inboard Propulsion System features twin pod drive units, each of which is capable of turning independently to provide the correct thrust to move the yacht in the exact direction required by the skipper easily controlling the system with either a steering wheel and throttles or a joystick.

The 6800 Sport Yacht has three joystick controls: one at the helm and two on her aft deck. IPS also features a Dynamic Positioning System (DPS) integrated with a 24VDC bow thruster for station-holding while preparing lines and fenders or while waiting off a fuel jetty.

A highly efficient Anti-Corrosion Protection (ACP) unit is mounted to the transom to reduce maintenance of sacrificial anodes. For even greater ease of boating with Riviera, the latest smart technology is now available on the 6800 SY.

The Volvo Penta Assisted Docking system is the next generation of marine automation. It simplifies yacht docking and improves your control for manoeuvring in tight spaces to make docking easy in challenging conditions. With the joystick, you control the boat's path and speed, while the system compensates for elements such as wind and current. Push the joystick forward and the system lays out a straight path that the boat follows. At any time, you can release the joystick and your boat will hold on a fixed position.

Volvo Penta Easy Connect gives you an overview of your yacht and engine data, route information and more, by linking your engine, via Bluetooth, to your smartphone or tablet. Easy Connect consists of two parts - the Easy Connect Interface and the Easy Connect app. The app has functions to share your trips and map your position or share diagnostic trouble codes with your dealer via email.

The forward facing, counter rotating, Nibral propellers were specifically developed for IPS D13 engines, with three blades at the front and four blades at the back, to deliver outstanding efficiency and manoeuvrability. Propellers are protected by the premium antifoul coating Prospeed to achieve a long service life. To prevent fouling from fishing lines, plastic bags or nets, 316 marine-grade stainless steel line cutters from Volvo Penta are factory installed behind each propeller. These precision-made line cutters create a very efficient rotating cutting action to protect the seals of propellers and shaft.

Riviera's 6800 Sport Yacht is powered by twin diesel Volvo Penta D13 IPS 1350s rated at 1000 hp (735 kW). This drive package is perfectly matched to the 6800, and the system's Class 5 commercial rating assures reliability and durability. Additionally, the IPS package is fully certified under the Det Norske Veritas and Germanischer Lloyd (DNV GL) classification system

## ENGINEERING PAR EXCELLENCE

Riviera's engineering excellence is respected globally and is clearly evident in the clean and functional engine room of the 6800 SY. The insulation is both acoustic and thermal, complementing an impressive air intake system designed to keep the engine room temperature below the manufacturer's recommendation, reducing fuel consumption even further.

All onboard drains feed into sumps while an advanced mist elimination system with vanes draws moisture from the air and feeds directly overboard. Automatic bilge pumps are located at various points throughout the hull as well as a double action manual bilge pump located in the aft deck. All pump directly overboard.

## SUPERIOR STABILITY

Riviera has chosen the excellent Humphree X900 Interceptor system for the 6800 Sport Yacht. Humphree Interceptors are 25% more efficient than traditional trim tabs with features no other system can match in terms of stabilisation, performance and reliability.



## WINDOW TO THE FUTURE

Volvo Penta's state-of-the-art Glass Cockpit navigation and monitoring system blends new technology with dependability. This practical functionality can be fully optioned on the 6800 Sport Yacht. The Glass Cockpit is easy-to-use technology with enhanced overview and control of both engines and navigation.

GPS, sounder, radar, autopilot and optional charts are all part of the one system. Integrated with IPS Electronic Vessel Control (EVC), the Glass Cockpit gathers all driver information and displays it in one location. The easy-to-handle, pinch-to-zoom displays give you instant data and control.

The ergonomic design and interface for the helm station offers push buttons on the controls and touch-buttons on the screens. Just one clever feature of the Glass Cockpit is the unique auto guidance feature that - based on the yacht's draft and your desired safety distance to obstacles - searches through all relevant charts to create a route you can follow - and avoid shallow water, buoys and other obstacles. Coupled with the autopilot, it not only shows the way, it can take you there.

## LITHIUM IRON PHOSPHATE BATTERIES (LIFEPO4)

Lithium batteries are clearly superior for their depth of discharge, speed of charge, weight, and life cycle when compared to more traditional lead acid or absorbed glass mat (AGM) batteries. And the Lithium Iron Phosphate batteries used by Riviera are the most stable and safest type available; featuring a built-in Battery Management System (BMS) that protects and maximises battery life.

## ADVANCED SWITCHING SIMPLICITY

The fully integrated CZone digital switching system enhances the ease of monitoring and operation of your yacht's onboard systems, including tanks and extends centralised touch screen control to lighting, pumps, batteries, entertainment systems and appliances.

CZone allows owners to operate multiple circuits at a single touch, energising all lighting and electrics depending on your requirements. It comes pre-programmed with three modes — 'Entertaining', 'Cruising' and 'Dock-unattended' — and these modes can be customised. Other user-friendly features include interior light-dimming, timer controls, automated circuit control, wiper speed and wash functions. There's also a 'service' mode that shuts down all power and systems. Based on industry-proven Controller Area Network (CAN) technology, the CZone system offers DC and AC switching and over-current protection.

Comprehensive monitoring (with alarms), including AC voltage, current frequency and kilowatts, DC voltage, current and remaining battery capacity, along with fluid tank levels and indication for systems in operation, are all clearly displayed on the touch screen at the saloon entrance. There's also the option of additional iPad connectivity so you can control CZone from anywhere on board your yacht.

## INNOVATIVE TECHNOLOGY

This includes solar charging system, single-glance helm control through cameras to swim platform, bow anchor and engine room with direct feed to helm navigation screens, Volvo DPS – Dynamic Positioning System. All further enhance the ease and pleasure of boating with Riviera.

## IMPECCABLE PEDIGREE

Every Riviera combines superior-strength lamination with a water-tight collision bulkhead forward and independent compartments throughout the hull. Our legendary build quality also features vinylester resin in the outer layer of lamination to increase the ability to withstand water absorption.

An isophthalic gelcoat exterior provides an impeccable and hard-wearing surface finish.

From the waterline down, the hull is solid GRP (glass-reinforced plastic) with reinforced bottom, keel and chines. Structural core material is used in the hull flanks, main deck and hardtop, while precisely fitted, lightweight infused small parts have a double-sided gelcoat finish and are pre-fitted for a perfect seal when all the major components are bonded together.

Riviera uses only 316 marine-grade stainless steel in all our exterior fastenings. All stainless steel rails feature ground and polished welds to ensure a consistently smooth and mirror finish.

Our designers have placed a significant focus on convenient access to every key maintenance point throughout the yacht so any issues can be quickly identified and addressed – to minimise service costs.

## INDUSTRY LEADING WARRANTIES

We support all our yachts with industry-leading warranties - 2-year express and 7-year structural limited warranty. In addition, with our Volvo Penta powered yachts, we offer a 5-year limited warranty. Life is too short for needless compromise. So, when it comes time to invest in your dream motor yacht, why settle for a lesser option when you can enjoy all that makes up a Riviera.







# 6800 SPORT YACHT SPECIFICATIONS

Length Overall <small>(inc. swim platform and bow sprit)</small>	22.18 m	72' 9"	Sleeping Capacity	8 persons + optional crew	
Hull Length (Lh to ISO8666) *	19.87 m	65' 2"	Cockpit Area	13.80 m²	148.50 ft²
Beam (inc. gunwale)	5.56 m	18' 3"	Bridge Clearance	5.90 m	19' 4"
Maximum Draft (inc. props)	1.65 m	5' 4"	Engines	Volvo Penta D13 IPS 1350 x 2	
Dry Weight ** <small>(approx. depends on engines &amp; options)</small>	35,000 kg	77,162 lb	Volvo Penta D13 IPS 1350 x 2	735 kW	1000 hp each
Fuel Capacity ***	4,500 L	1189 US gal	<small>*Specifications may vary on a regional basis.</small>		
Water Capacity ***	800 L	211 US gal			
Holding Tank Capacity ***	500 L	132 US gal			

## CLARIFICATION AND OUR CARE FOR YOUR INFORMATION

- \* Length of the hull (Lh) to ISO8666: includes all structural and integral parts (i.e. the moulded length of the hull). It excludes parts that can be removed in a non-destructive manner without affecting the structural integrity of the craft (e.g. pulpits, outdrives, diving platforms, rubbing strakes).
- \*\* Dry weight represents the estimated minimum weight of a yacht with standard engines and options, no fuel or water onboard, no equipment or provisions and no personnel. The stated dry weight may be exceeded.
- \*\*\* Denotes net tank capacity. For useable capacity do not rely on more than 90% of tank capacity. Actual capacity will vary according to yacht trim and sea state. Speeds are subject to normal weather conditions, fuel and/or water levels, passengers and equipment loads.

Due to the constant refinement of specifications and design by Riviera Australia, the information in this document may change without notice. Specifications may vary with time and by region. Some images or illustrations in this brochure may include options or custom details. Please note that as safety equipment specifications or standards vary by country, this aspect of your purchase will need to be completed by you and/or your Riviera representative. Please refer to your Riviera representative for specific warranty cover and the latest detailed list of inclusions and options prior to purchase.



HARDTOP



SALOON DECK



SALOON DECK  
Dining table deployed



ACCOMMODATION DECK  
Shown with utility room



ACCOMMODATION DECK  
Shown with optional lower lounge and crew cabin





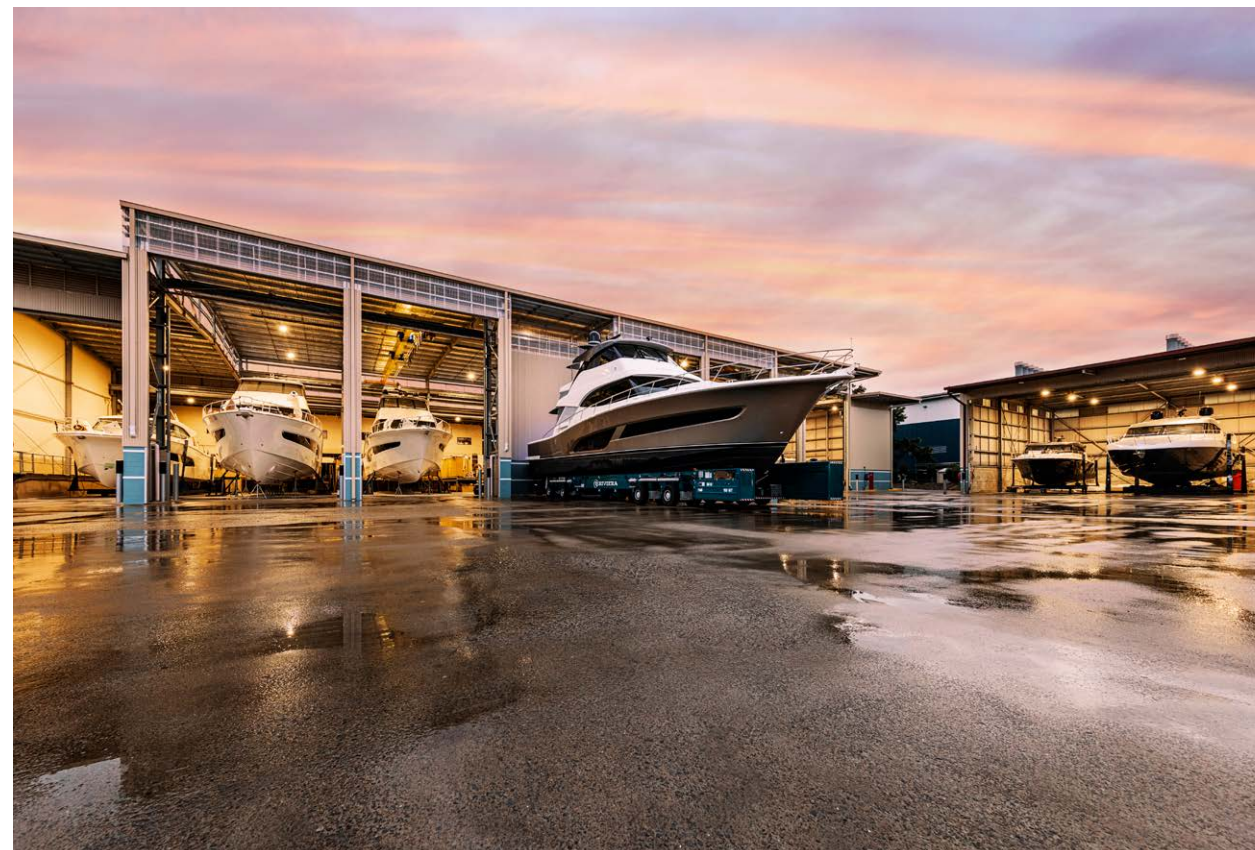


# RIVIERA TODAY

Welcome to the largest luxury yacht building facility in the Southern Hemisphere, our purpose-built, state-of-the-art 16.8-hectare site at Coomera, Gold Coast, Australia. Our proud heritage is a significant advantage with the experience gained over 44 years and the launching of over 6,000 luxury motor yachts. The immense advances seen in Riviera yachts over the past decade are all reflected in handcrafted yachts internationally praised for their peerless quality, materials, structural strength, ease of operation and fine luxury finish.

Safety at sea is paramount and today's Riviera yachts are renowned for their blue-water capability. So too is the passion for excellence shared by our award-winning Riviera team, maintaining a tradition of enduring quality that means your Riviera retains its value.

Today, Riviera builds the most advanced motor yachts ever, exporting around 60% of our annual production to a global dealer network spanning every continent. We design and build luxury motor yachts from 39 to 78 feet in length across five distinct model collections. Owners can choose from the stylish and sophisticated Sport Yachts, the sporty and adventurous SUV series, long-range Sports Motor Yacht designs, the luxurious new Motor Yacht or the classic Belize Motor Yachts. New models designed to inspire. It's all part of a deep-seated culture of customer care which goes beyond after-sales care, support and maintenance. When you acquire a Riviera, you join a family of fellow owners worldwide, sharing adventures and advancing their boating knowledge and experiences in harmony with us.







[RivieraAustralia.com](http://RivieraAustralia.com)





